

Cutting Tool

切削ツール

# モールステーパシャンクセット (標準タイプ)

## MORSE TAPER SHANK SET (Standard)

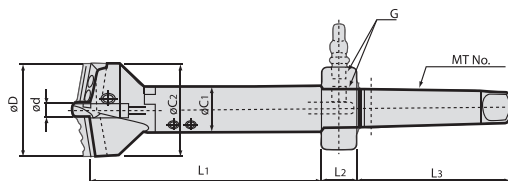
特徴 FEATURES ▶ P51-54 **MT (No.) - (D) MAX - (L)**

標準型ヘッド モールステーパ



セット内容 (A~Dドリル)

- |           |               |      |
|-----------|---------------|------|
| 1.標準ヘッド   | Standard Head | 1個   |
| 2.シャンク    | Shank         | 1個   |
| 3.センタードリル | Center Drill  | 2個   |
| 4.替刃      | Blade         | 2セット |
| 5.オイルプラグ  | Oil Plug      | 1個   |
| 6.レンチ     | Wrench        | 1セット |
- (※E以上のセット内容にはセンタードリル・替刃は含まれておりません)



| MODEL | CODE                    | 加工径øD<br>Hole dia. | 付属替刃<br>Set blade               | ød | L1  | L2 | L3  | øC1 | øC2 | MT No. | G     | N/W<br>(kg) |     |
|-------|-------------------------|--------------------|---------------------------------|----|-----|----|-----|-----|-----|--------|-------|-------------|-----|
| MT4   | -A <sub>1</sub> 55-200S | 54000              | BK50 BK53                       | 20 | 200 | 30 | 130 | 29  | 48  | MT4    | PT1/4 | 2.1         |     |
|       | -A <sub>2</sub> 65-200S | 54001              | BK55 BK60                       |    |     |    |     |     | 53  |        |       | 2.2         |     |
|       | -B 80-200S              | 54002              | BK65 BK73                       |    |     |    |     |     | 35  |        |       | 63          | 2.7 |
|       | -C 100-200S             | 54003              | BK80 BK90                       |    |     |    |     |     | 38  |        |       | 78          | 3.2 |
|       | -D 120-200S             | 54004              | BK100 BK110                     |    |     |    |     |     | 45  |        |       | 98          | 4.3 |
| MT5   | -E 150-200S             | 54005              | 替刃は別売り<br>Blade sold separately | 20 | 200 | 30 | 163 | 55  | 118 | MT5    | PT1/4 | 7.0         |     |
|       | -F 180-200S             | 54006              |                                 |    |     |    |     | 65  | 148 |        |       | 9.4         |     |
|       | -G 210-200S             | 54007              |                                 |    |     |    |     | 75  | 178 |        |       | 12.5        |     |
| MT6   | -H 240-300S             | 54008              | 替刃は別売り<br>Blade sold separately | 20 | 300 | 40 | 228 | 85  | 207 | MT6    | PT3/8 | 23.9        |     |
|       | -I 270-300S             | 54009              |                                 |    |     |    |     | 95  | 237 |        |       | 28.6        |     |

# モールステーパシャンクセット (オイルホールホルダ用)

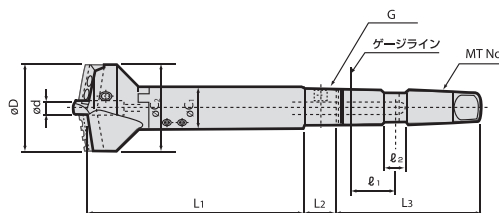
## MORSE TAPER SHANK SET (For Oil-Hole Adapter) **MT (No.) - (D) MAX - (L) - OH**

標準型ヘッド モールステーパ オイルホール



セット内容 (A~Dドリル)

- |           |               |      |
|-----------|---------------|------|
| 1.標準ヘッド   | Standard Head | 1個   |
| 2.シャンク    | Shank         | 1個   |
| 3.センタードリル | Center Drill  | 2個   |
| 4.替刃      | Blade         | 2セット |
| 5.オイルプラグ  | Oil Plug      | 1個   |
| 6.レンチ     | Wrench        | 1セット |



| MODEL | CODE                       | 加工径øD<br>Hole dia. | 付属替刃<br>Set blade | ød | L1  | L2 | L3  | ℓ1 | ℓ2 | C1 | C2 | MT No. | G     | N/W<br>(kg) |     |
|-------|----------------------------|--------------------|-------------------|----|-----|----|-----|----|----|----|----|--------|-------|-------------|-----|
| MT4   | -A <sub>1</sub> 55-200-OHS | 54530              | BK50 BK53         | 12 | 200 | 30 | 130 | 41 | 20 | 29 | 48 | MT4    | PT1/4 | 2.1         |     |
|       | -A <sub>2</sub> 65-200-OHS | 54531              | BK55 BK60         |    |     |    |     |    |    |    | 53 |        |       | 2.2         |     |
|       | -B 80-200-OHS              | 54532              | BK65 BK73         |    |     |    |     |    |    |    | 35 |        |       | 63          | 2.7 |
|       | -C 100-200-OHS             | 54533              | BK80 BK90         |    |     |    |     |    |    |    | 38 |        |       | 78          | 3.2 |
|       | -D 120-200-OHS             | 54534              | BK100 BK110       |    |     |    |     |    |    |    | 45 |        |       | 98          | 4.3 |

# ストレートシャンクセット (標準タイプ)

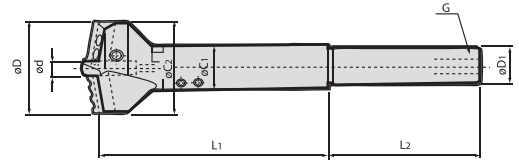
## STRAIGHT SHANK SET (Standard)

ST<sup>Ⓧ</sup>-<sup>Ⓧ</sup>MAX-200

標準型ヘッド ストレートシャンク



- セット内容 (A~Dドリル)**
- |           |               |      |
|-----------|---------------|------|
| 1.標準ヘッド   | Standard Head | 1個   |
| 2.シャンク    | Shank         | 1個   |
| 3.センタードリル | Center Drill  | 2個   |
| 4.替刃      | Blade         | 2セット |
| 5.オイルプラグ  | Oil Plug      | 1個   |
| 6.レンチ     | Wrench        | 1セット |



| MODEL | CODE                     | 加工径øD<br>Hole dia. | 付属替刃<br>Set blade   | ød | L1  | L2  | øC1 | øC2 | øD1 | G     | N/W<br>(kg) |
|-------|--------------------------|--------------------|---------------------|----|-----|-----|-----|-----|-----|-------|-------------|
| ST32  | -A <sub>1S</sub> 55-200S | 54500              | 50~55 BK50 BK53     | 12 | 200 | 130 | 29  | 48  | 32  | PT1/4 |             |
|       | -A <sub>2</sub> 65-200S  | 54501              | 55~65 BK55 BK60     |    |     |     |     | 53  |     |       |             |
|       | -B80-200S                | 54502              | 65~80 BK65 BK73     |    |     |     | 35  | 63  |     |       |             |
|       | -C100-200S               | 54503              | 80~100 BK80 BK90    |    |     |     | 38  | 78  |     |       |             |
|       | -D120-200S               | 54504              | 100~120 BK100 BK110 | 45 | 98  |     |     |     |     |       |             |
| ST42  | -A <sub>1S</sub> 55-200S | 54510              | 50~55 BK50 BK53     | 12 | 200 | 130 | 29  | 48  | 42  | PT1/4 |             |
|       | -A <sub>2</sub> 65-200S  | 54511              | 55~65 BK55 BK60     |    |     |     |     | 53  |     |       |             |
|       | -B80-200S                | 54512              | 65~80 BK65 BK73     |    |     |     | 35  | 63  |     |       |             |
|       | -C100-200S               | 54513              | 80~100 BK80 BK90    |    |     |     | 38  | 78  |     |       |             |
|       | -D120-200S               | 54514              | 100~120 BK100 BK110 | 45 | 98  |     |     |     |     |       |             |

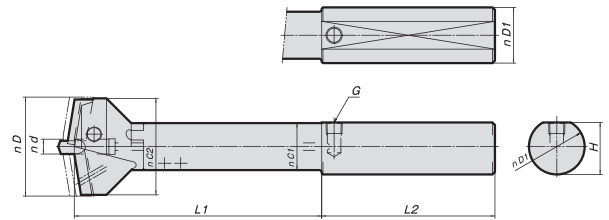
# ストレートシャンクセット (タレット旋盤用)

## STRAIGHT SHANK SET (For Turret Lathe) ST<sup>Ⓧ</sup>-<sup>Ⓧ</sup>MAX-200

標準型ヘッド タレット旋盤用ストレートシャンク



- セット内容 (A~Dドリル)**
- |           |               |      |
|-----------|---------------|------|
| 1.標準ヘッド   | Standard Head | 1個   |
| 2.シャンク    | Shank         | 1個   |
| 3.センタードリル | Center Drill  | 2個   |
| 4.替刃      | Blade         | 2セット |
| 5.オイルプラグ  | Oil Plug      | 1個   |
| 6.レンチ     | Wrench        | 1セット |



| MODEL | CODE                     | 加工径øD<br>Hole dia. | 付属替刃<br>Set blade   | ød | L1  | L2  | C1 | C2 | ød1 | H  | G     | N/W<br>(kg) |
|-------|--------------------------|--------------------|---------------------|----|-----|-----|----|----|-----|----|-------|-------------|
| ST45  | -A <sub>1S</sub> 55-200S | 54550              | 50~55 BK50 BK53     | 12 | 200 | 140 | 29 | 48 | 45  | 42 | PT1/4 |             |
|       | -A <sub>2</sub> 65-200S  | 54551              | 55~65 BK55 BK60     |    |     |     |    | 53 |     |    |       |             |
|       | -B80-200S                | 54552              | 65~80 BK65 BK73     |    |     |     | 35 | 63 |     |    |       |             |
|       | -C100-200S               | 54553              | 80~100 BK80 BK90    |    |     |     | 38 | 78 |     |    |       |             |
|       | -D120-200S               | 54554              | 100~120 BK100 BK110 | 45 | 98  |     |    |    |     |    |       |             |

ご注文例 ORDERING EXAMPLE

① ST45 ② A1S55 - ③ 200

- |           |            |
|-----------|------------|
| ① シャンクサイズ | Shank Size |
| ② Max. øD | Max. øD    |
| ③ L1      | L1         |

Cutting Tool

切削ツール

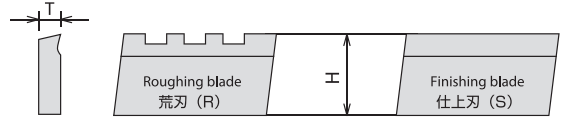
替刃 (標準形ヘッド用) / センタードリル (標準形・平形用)

BLADE (For Standard Head) / CENTER DRILL (For Standard Head · Flat Head)

BK ⊕ MIN/CD

荒刃 (R) と仕上刃 (S) 各1個セット

Each set consists of a roughing blade (R) and a finishing blade (S).



| MODEL | CODE  | Hole dia<br>加工径Dmm | T         | H  | Blade 替刃  | Head<br>適用ヘッドNo. |
|-------|-------|--------------------|-----------|----|-----------|------------------|
| BK50  | 52002 | 50 (50~53)         | 5         | 19 | A19 R&S   | A1 -55           |
| BK51  | 52032 | 51                 |           |    | A19.5 R&S |                  |
| BK52  | 52034 | 52                 |           |    | A20 R&S   |                  |
| BK53  | 52004 | 53 (53~55)         |           |    | A20.5 R&S |                  |
| BK54  | 52036 | 54                 |           |    | A21 R&S   |                  |
| BK55  | 52006 | 55                 |           |    | A21.5 R&S |                  |
| BK55  | 52006 | 55 (55~60)         |           |    | A21.5 R&S |                  |
| BK56  | 52038 | 56                 |           |    | A22 R&S   |                  |
| BK57  | 52040 | 57                 |           |    | A22.5 R&S |                  |
| BK58  | 52042 | 58                 |           |    | A23 R&S   |                  |
| BK59  | 52044 | 59                 |           |    | A23.5 R&S |                  |
| BK60  | 52008 | 60 (60~65)         |           |    | A24 R&S   |                  |
| BK61  | 52046 | 61                 |           |    | A24.5 R&S |                  |
| BK62  | 52048 | 62                 |           |    | A25 R&S   |                  |
| BK63  | 52050 | 63                 |           |    | A25.5 R&S |                  |
| BK64  | 52052 | 64                 |           |    | A26 R&S   |                  |
| BK65  | 52010 | 65                 |           |    | B26.5 R&S |                  |
| BK65  | 52010 | 65 (65~73)         |           |    | B26.5 R&S |                  |
| BK66  | 52054 | 66                 |           |    | B27 R&S   |                  |
| BK67  | 52056 | 67                 |           |    | B27.5 R&S |                  |
| BK68  | 52058 | 68                 |           |    | B28 R&S   |                  |
| BK69  | 52060 | 69                 |           |    | B28.5 R&S |                  |
| BK70  | 52062 | 70                 |           |    | B29 R&S   |                  |
| BK71  | 52064 | 71                 |           |    | B29.5 R&S |                  |
| BK72  | 52066 | 72                 |           |    | B30 R&S   |                  |
| BK73  | 52012 | 73 (73~80)         |           |    | B30.5 R&S |                  |
| BK74  | 52068 | 74                 |           |    | B31 R&S   |                  |
| BK75  | 52070 | 75                 |           |    | B31.5 R&S |                  |
| BK76  | 52072 | 76                 |           |    | B32 R&S   |                  |
| BK77  | 52074 | 77                 |           |    | B32.5 R&S |                  |
| BK78  | 52076 | 78                 |           |    | B33 R&S   |                  |
| BK79  | 52078 | 79                 |           |    | B33.5 R&S |                  |
| BK80  | 52014 | 80                 |           |    | C34 R&S   |                  |
| BK80  | 52014 | 80 (80~90)         |           |    | C34 R&S   |                  |
| BK81  | 52080 | 81                 |           |    | C34.5 R&S |                  |
| BK82  | 52082 | 82                 |           |    | C35 R&S   |                  |
| BK83  | 52084 | 83                 |           |    | C35.5 R&S |                  |
| BK84  | 52086 | 84                 |           |    | C36 R&S   |                  |
| BK85  | 52088 | 85                 |           |    | C36.5 R&S |                  |
| BK86  | 52090 | 86                 |           |    | C37 R&S   |                  |
| BK87  | 52092 | 87                 | C37.5 R&S |    |           |                  |
| BK88  | 52094 | 88                 | C38 R&S   |    |           |                  |
| BK89  | 52096 | 89                 | C38.5 R&S |    |           |                  |
| BK90  | 52016 | 90 (90~100)        | C39 R&S   |    |           |                  |
| BK91  | 52098 | 91                 | C39.5 R&S |    |           |                  |
| BK92  | 52100 | 92                 | C40 R&S   |    |           |                  |
| BK93  | 52102 | 93                 | C40.5 R&S |    |           |                  |
| BK94  | 52104 | 94                 | C41 R&S   |    |           |                  |
| BK95  | 52106 | 95                 | C41.5 R&S |    |           |                  |
| BK96  | 52108 | 96                 | C42 R&S   |    |           |                  |
| BK97  | 52110 | 97                 | C42.5 R&S |    |           |                  |
| BK98  | 52112 | 98                 | C43 R&S   |    |           |                  |
| BK99  | 52114 | 99                 | C43.5 R&S |    |           |                  |
| BK100 | 52018 | 100                | D44 R&S   |    |           |                  |

| MODEL  | CODE  | Hole dia<br>加工径Dmm | T       | H  | Blade 替刃  | Head<br>適用ヘッドNo. |
|--------|-------|--------------------|---------|----|-----------|------------------|
| BK100  | 52018 | 100 (100~110)      | 5       | 19 | D44 R&S   | D-120            |
| BK101  | 52116 | 101                |         |    | D44.5 R&S |                  |
| BK102  | 52118 | 102                |         |    | D45 R&S   |                  |
| BK103  | 52120 | 103                |         |    | D45.5 R&S |                  |
| BK104  | 52122 | 104                |         |    | D46 R&S   |                  |
| BK105  | 52124 | 105                |         |    | D46.5 R&S |                  |
| BK106  | 52126 | 106                |         |    | D47 R&S   |                  |
| BK107  | 52128 | 107                |         |    | D47.5 R&S |                  |
| BK108  | 52130 | 108                |         |    | D48 R&S   |                  |
| BK109  | 52132 | 109                |         |    | D48.5 R&S |                  |
| BK110  | 52020 | 110 (110~120)      |         |    | D49 R&S   |                  |
| BK111  | 52134 | 111                |         |    | D49.5 R&S |                  |
| BK112  | 52136 | 112                |         |    | D50 R&S   |                  |
| BK113  | 52138 | 113                |         |    | D50.5 R&S |                  |
| BK114  | 52140 | 114                |         |    | D51 R&S   |                  |
| BK115  | 52142 | 115                |         |    | D51.5 R&S |                  |
| BK116  | 52144 | 116                |         |    | D52 R&S   |                  |
| BK117  | 52146 | 117                |         |    | D52.5 R&S |                  |
| BK118  | 52148 | 118                |         |    | D53 R&S   |                  |
| BK119  | 52150 | 119                |         |    | D53.5 R&S |                  |
| BK120D | 52152 | 120                | D54 R&S |    |           |                  |
| BK120E | 52154 | 120                |         |    | E-150     |                  |
| BK125  | 52156 | 125                | 8       | 25 |           |                  |
| BK130  | 52158 | 130                |         |    |           |                  |
| BK135  | 52160 | 135                |         |    |           |                  |
| BK140  | 52162 | 140                |         |    |           |                  |
| BK145  | 52164 | 145                |         |    |           |                  |
| BK150E | 52166 | 150                |         |    |           |                  |
| BK150F | 52168 | 150                |         |    |           |                  |
| BK155  | 52170 | 155                |         |    |           |                  |
| BK160  | 52172 | 160                |         |    |           |                  |
| BK165  | 52174 | 165                |         |    |           |                  |
| BK170  | 52176 | 170                |         |    |           |                  |
| BK175  | 52178 | 175                |         |    |           |                  |
| BK180  | 52180 | 180                | 12      | 25 |           |                  |
| BK180  | 52180 | 180                |         |    |           |                  |
| BK190  | 52182 | 190                |         |    |           |                  |
| BK200  | 52184 | 200                |         |    |           |                  |
| BK210  | 52186 | 210                |         |    |           |                  |
| BK210  | 52186 | 210                |         |    |           |                  |
| BK220  | 52188 | 220                |         |    |           |                  |
| BK230  | 52190 | 230                |         |    |           |                  |
| BK240  | 52192 | 240                |         |    |           |                  |
| BK240  | 52192 | 240                |         |    |           |                  |
| BK250  | 52194 | 250                |         |    |           |                  |
| BK260  | 52196 | 260                |         |    |           |                  |
| BK270  | 52198 | 270                |         |    |           |                  |
|        |       |                    |         |    | F-180     |                  |
|        |       |                    |         |    | G-210     |                  |
|        |       |                    |         |    | H-240     |                  |
|        |       |                    |         |    | I-270     |                  |

センタードリル CENTER DRILL

| CODE   | 径 DIA. | Head 適用ヘッドNo.                      |
|--------|--------|------------------------------------|
| CD-12  | 51062  | 12mm A1-55, A2-65, B80, C100, D120 |
| CD-12C | 51061  | 12mm A1-55, A2-65, B80, C100, D120 |
| CD-20  | 51066  | 20mm E150, F180, G210, H240, I270  |

注1: CD-12Cは、コーティングを施したタイプとなります。

2: 替刃につきましても、コーティングタイプがあります。別途お申し付け下さい。

Note 1: CD-12C is a coated type.

2: There is also a coating type for blades. Please tell us separately.

薄板の貫通及び座ぐり専用 For counter sink and metal plate

# モールステーパシャンクセット (平形タイプ)

## MORSE TAPER SHANK SET (Flat Head Type)

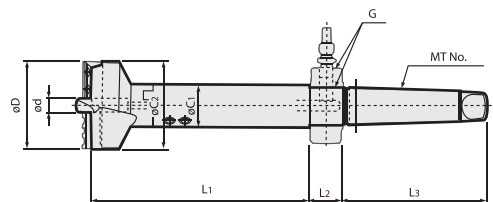
特徴 FEATURES ▶ P51-54 MT(No.)-D MAX-(L1)-FT

Cutting Tool  
切削ツール

平形ヘッド モールステーパ



- セット内容(A~Dドリル)
- |           |              |      |
|-----------|--------------|------|
| 1.平形ヘッド   | Flat Head    | 1個   |
| 2.シャンク    | Shank        | 1個   |
| 3.センタードリル | Center Drill | 2個   |
| 4.替刃      | Blade        | 2セット |
| 5.オイルプラグ  | Oil Plug     | 1個   |
| 6.レンチ     | Wrench       | 1セット |



| MODEL           | CODE             | 加工径 $\phi$ D<br>Hole dia. | 付属替刃<br>Set blade  | $\phi$ d | L1  | L2 | L3  | C1 | C2 | MT No. | G     | N/W<br>(kg) |    |
|-----------------|------------------|---------------------------|--------------------|----------|-----|----|-----|----|----|--------|-------|-------------|----|
| MT4             | -A1s 55-200-FT-S | 54540                     | 50~55 BK50F BK53F  | 12       | 200 | 30 | 130 | 29 | 48 | MT4    | PT1/4 |             |    |
|                 | -A2 65-200-FT-S  | 54541                     | 55~65 BK55F BK60F  |          |     |    |     |    | 53 |        |       |             |    |
|                 | -B 80-200-FT-S   | 54542                     | 65~80 BK65F BK73F  |          |     |    |     |    | 35 |        |       |             | 63 |
|                 | -C 100-200-FT-S  | 54543                     | 80~100 BK80F BK90F |          |     |    |     |    | 38 |        |       |             | 78 |
| -D 120-200-FT-S | 54544            | 100~120 BK100F BK110F     | 45                 | 98       |     |    |     |    |    |        |       |             |    |

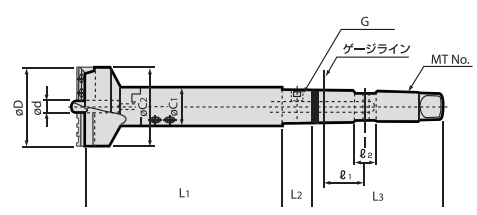
# モールステーパシャンクセット (OHホルダ用・平形ヘッド)

## MORSE TAPER SHANK SET (Flat Head Type For Oil-Hole Adapter) MT(No.)-D MAX-200-FOH

平形ヘッド モールステーパ オイルホイール



- セット内容(A~Dドリル)
- |           |              |      |
|-----------|--------------|------|
| 1.平形ヘッド   | Flat Head    | 1個   |
| 2.シャンク    | Shank        | 1個   |
| 3.センタードリル | Center Drill | 2個   |
| 4.替刃      | Blade        | 2セット |
| 5.オイルプラグ  | Oil Plug     | 1個   |
| 6.レンチ     | Wrench       | 1セット |



| MODEL            | CODE              | 加工径 $\phi$ D<br>Hole dia. | 付属替刃<br>Set blade  | $\phi$ d | L1  | L2 | L3  | $l_1$ | $l_2$ | C1 | C2 | MT No. | G     | N/W<br>(kg) |    |
|------------------|-------------------|---------------------------|--------------------|----------|-----|----|-----|-------|-------|----|----|--------|-------|-------------|----|
| MT4              | -A1s 55-200-FOH-S |                           | 50~55 BK50F BK53F  | 12       | 200 | 30 | 130 | 41    | 20    | 29 | 48 | MT4    | PT1/4 |             |    |
|                  | -A2 65-200-FOH-S  |                           | 55~65 BK55F BK60F  |          |     |    |     |       |       |    | 53 |        |       |             |    |
|                  | -B 80-200-FOH-S   |                           | 65~80 BK65F BK73F  |          |     |    |     |       |       |    | 35 |        |       |             | 63 |
|                  | -C 100-200-FOH-S  |                           | 80~100 BK80F BK90F |          |     |    |     |       |       |    | 38 |        |       |             | 78 |
| -D 120-200-FOH-S |                   | 100~120 BK100F BK110F     | 45                 | 98       |     |    |     |       |       |    |    |        |       |             |    |

Cutting Tool  
切削ツール

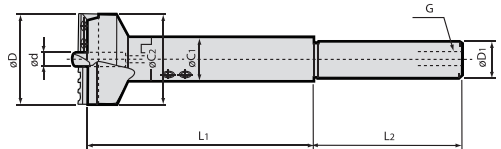
薄板の貫通及び座ぐり専用 For counter sink and metal plate

ストレートシャンクセット (平形ヘッド)  
STRAIGHT SHANK SET (Flat Head Type)  
ST  $\text{\textcircled{D1}}$  -  $\text{\textcircled{D}}$  MAX-200-FT

平形ヘッド ストレートシャンク



- セット内容 (A~Dドリル)
- |            |              |      |
|------------|--------------|------|
| 1. 平形ヘッド   | Flat Head    | 1個   |
| 2. シャンク    | Shank        | 1個   |
| 3. センタードリル | Center Drill | 2個   |
| 4. 替刃      | Blade        | 2セット |
| 5. オイルプラグ  | Oil Plug     | 1個   |
| 6. レンチ     | Wrench       | 1セット |



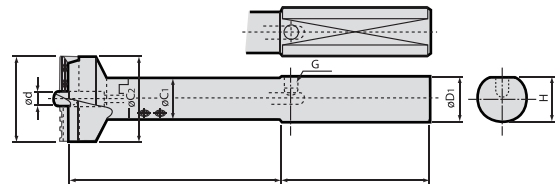
| MODEL | CODE             | 加工径 $\text{\textcircled{D}}$<br>Hole dia. | 付属替刃<br>Set blade | $\text{\textcircled{D}}$ | L1  | L2  | C1 | C2 | $\text{\textcircled{D1}}$ | G     | N/W<br>(kg) |
|-------|------------------|---|-------------------|--------------------------|-----|-----|----|----|---------------------------|-------|-------------|
| ST32  | -A1s 55-200-FT-S | 50~55                                     | BK50F BK53F       | 12                       | 200 | 130 | 29 | 48 | 32                        | PT1/4 |             |
|       | -A2 65-200-FT-S  | 55~65                                     | BK55F BK60F       |                          |     |     | 53 |    |                           |       |             |
|       | -B 80-200-FT-S   | 65~80                                     | BK65F BK73F       |                          |     |     | 35 | 63 |                           |       |             |
|       | -C 100-200-FT-S  | 80~100                                    | BK80F BK90F       |                          |     |     | 38 | 78 |                           |       |             |
|       | -D 120-200-FT-S  | 100~120                                   | BK100F BK110F     |                          |     |     | 45 | 98 |                           |       |             |
| ST42  | -A1s 55-200-FT-S | 50~55                                     | BK50F BK53F       | 12                       | 200 | 130 | 29 | 48 | 42                        | PT1/4 |             |
|       | -A2 65-200-FT-S  | 55~65                                     | BK55F BK60F       |                          |     |     | 53 |    |                           |       |             |
|       | -B 80-200-FT-S   | 65~80                                     | BK65F BK73F       |                          |     |     | 35 | 63 |                           |       |             |
|       | -C 100-200-FT-S  | 80~100                                    | BK80F BK90F       |                          |     |     | 38 | 78 |                           |       |             |
|       | -D 120-200-FT-S  | 100~120                                   | BK100F BK110F     |                          |     |     | 45 | 98 |                           |       |             |

ストレートシャンクセット (タレット旋盤用・平形ヘッド)  
STRAIGHT SHANK SET (Flat Head Type for Turret Lathe) ST  $\text{\textcircled{D1}}$  -  $\text{\textcircled{D}}$  MAX-200

平形ヘッド タレット旋盤用ストレートシャンク



- セット内容 (A~Dドリル)
- |            |              |      |
|------------|--------------|------|
| 1. 平形ヘッド   | Flat Head    | 1個   |
| 2. シャンク    | Shank        | 1個   |
| 3. センタードリル | Center Drill | 2個   |
| 4. 替刃      | Blade        | 2セット |
| 5. オイルプラグ  | Oil Plug     | 1個   |
| 6. レンチ     | Wrench       | 1セット |



| MODEL | CODE             | 加工径 $\text{\textcircled{D}}$<br>Hole dia. | 付属替刃<br>Set blade | $\text{\textcircled{D}}$ | L1  | L2  | C1 | C2 | $\text{\textcircled{D1}}$ | H  | G     | N/W<br>(kg) |
|-------|------------------|---|-------------------|--------------------------|-----|-----|----|----|---------------------------|----|-------|-------------|
| ST45  | -A1s 55-200-FT-S | 50~55                                     | BK50F BK53F       | 12                       | 200 | 140 | 29 | 48 | 45                        | 42 | PT1/4 |             |
|       | -A2 65-200-FT-S  | 55~65                                     | BK55F BK60F       |                          |     |     | 53 |    |                           |    |       |             |
|       | -B 80-200-FT-S   | 65~80                                     | BK65F BK73F       |                          |     |     | 35 | 63 |                           |    |       |             |
|       | -C 100-200-FT-S  | 80~100                                    | BK80F BK90F       |                          |     |     | 38 | 78 |                           |    |       |             |
|       | -D 120-200-FT-S  | 100~120                                   | BK100F BK110F     |                          |     |     | 45 | 98 |                           |    |       |             |

ご注文例 ORDERING EXAMPLE

|   |                               |                               |       |   |   |     |   |    |
|---|-------------------------------|-------------------------------|-------|---|---|-----|---|----|
| ① | ST45                          | ②                             | A1s55 | - | ③ | 200 | ④ | FT |
| ① | シャンクサイズ                       | Shank Size                    |       |   |   |     |   |    |
| ② | Max. $\text{\textcircled{D}}$ | Max. $\text{\textcircled{D}}$ |       |   |   |     |   |    |
| ③ | L1                            | L1                            |       |   |   |     |   |    |
| ④ | 平形ヘッド                         | Flat head type                |       |   |   |     |   |    |

薄板の貫通及び座ぐり専用 For counter sink and metal plate

# 替刃 (平形ヘッド用)

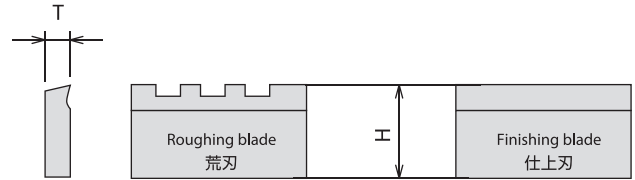
BLADE (For Flat Head)

BK<sup>®</sup>MIN F

Cutting Tool

切削ツール

荒刃 (R) と仕上刃 (S) 各1個セット  
Each set consists of a roughing blade (R) and a finishing blade (S).

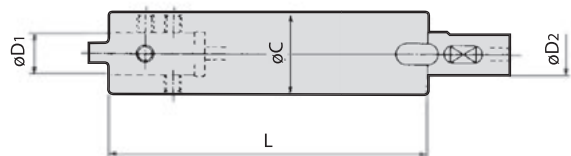


| MODEL | CODE | Hole dia.<br>加工径 $\phi$ Dmm | T             | H | 荒刃&仕上刃<br>R & S | Head<br>適用ヘッドNo. |          |
|-------|------|-----------------------------|---------------|---|-----------------|------------------|----------|
| BK    | 50F  | 52201                       | 50 (50~53)    | 5 | 20              | A19 RF & SF      | A1s-55FT |
|       | 53F  | 52202                       | 53 (53~55)    |   |                 | A20.5RF & F      |          |
|       | 55F  | 52203                       | 55 (55~60)    |   |                 | A21.5RF & SF     | A2-65FT  |
|       | 60F  | 52204                       | 60 (60~65)    |   |                 | A24 RF & SF      |          |
|       | 65F  | 52205                       | 65 (65~73)    |   |                 | B26.5RF & SF     | B- 80FT  |
|       | 73F  | 52206                       | 73 (73~80)    |   |                 | B30.5RF & SF     |          |
|       | 80F  | 52207                       | 80 (80~90)    |   |                 | C34 RF & SF      | C-100FT  |
|       | 90F  | 52208                       | 90 (90~100)   |   |                 | C39 RF & SF      |          |
|       | 100F | 52210                       | 100 (100~110) |   |                 | D44 RF & SF      | D-120FT  |
|       | 110F | 52212                       | 110 (110~120) |   |                 | D49 RF & SF      |          |

## エクステンションアーバ (標準形ヘッド専用)

EXTENSION ARBOR (For Standard Heade) EXT<sup>®</sup>(No.)-L

単品



| MODEL | CODE   | L     | $\phi D1, D2$ | $\phi C$ | HEAD | N/W<br>(kg) |     |
|-------|--------|-------|---------------|----------|------|-------------|-----|
| EXT   | -A-150 | 54151 | 150           | 16       | 29   | A1s55・A265  | 0.8 |
|       | -300   | 54301 | 300           |          |      |             | 1.6 |
|       | -B-150 | 54152 | 150           | 18       | 35   | B 80        | 1.2 |
|       |        | -300  | 54302         |          |      |             | 300 |
|       | -C-150 | 54153 | 150           | 20       | 38   | C100        | 1.4 |
|       |        | -300  | 54303         |          |      |             | 300 |
|       | -D-150 | 54154 | 150           | 22       | 45   | D120        | 1.9 |
|       |        | -300  | 54304         |          |      |             | 300 |
|       | -E-150 | 54155 | 150           | 30       | 55   | E150        | 2.8 |
|       |        | -300  | 54305         |          |      |             | 300 |
|       | -F-150 | 54156 | 150           | 35       | 65   | F180        | 3.9 |
|       |        | -300  | 54306         |          |      |             | 300 |
|       | -G-150 | 54157 | 150           | 40       | 75   | G210        | 5.1 |
|       |        | -300  | 54307         |          |      |             | 300 |
|       | -H-150 | 54158 | 150           | 45       | 85   | H240        | 6.4 |
|       |        | -300  | 54308         |          |      |             | 300 |
|       | -I-150 | 54159 | 150           | 50       | 95   | I 270       | 7.9 |
|       |        | -300  | 54309         |          |      |             | 300 |

ご注文例 ORDERING EXAMPLE

① ② ③  
EXT - A - 150

① 呼称 Name  
② Head type Head type  
③ L L

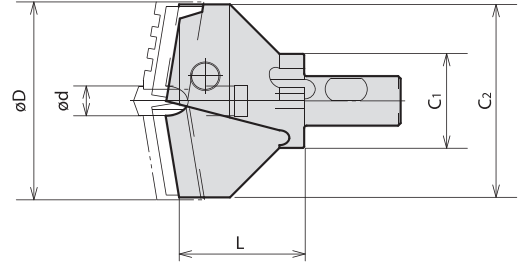
# ニュースーパードリル / 標準形ヘッド単体

## STANDARD HEAD ASS' Y

単品



押え駒付き (替刃とセンタードリルは別売り)  
WITH BLADE CLAMPS  
(Blade and center drill are sold separately.)



| MODEL  | CODE                | 加工径 $\phi D$ Hole dia. |      | $\phi d$ | $\phi C1$ | $\phi C2$ | L    | N/W (kg) |      |
|--------|---------------------|------------------------|------|----------|-----------|-----------|------|----------|------|
|        |                     | MIN.                   | MAX. |          |           |           |      |          |      |
| HD     | -A <sub>1s</sub> 55 | 54020                  | 50   | 55       | 12        | 29        | 48   | 40       | 0.4  |
|        | -A <sub>2</sub> 65  | 54021                  | 55   | 65       |           | 53        | 41.5 | 0.5      |      |
|        | -B 80               | 54022                  | 65   | 80       |           | 35        | 63   | 47       | 0.7  |
|        | -C 100              | 54023                  | 80   | 100      |           | 38        | 78   | 50.5     | 1.0  |
|        | -D 120              | 54024                  | 100  | 120      |           | 45        | 98   | 62       | 1.7  |
|        | -E 150              | 54025                  | 120  | 150      | 20        | 55        | 118  | 55       | 2.6  |
|        | -F 180              | 54026                  | 150  | 180      |           | 65        | 148  | 63.5     | 4.3  |
|        | -G 210              | 54027                  | 180  | 210      |           | 75        | 178  | 75       | 6.7  |
|        | -H 240              | 54028                  | 210  | 240      |           | 85        | 207  | 75.5     | 10.0 |
| -I 270 | 54029               | 240                    | 270  | 95       | 237       | 76        | 11.8 |          |      |

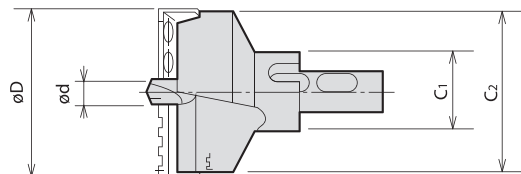
# ニュースーパードリル / 平形ヘッド単体

## FLAT HEAD ASS' Y

単品



押え駒付き (替刃とセンタードリルは別売り)  
WITH BLADE CLAMPS  
(Blade and center drill are sold separately.)



| MODEL | CODE                  | 加工径 $\phi D$ Hole dia. |      | $\phi d$ | $\phi C1$ | $\phi C2$ | L  | N/W (kg) |     |
|-------|-----------------------|------------------------|------|----------|-----------|-----------|----|----------|-----|
|       |                       | MIN.                   | MAX. |          |           |           |    |          |     |
| HD    | -A <sub>1s</sub> 55FT | 54030                  | 50   | 55       | 12        | 29        | 48 | 43       | 0.4 |
|       | -A <sub>2</sub> 65FT  | 54031                  | 55   | 65       |           |           | 53 | 45       | 0.5 |
|       | -B 80FT               | 54032                  | 65   | 80       |           | 35        | 63 | 51       | 0.7 |
|       | -C 100FT              | 54033                  | 80   | 100      |           | 38        | 78 | 56       | 1.0 |
|       | -D 120FT              | 54034                  | 100  | 120      |           | 45        | 98 | 69       | 1.7 |

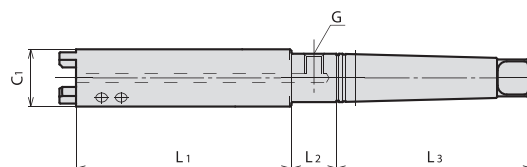
# モールステーパシャンク単体

MT DRILL ARBOR

Cutting  
Tool

切削ツール

単品

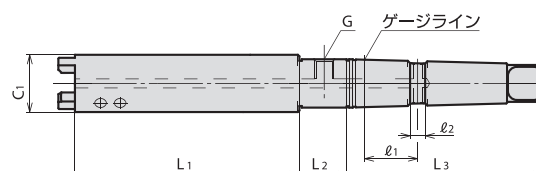


| MODEL     | CODE  | MT No. | C1 | L1  | L2 | L3  | G     | DRILL HEAD | N/W (kg) |
|-----------|-------|--------|----|-----|----|-----|-------|------------|----------|
| MT4-A-200 | 54041 | MT4    | 29 | 157 | 30 | 130 | PT1/4 | A1-55      | 1.4      |
| MT4-B-200 | 54042 |        | 35 | 150 |    |     |       | B80        |          |
| MT4-C-200 | 54043 |        | 38 | 144 |    |     |       | C100       |          |
| MT4-D-200 | 54044 |        | 45 | 131 |    |     |       | D120       |          |
| MT5-E-200 | 54055 | MT5    | 55 | 137 | 40 | 163 | PT3/8 | E150       | 3.8      |
| MT5-F-200 | 54056 |        | 65 | 126 |    |     |       | F180       |          |
| MT5-G-200 | 54057 |        | 75 | 112 |    |     |       | G210       |          |
| MT6-H-300 | 54068 | MT6    | 85 | 300 | 40 | 228 | PT3/8 | H240       | 7.8      |
| MT6-I-300 | 54069 |        | 95 |     |    |     |       | I270       |          |

# OHモールステーパシャンク単体

OH MT DRILL ARBOR

単品



| MODEL        | CODE  | MT No. | C1 | L1  | L2 | L3  | l1 | l2 | G     | DRILL HEAD | N/W (kg) |
|--------------|-------|--------|----|-----|----|-----|----|----|-------|------------|----------|
| MT4-A-200-OH | 54141 | MT4    | 29 | 157 | 30 | 130 | 41 | 20 | PT1/4 | A1-55      | 1.4      |
| MT4-B-200-OH | 54142 |        | 35 | 150 |    |     |    |    |       | B80        |          |
| MT4-C-200-OH | 54143 |        | 38 | 144 |    |     |    |    |       | C100       |          |
| MT4-D-200-OH | 54144 |        | 45 | 131 |    |     |    |    |       | D120       |          |



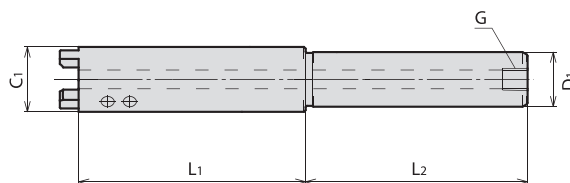
# Cutting Tool

切削ツール

## ストレートシャンク単体

### ST DRILL ARBOR

単品

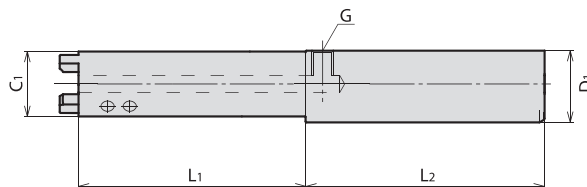


| MODEL | CODE   | D1    | C1 | L1 | L2  | G     | DRILL HEAD | N/W (kg) |
|-------|--------|-------|----|----|-----|-------|------------|----------|
| ST32  | -A-200 | 54321 | 32 | 29 | 157 | PT1/4 | A1-55      | 1.6      |
|       | -B-200 | 54322 |    | 35 | 150 |       | A2-65      |          |
|       | -C-200 | 54323 |    | 38 | 144 |       | B80        |          |
|       | -D-200 | 54324 |    | 45 | 131 |       | C100       |          |
| ST42  | -A-200 | 54421 | 42 | 29 | 157 | PT3/8 | A1-55      | 1.8      |
|       | -B-200 | 54422 |    | 35 | 150 |       | A2-65      |          |
|       | -C-200 | 54423 |    | 38 | 144 |       | B80        |          |
|       | -D-200 | 54424 |    | 45 | 131 |       | C100       |          |
|       |        |       |    |    |     |       | D120       | 2.7      |
|       |        |       |    |    |     |       | D120       | 2.9      |

## ストレートシャンク単体 (タレット旋盤用)

### ST DRILL ARBOR (FOR LATHE)

単品



| MODEL | CODE   | D1    | C1 | L1 | L2  | G     | DRILL HEAD | N/W (kg) |
|-------|--------|-------|----|----|-----|-------|------------|----------|
| ST45  | -A-200 | 54451 | 45 | 29 | 157 | PT1/4 | A1-55      | 1.9      |
|       | -B-200 | 54452 |    | 35 | 150 |       | A2-65      |          |
|       | -C-200 | 54453 |    | 38 | 144 |       | B80        |          |
|       | -D-200 | 54454 |    | 45 | 131 |       | C100       |          |
|       |        |       |    |    |     |       | D120       | 2.3      |
|       |        |       |    |    |     |       | D120       | 2.4      |
|       |        |       |    |    |     |       | D120       | 3.0      |

## オイルリング

### OIL RING

単品



オイルリングセット :  
オイルリング 1個  
ストッパー 1個

Coolant ring set :  
Coolant ring 1pc  
Stopper 1pc

※オイルプラグは、セットに含まれておりません。  
\* Oil plug is sold separately.

| MODEL | CODE | 内径 ID(mm) | オイルプラグ Oil Plug |
|-------|------|-----------|-----------------|
| CR    | -MT4 | 51022     | PT1/4           |
|       | -MT5 | 51024     |                 |
|       | -MT6 | 51026     | PT3/8           |

オイルプラグ単体

| MODEL | CODE | オイルリング Coolant Ring |
|-------|------|---------------------|
| PT    | 1/4  | 51054               |
|       | 3/8  | 51056               |

ラジアルボール盤などで使用の場合に、内部給油用として使用します。  
Oil ring is used supply coolant through the drill in rotational applications.

# 超硬ガイド (貫通穴加工用 (標準形ヘッド専用))

## T/C GUIDE (For Through Hole with Standard Head)

Cutting  
Tool  
切削ツール



2個セット 2pc/set

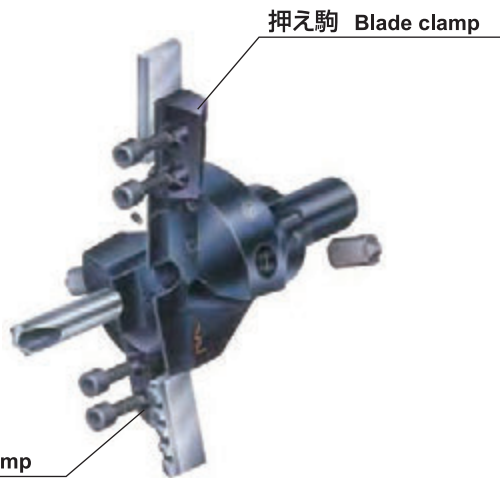
| MODEL | CODE   | 適用ヘッド<br>HEAD | レンチ<br>WRENCH      |
|-------|--------|---------------|--------------------|
| DG    | -B80-S | 51031         | B-80 (φ65-φ73)     |
|       | -B80-L | 51034         | B-80 (φ73-φ80)     |
|       | -C/D   | 51036         | C-100/D-120        |
|       | -E/F   | 51038         | E-150/F-180        |
|       | -G/H/I | 51040         | G-210/H-240/I-270  |
|       |        |               | レンチなし<br>No wrench |
|       |        |               | レンチ付<br>w/wrench   |

超硬ガイドを取付けると、貫通穴加工時の貫通直前の横振れを最小限に抑えることが出来ます。

T/C guides will minimize vibration when drill goes through the other end.

# スペアー押え駒

## SPARE BLADE CLAMP



押え駒 Blade clamp

押え駒 Blade clamp

2個セット (ネジ付き)  
2 pc set with screws

### 標準ヘッド用 FOR STANDARD HEAD

| MODEL  | CODE               |       |
|--------|--------------------|-------|
| BC     | -A <sub>1</sub> 55 | 51003 |
|        | -A <sub>2</sub> 65 | 51004 |
|        | -B 80              | 51006 |
|        | -C 100             | 51008 |
|        | -D 120             | 51010 |
|        | -E 150             | 51012 |
|        | -F 180             | 51014 |
|        | -G210              | 51016 |
|        | -H240              | 51018 |
| -I 270 | 51020              |       |

### 平型ヘッド用 FOR FLAT HEAD

| MODEL | CODE                 |       |
|-------|----------------------|-------|
| BC    | -A <sub>1</sub> 55FT | 51045 |
|       | -A <sub>2</sub> 65FT | 51046 |
|       | -B 80FT              | 51047 |
|       | -C 100FT             | 51048 |
|       | -D 120FT             | 51049 |

# 替刃研磨用治具

## RE-GRINDING FIXTURE



| MODEL | CODE | HOLE DIA |
|-------|------|----------|
| SBG   | -200 | 51044    |
|       |      | 50~270   |