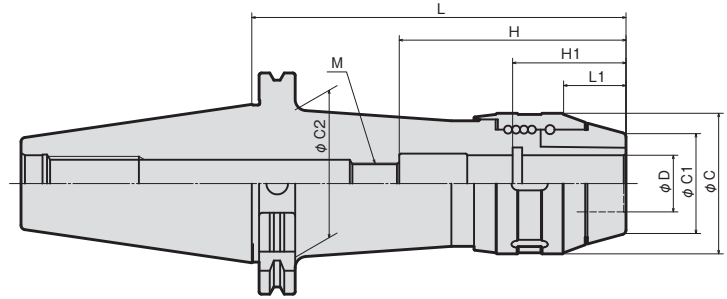
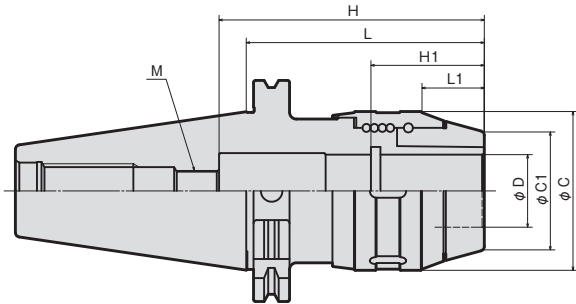


- ▶▶ Thru-the-tool Coolant Available
- ▶▶ Thru-the-groove Coolant Available



MODEL	A	AA	FIG	φD	L	H	φC	φC1	φC2	L1	H2	M	N/W(kg)	
Max 10,000mim ⁻¹														
SK30	HPC16-105	○	○	1	16	105	85	56	34	-	26	50	M10	1.4
	HPC20-105	○	○	1	20				38					1.3
Max 10,000mim ⁻¹														
SK40	HPC16-105	○	○	1	16	105	85	56	34	-	26	50	M10	1.8
	HPC20-105	○	○		20									38
	HPC25-105	○	○		25	135	100	62	44	-	27.5	53	M18	2.0
	HPC25-135	○	○		25									2.5
	HPC32-105	○	○		32	105	117	70	52	-	27.5	53	M18	2.2
	HPC32-135	○	○		32	135								2.5
Max 8,000mim ⁻¹														
SK50	HPC16-105	○	○	1	16	105	85	56	34	-	26	50	M10	4.4
	HPC20-105	○	○		20				38					4.3
	HPC20-135	○	○	2	135	105	100	62	44	-	27.5	50	M10	4.7
	HPC25-105	○	○	1	105									4.4
	HPC25-135	○	○	2	135	105	100	62	44	-	27.5	50	M10	4.8
	HPC25-165	○	○		165									5.7
	HPC32-105	○	○	1	105	117	70	52	-	27.5	35	M18	4.4	
	HPC32-135	○	○		135								5.0	
	HPC32-165	○	○	2	165	110	122	82	62	-	30.5	57	M18	5.6
	HPC42-110	○	○	1	110									4.6
	HPC42-135	○	○	1	135	122	82	62	-	30.5	57	M18	5.3	
	HPC42-165	○	○		165								6.2	

Note1: Chuck wrench and adjust screw are sold separately.

Note2: Insert the O-ring included the box to the groove of the ID for thru-the-tool application.

ORDERING EXAMPLE

① ② ③ ④ ⑤

SK50 - HPC 16 - 100 A

- ① Shank Size
- ② Holder's Name
- ③ Cutter's Shank Dia.
- ④ G.L. Length
- ⑤ Grade

ACCESSORIES

P.39 STRAIGHT COLLETS

ACCESSORIES

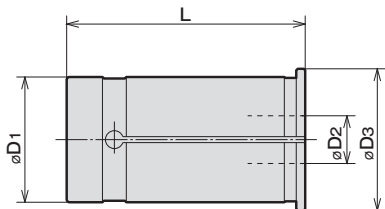
P.40 ADJUST SCREW, CHUCK WRENCH

ACCESSORIES for MICRON CHUCK (Milling Chuck)



STRAIGHT COLLET

SC^①-^②



CODE SC ^① - ^②		øD3	L
SC16	-6·8·10·12	20	47
SC20	-6·6.8·7·8·8.5·9·10·11·12·13·14·15·16	23.5	50
SC25	-6·6.8·7·8·8.5·9·10·11·12·13·14·15·16·17·18·19·20·21	30	60
SC32	-6·6.8·7·8·8.5·9·10·11·12·13·14·15·16·17·18·19·20·21·22·23·24·25	37.5	70
SC42	-6·6.8·7·8·8.5·9·10·11·12·13·14·15·16·17·18·19·20·21·22·23·24·25·32	47.5	80

ORDERING EXAMPLE

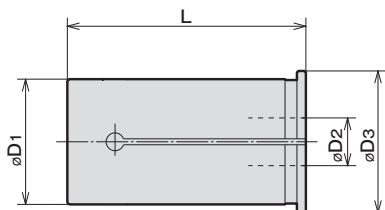
① SC ② 16 - ③ 6

- ① Name
- ② D1
- ③ D2



STRAIGHT COLLET (Oil-Hole Type)

SCOH^①-^②



CODE SCOH ^① - ^②	øD3	L	Qty of smallest insertion
SCOH20	23.5	54.5	-6
			-8
			-10
			-12
			-16
SCOH25	30	60	-6
			-8
			-10
			-12
			-16
SCOH32	37.5	70	-6
			-8
			-10
			-12
			-16

CODE SCOH ^① - ^②	øD3	L	Qty of smallest insertion
SCOH42	47.5	80	-6
			-8
			-10
			-12
			-16
			-20
			-25
-32			

ORDERING EXAMPLE

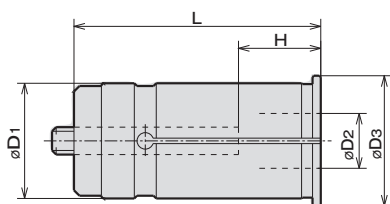
① SCOH ② 32 - ③ 20

- ① Name
- ② D1
- ③ D2



STRAIGHT COLLET WITH ADJUST SCREW

NC^①-^②



CODE NC ^① - ^②	øD3	L	H	
			MIN.	MAX.
NC20	-6·8·10·12·16	23.5	60	25 - 35
NC32	6·8·10	37.5	80	20 - 45
	-12·16·20·25			25 - 55
NC42	-6·8·10·12	47.5	90	20 - 45
	-16·20·25·32			30 - 65

NOTE : Applicable to Micron chucks and Hard chucks.

ORDERING EXAMPLE

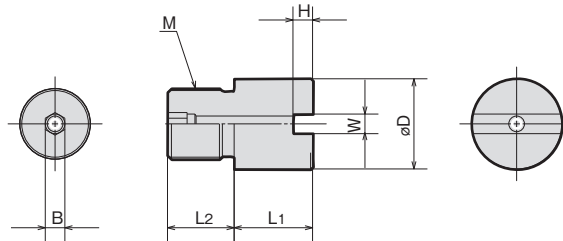
① NC ② 32 - ③ 6

- ① Name
- ② D1
- ③ D2

ACCESSORIES for MICRON CHUCK (Milling Chuck)



ADJUST SCREW (For MICRON CHUCK standard)



MODEL	CODE	øD	M	L1	L2	W	H	B	MICRON CHUCK
HAS1620-05	17602	15	M10×1.0	5	14	5	3.5	5	HPC16 HPC20
HAS1620-15	17604			15					
HAS1620-25	17606			25					
HAS2532-10	17612	23	M18×1.0	10	17	5	5	5	HPC25 HPC32
HAS2532-20	17614			20					
HAS2532-35	17616			35					
HAS4250-10	17622	33	M18×1.0	10	17	5	5	5	HPC42 HPC50
HAS4250-20	17624			20					
HAS4250-35	17626			35					

NOTE : 1. The above Adjust Screws are sold separately.
 2. Above Adjust Screws can not be used for "H" and "M" series Micron Chucks.



CHUCK WRENCH (For MICRON CHUCK standard)

HOOK SPANNER		
CHUCK CODE	WRENCH CODE	
MICRON CHUCK		
HPC16,HPC20	FS52-55G	35852
HPC25,HPC16S,HPC20S	FS58-62G	35853
HPC32,HPC25S	FS68-75G	35854
HPC42,HPC32S	FS80-90G	35855
HPC03H~HPC16H HPC03M~HPC12M HPC03N~HPC12N	FP45-48G	35851