

<汎用機用> 正面フライスアーバA型

NT[Ⓝ] G₂-FMA[Ⓧ] D-L

<NT Shank> FACE MILL ARBOR (Type A)



FIG.1

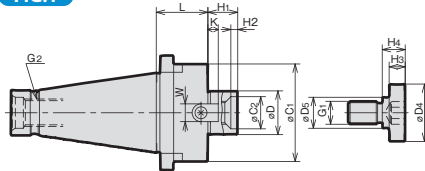


FIG.2

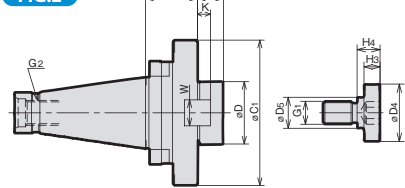
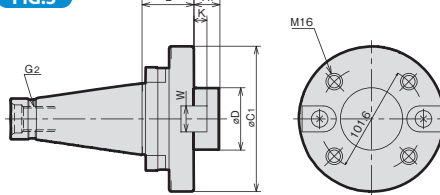


FIG.3



MODEL	CODE	FIG.	øD(hs)	L	øC1	øC2	H1	H2	KEY		G1	CLAMP BOLT				G2	N/W (kg)	
									W	K		øC4	øC5	H3	H4			
NT40 ^U (M)	-FMA25.4 -030	35702 (35704)	1	25.4	30	50	—	22	—	9.5	5	M12	33	23	10	12	5/8-11UNC (M16×2.0)	
	-FMA31.75 -030	35706 (35708)		60		24	30	6	12.7	7	M16	40	23	16				
	-FMA38.1 -030	35710 (35712)	2	38.1		80	28	34	10	19.05	10	M20	50	27	14	20		
	-FMA50.8 -030	35714 (35716)		50.8		98	38	36	10	19.05	10	M24	65	37	24			
NT50 ^U (M)	-FMA25.4 -030	35720 (35722)	1	25.4	30	50	—	22	—	9.5	5	M12	33	23	10	12	1-8UNC (M24×3.0)	3.5
	-FMA31.75 -030	35724 (35726)		60		24	30	6	12.7	7	M16	40	23	16				
	-FMA38.1 -030	35728 (35730)		80		28	34	10	19.05	10	M20	50	27	14	20			
	-FMA50.8 -030	35732 (35734)		50.8		98	38	36	10	19.05	10	M24	65	37	24			
	-FMA47.625-045	35736 (35738)	3	47.625	45	128.57	—	38	—	25.4	12.5	—	—	—	—	—		

ご注文例 ORDERING EXAMPLE

①	NT50	②	U	③	FMA	④	31.75	⑤	030
①	シャンクサイズ		Shank Size						
②	引きネジ		G2 type						
③	呼称		Name						
④	インロー径		D						
⑤	ゲージライン長さ		L						