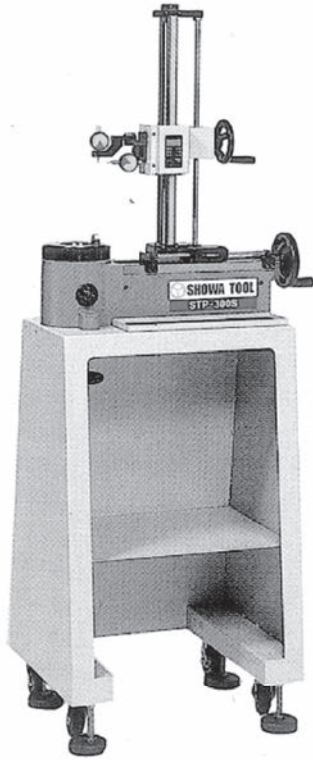
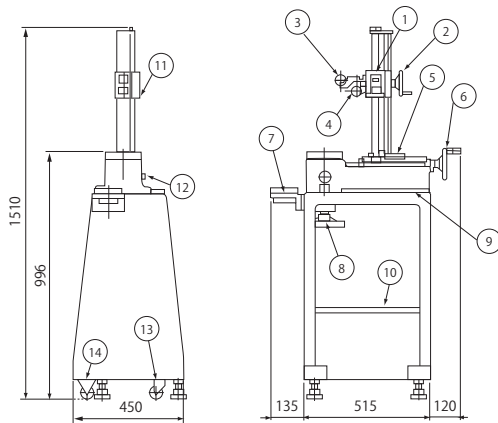


TOOL PRESETTER

STP-300S (SIMPLE TYPE)



External Dimensions

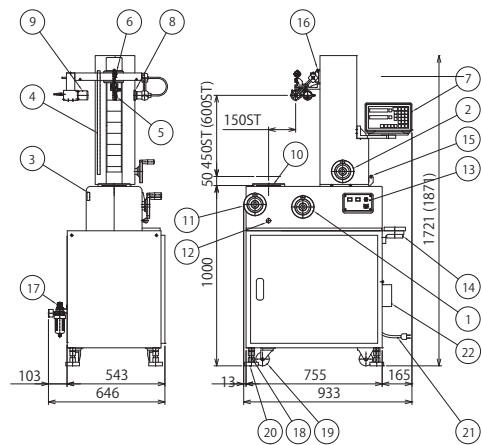


- | | |
|------------------------------|------------------------|
| ① Z-axis Measurement Unit | ⑧ Tool Setting Handle |
| ② Z-axis Handle | ⑨ Plate |
| ③ Z-axis Dial Gauge | ⑩ Shelf |
| ④ X-axis Dial Gauge | ⑪ Z-axis Moving Handle |
| ⑤ X-axis Measurement Unit | ⑫ Fixing for Spindle |
| ⑥ X-axis Handle | ⑬ Caster(Rotary type) |
| ⑦ Tool Setting Pot(Optional) | ⑭ Caster |

STP-300N (STANDARD TYPE)



External Dimensions



- | | |
|---------------------------|-----------------------------|
| ① X-axis movement handle | ⑫ Spindle lock pin |
| ② Z-axis movement handle | ⑬ Operation panel |
| ③ X-axis Scale | ⑭ Tool tightening mount |
| ④ Z-axis Scale | ⑮ X-axis refueling entrance |
| ⑤ X-axis dial gauge | ⑯ Z-axis refueling entrance |
| ⑥ Z-axis dial gauge | ⑰ Filter regulator |
| ⑦ Digital display counter | ⑱ Level bolt |
| ⑧ Back light | ⑲ Caster |
| ⑨ CCD camera | ⑳ Pedestal |
| ⑩ Spindle | ㉑ Power cable |
| ⑪ Spindle rotation handle | ㉒ Oil receptacle |

BT series

HSK series

ST series

Versatile Tool

Cutting Tool

Accessories

TOOL PRESETTER

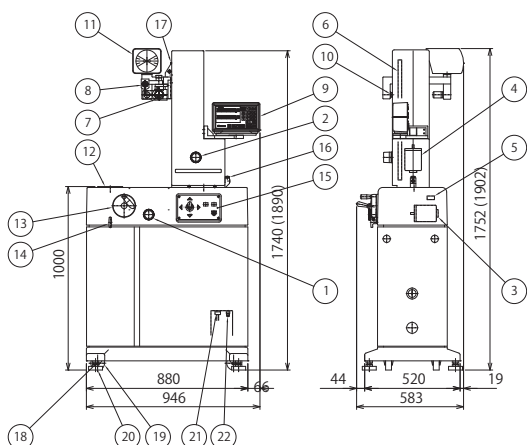
STP-400 (QUALITY TYPE)



STP-500 (HI-QUALITY TYPE)

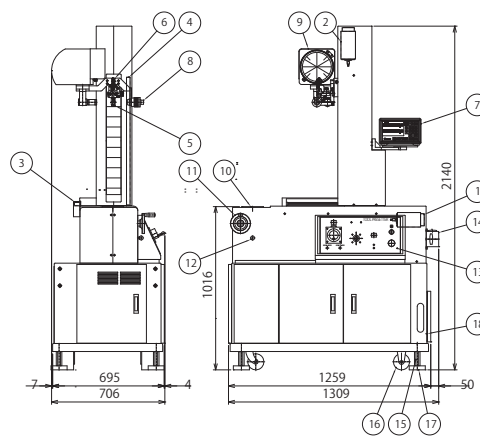


External Dimensions



- | | |
|------------------------------|-----------------------------|
| ① X-axis handle | ⑫ Spindle |
| ② Z-axis handle | ⑬ Spindle rotation handle |
| ③ X-axis motor | ⑭ Spindle lock pin |
| ④ Z-axis motor | ⑮ Operation panel |
| ⑤ Z-axis Scale | ⑯ X-axis refueling entrance |
| ⑥ X-axis dial gauge | ⑰ Z-axis refueling entrance |
| ⑦ X-axis dial gauge | ⑱ Level bolt |
| ⑧ Z-axis dial gauge | ⑲ Caster |
| ⑨ Digital display counter | ⑳ Pedestal |
| ⑩ Projector(Light source) | ㉑ Connecting unit |
| ⑪ Projector(Projection part) | ㉒ Air connection entrance |

External Dimensions



- | | |
|------------------------------|---------------------------|
| ① X-axis AC servomotor | ⑩ Spindle |
| ② Z-axis AC servomotor | ⑪ Spindle rotation handle |
| ③ X-axis Scale | ⑫ Spindle lock pin |
| ④ Z-axis Scale | ⑬ Operation panel |
| ⑤ X-axis dial gauge | ⑭ Hand pump |
| ⑥ Z-axis dial gauge | ⑮ Level bolt |
| ⑦ Digital display counter | ⑯ Caster |
| ⑧ Projector(Light source) | ⑰ Pedestal |
| ⑨ Projector(Projection part) | ⑱ Connecting unit |

TOOL PRESETTER

Specifications

CODE		STP-300S (Simple Type)	STP-300N (Standard type)	STP-400 (Quality Type)	STP-500 (HI-Quality Type)
		80070	80074	80076	80078
Measurement Range	X-axis	0~ø300	0~ø300	0~ø400	0~ø500 0~ø800
	Z-axis	30~430 (op. 630)	50~500 (op. 650)	50~500 (op. 650)	50~650
Digital Display Unit	X-axis	0.02 (dia)	0.002 (dia)	0.002 (dia)	0.002 (dia)
	Z-axis	0.01	0.005 (0.001)	0.005 (0.001)	0.005 (0.001)
Dial Gauge Reading	X-axis	0.01	0.001	0.001	0.001
	Z-axis	0.01	0.01 (op. 0.001)	0.01 (op. 0.001)	0.01 (op. 0.001)
Feed Mechanism	X-axis	Special screw	Ball screw	Ball screw	Ball screw
	Z-axis	Special screw	Ball screw	Ball screw	Ball screw
Operation Method (X-axis & Z-axis)		Manual (Using handle)	Manual (Using handle)	Electric (2 levels) Manual (Fine Adjustment)	Electric (2 levels) Plus handle (Fine Adjustment)
Motor Type (X-axis & Z-axis)		————	————	Induction motor	AC servo motor
Optical Projector	Screen Dia.	————	ø80 (op. ø180)	ø120 (op. ø180)	ø180
	Magnification	————	×10 (op. ×20)	×10 (op. ×20)	×20
Spindle Shank (To be selected)		BT30,40,50 HSK32,40,50,63,80,100 KM32,40,50,63,80	BT30,35,40,45,50 (op. Ceramic Spindle) HSK32,40,50,63,80,100 KM32,40,50,63,80 (op. Tool height adjustment mechanism type) (op. Double spindle type TP-300N only)		
Auto Tool Locking		Manual (Using handle)	Air pressure 0.4~0.7MPa (4~7kgf/cm ²) (op. Hydraulic type)		
Tool Clamping Force (kgf)		————	450 (Air pressure 0.5MPa)	1200 (Hydraulic type)	
Power Supply		————	AC100V 10% 50/60Hz Please advise when ordering if another voltage is required. (Optional)		AC200V 10% 50/60Hz
External Dimensions (mm) W×D×H		768×450×1520	933×646×1721	946×583×1740	1309×706×2140
Weight (kg)		70	350	400	700
Standard accessories		Battery for Digimatic scale unit		Light source lanmp	
		Master gauge L150, Taper cleaner, Wrench set, Cover set, Spanner, Pedestal, Manual, Accuracy Table			

BT series

HSK series

ST series

Versatile Tool

Cutting Tool

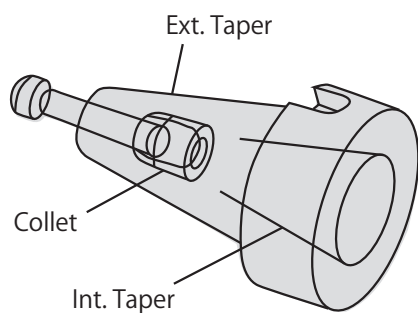
Accessories

TOOL PRESETTER ACCESSORIES

• When ordering, please inform code no. and pull-stud no.



TAPER REDUCTION POT



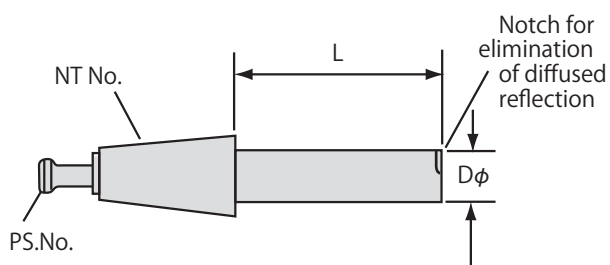
MODEL	CODE	Ext. Taper		Int. Taper
T4030	80081	NT40	—	NT30
T4035	80082	NT40	—	NT35
T5030	80083	NT50	—	NT30
T5035	80084	NT50	—	NT35
T5040	80085	NT50	—	NT40
T5045	80086	NT50	—	NT45

By using Taper Reduction Pots, a single presetter can serve all of your setting needs. The pull-stud is built in, so measurement can be done with tension on the pull-stud.

※ A pull-adaptor is available which allows both regular and ANSI types to be used.
 ※ Taper reduction pots for NT50-HSK (32~100) and NT50-KM (32~100) and NT50-KM (32~80) are also available.



TEST BAR



MODEL	CODE	Taper	∅D	L
G30	80091	NT30	∅30	150mm
G35		NT35	∅40	150mm
G40	80092	NT40	∅40	150mm
G45		NT45	∅40	150mm
G50	80094	NT50	∅40	150mm
G425	80093	NT40	∅40	250mm
G525	80095	NT50	∅50	250mm
G530	80096	NT50	∅50	300mm

A 150mm length test bar is included as standard, and 250 and 300mm test bars also available.

※ 250mm length test bars for HSK and KM are also available.