

# <NT Shank> S-HOLDER (Q.C. Holder)

# S-HOLDER

An ace of quick change holders



Tool change can be done in **3 seconds.**

High rigidity makes the holder possible to use a 200mm(8") face mill.

## FEATURES

SHOWA s-Holder is the most safe, strong and speedy (3S) quick change holder, with variety of sub-holders.

### Safe

The outstanding chucking ability of S-Holder assures safety operations.

### Strong

Up to a 200mm(8") face mill can be used due to the highest rigidity of the holder.

### Speedy

Sub-holders can be changed quick by the forced load and unload mechanism (PAT.831025) eliminating the use of a hammer.

## <S-HOLDER> SET

S NT No. - HARD CHUCK SIZE

### ORDERING EXAMPLE

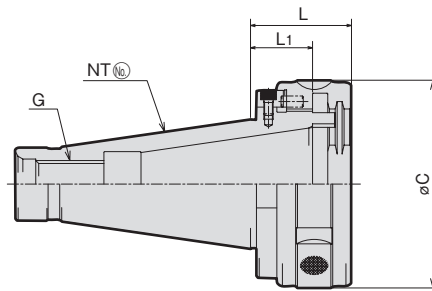
① S ② 40U - ③ 25

- ① Name
- ② Spindle NT No.
- ③ HARD CHUCK Size

SET CODE	S40U-25	S40U-32	S50U-32	S50M-32	S50U-42	S50M-42
	36002	36004	36006	36007	36008	36009
SPINDLE NT No.	NT40-U	NT40-U	NT50-U	NT50-M	NT50-U	NT50-M
S-Holder Body	S40U	S40U	S50U	S50M	S50U	S50M
TAPER SLEEVE	40S1-MT3		50S1-MT4			
HARD CHUCK	40S2-25	40S2-32	50S2-32		50S2-42	
FACE MILL ARBOR	40S3-F4		50S3-F6			
STRAIGHT COLLET	SC25-06,08 10,12,16,20	SC32-06,08,10 12,16,20,25	SC32-06,08,10 12,16,20,25		SC42-06,08,10 12,16,20,25,32	
TAPER COLLET	25-MT1,MT2	32-MT2,MT3	32-MT2,MT3		42-MT2,MT3	
DRILL CHUCK ARBOR	25-J6	32-J6	32-J6		42-J6	
HOOK SPANNER	FS68-75 FS80-90	FS80-90	FS80-90 FS110-115		FS92-100 FS110-115	
HEXAGON WRENCH	B14		B17			

# S-HOLDER BODY (Q.C. Holder)

S **NT No.** **G**-HOLDER



MODEL	CODE	NT No.	L <sub>1</sub>	L	øC	G
S40U-HOLDER	36012	NT40	30.85	44.85	87	5/8-11UNC
S50U-HOLDER	36102	NT50	33.45	54.45	112	1-8UNC
S50M-HOLDER	36103	NT50	33.45	54.45	112	M24×3

### ORDERING EXAMPLE

① **S** ② **40** ③ **U** - ④ **HOLDER**

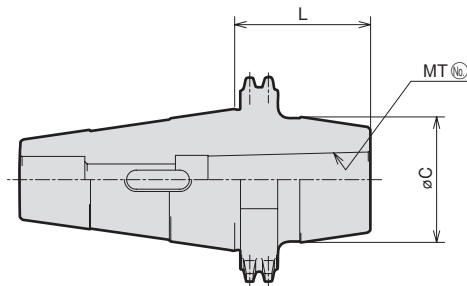
① Name

② NT No.

③ G type

# <S-HOLDER> TAPER SLEEVE (S<sub>1</sub> Collet)

**NT No.** **S<sub>1</sub>-MT** **No.**



MODEL	CODE	MT No.	L	øC
40S <sub>1</sub> -MT1	36014	MT1	52	40
-MT2	36016	MT2	52	40
-MT3	36018	MT3	62	41
-MT4	36020	MT4	100	41
50S <sub>1</sub> -MT1	36104	MT1	93.5	44
-MT2	36106	MT2	58.5	54
-MT3	36108	MT3	58.5	54
-MT4	36110	MT4	58.5	54
-MT5	36112	MT5	110	61

### ORDERING EXAMPLE

① **40** ② **S<sub>1</sub>** ③ **MT1**

① NT No.

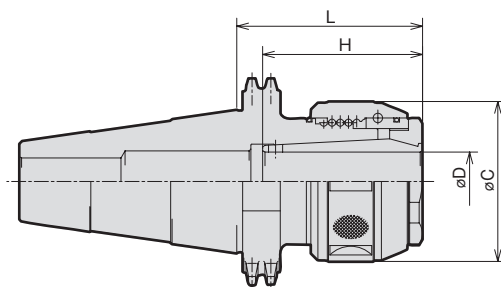
② Name

③ MT No.

# <S-HOLDER> **HARD CHUCK** (S<sub>2</sub> Collet)

FEATURES p. 7-8

NT No. **S<sub>2</sub>-D**



MODEL	CODE	øD	L	øC	H
40S <sub>2</sub> -25	36022	25	70	68	68
-32	36024	32	95	83	70
50S <sub>2</sub> -32	36122	32	80	83	80
-42	36124	42	99	95	90

NOTE : 1. Please refer to P.41 for chuck wrench.  
2. Please refer to P.40 for spring collet and P.40 for straight collet.

**ORDERING EXAMPLE**

① 40 ② S<sub>2</sub> - ③ 25

① NT No.  
② Name  
③ Cutter's Dia. øD

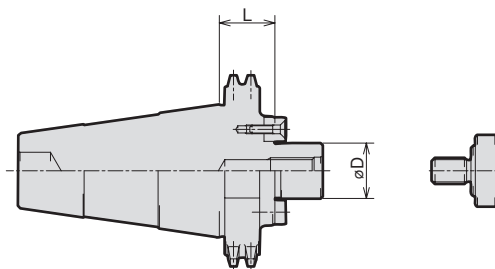
ACCESSORIES  
➔ **P.47** **SPLING COLLET**

ACCESSORIES  
➔ **P.48** **STRAIGHT COLLETS**

ACCESSORIES  
➔ **P.49** **CHUCK WRENCH**

# <S-HOLDER> **FACE MILL ARBOR** (S<sub>3</sub> Collet)

NT No. **S<sub>3</sub>-F** Dia.(in)



MODEL	CODE	øD	L	Face Mill Dia.
40S <sub>3</sub> -F3	36032	25.4	19	80 (3")
-F4	36034	31.75	19.5	105 (4")
-F5	36036	38.1	28	125 (5")
-F6	36038	50.8	31	160 (6")
50S <sub>3</sub> -F3	36132	25.4	25.5	80 (3")
-F4	36134	31.75	26	105 (4")
-F5	36136	38.1	27.5	125 (5")
-F6	36138	50.8	37.5	160 (6")
-F8	36140	47.625	47.5	200 (8")

**ORDERING EXAMPLE**

① 40 ② S<sub>3</sub> - ③ F ④ 3

① NT No.  
② Name  
③ Name  
④ Cutter's Dia.

BT series

HSK series

ST series

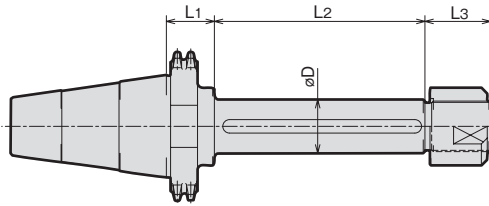
Versatile Tool

Cutting Tool

Accessories

<S-HOLDER> **SIDE CUTTER ARBOR** (S<sub>4</sub> Collet)

NT No. **S<sub>4</sub>-D-L<sub>2</sub>**



MODEL	CODE	$\phi D$	L1	L2	L3
40S4-25.4 -075	36042	25.4	22	75	33
50S4-25.4 -100	36152	25.4	28.5	100	33
50S4-31.75-125	36154	31.75	28.5	125	39

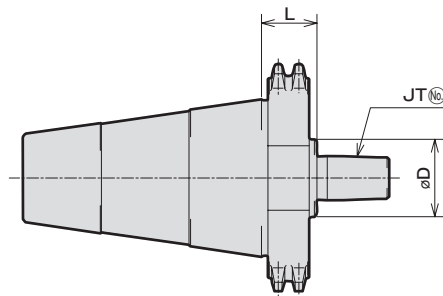
**ORDERING EXAMPLE**

① **40** ② **S<sub>4</sub>** - ③ **25.4** ④ **075**

- ① NT No.
- ② Name
- ③  $\phi D$
- ④ L<sub>2</sub>

<S-HOLDER> **DRILL CHUCK HOLDER** (S<sub>6</sub> Collet)

NT No. **S<sub>6</sub>-J<sup>(No)</sup>**



MODEL	CODE	JT No.	L	$\phi C$
40S <sub>6</sub> -J6	36044	6	17	30
50S <sub>6</sub> -J6	36162	6	21.5	30

**ORDERING EXAMPLE**

① **40** ② **S<sub>6</sub>** - ③ **J6**

- ① NT No.
- ② Name
- ③ JT No.

ACCESSORIES for HARD CHUCK



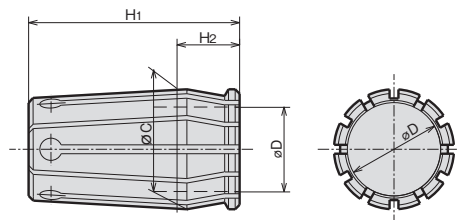
# SPRING COLLET (For HARD CHUCK)

C<sup>①</sup> - D<sup>②</sup>

ORDERING EXAMPLE

<sup>①</sup> C12 - <sup>②</sup> 6

- ① Chuck Type
- ②  $\phi$ D



CODE	$\phi$ D										$\phi$ C	H1	H2	Applicable holder			
														CTH12L	CTH	CT	
C12L-D	6	8	10	12							18.00	40	13	CTH12L	—	—	
C16-D	6	8	10	12	16						24.00	50	17	—	CTH16	—	
C20-D	6	8	10	12	16	20					28.75	50	15	—	CTH20	—	
C25-D			10	12	16	20	25				35.75	68	19	—	CTH25	CT25	
C32-D					16	20	25	32			45.25	80	21	—	CTH32	CT32	
※CS32-D(SHORT)					16	20	25	32			45.25	70	21	—	CTH32	—	
C42-D						20	25	32	42		55.00	90	21	—	CTH42	—	
C50-D								32	42	50	50.8	65.00	95	25	—	CTH50	—

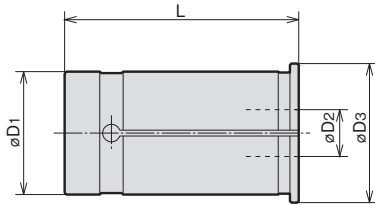
NOTE※ CS32-D(SHORT) spring collet is for BT40·NT40 Hard Chuck.

ACCESSORIES for HARD CHUCK



# STRAIGHT COLLET

SC<sup>①</sup>-<sup>②</sup>D<sub>2</sub>



CODE		øD3	L
SC <sup>①</sup> - <sup>②</sup> D <sub>2</sub>			
SC16	-6·8·10·12	20	47
SC20	-6·6.8·7·8·8.5·9·10·11·12·13·14·15·16	23.5	50
SC25	-6·6.8·7·8·8.5·9·10·11·12·13·14·15·16·17·18·19·20·21	30	60
SC32	-6·6.8·7·8·8.5·9·10·11·12·13·14·15·16·17·18·19·20·21·22·23·24·25	37.5	70
SC42	-6·6.8·7·8·8.5·9·10·11·12·13·14·15·16·17·18·19·20·21·22·23·24·25·32	47.5	80

ORDERING EXAMPLE

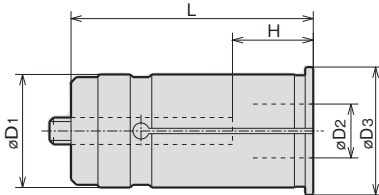
① SC ② 16 - ③ 6

- ① Name
- ② D1
- ③ D2



# STRAIGHT COLLET WITH ADJUST SCREW

NC<sup>①</sup>-<sup>②</sup>D<sub>2</sub>



CODE		øD3	L	H	
NC <sup>①</sup> - <sup>②</sup> D <sub>2</sub>				MIN.	MAX.
NC20	-6·8·10·12·16	23.5	60	25	35
	-6·8·10			20	45
NC32	-12·16·20·25	37.5	80	25	55
	-6·8·10·12			20	45
NC42	-16·20·25·32	47.5	90	30	65

Note:  
\* For all SHOWA chuck

ORDERING EXAMPLE

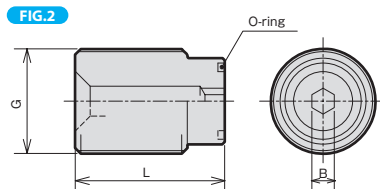
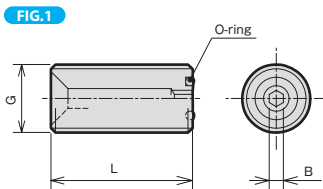
① NC ② 32 - ③ 6

- ① Name
- ② D1
- ③ D2



# ADJUST SCREW (For HARD CHUCK, NEW MILLING CHUCK)

OR-M<sup>①</sup>-<sup>②</sup>L



ORDERING EXAMPLE

① OR ② M10 - ③ 25

- ① Name
- ② G
- ③ L

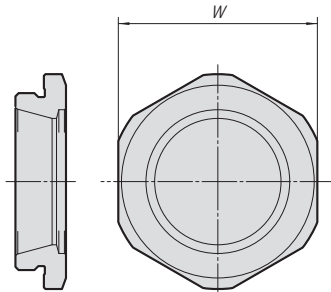
CODE	FIG.	G	L	B	O-ring
OR-M10(-25)	1	M10×1.5	25	2.5	S- 5
OR-M12(-25)		M12×1.5	25	2.5	S- 5
OR-M14(-35)		M14×1.5	35	4	P- 6
OR-M18(-25)		M18×1.5	25	5	P- 9
OR-M18(-35)		M18×1.5	35	5	P- 9
OR-M24 -25	2	M24×1.5	25	6	P- 9
OR-M24(-35)		M24×1.5	35	6	P- 9
OR-M28 -25		M28×1.5	25	6	P-16
OR-M28 -30		M28×1.5	30	6	P-16
OR-M28(-40)		M28×1.5	40	6	P-16
OR-M36 -20		M36×1.5	20	6	P-21
OR-M36(-40)		M36×1.5	40	6	P-21

ACCESSORIES for HARD CHUCK



## NOSE PIECE (For HARD CHUCK)

N<sup>(No.)</sup>-D

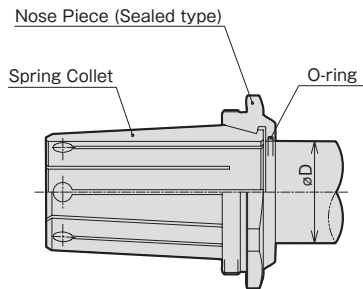


MODEL	CODE	W	holder
N16-16	33702	39	CTH16
N20-20	33703	43	CTH20
N25-25	33704	51	CTH25
N32-32	33706	63	CTH32
N42-42	33708	74	CTH42
N50-50	33710	84	CTH50



## NOSE PIECE (For HARD CHUCK)

NG<sup>(No.)</sup>-D



**ORDERING EXAMPLE**

① **NG** ② **16** - ③ **6**

- ① Name
- ② Chuck Size
- ③ øD

CODE	øD						HARD CHUCK CODE					
NG16-øD	6	8	10	12	16						CTH16	
NG20-øD	6	8	10	12	16	20					CTH20	
NG25-øD				12	16	20	25				CTH25	
NG32-øD					16	20	25	32			CTH32	
NG42-øD						20	25	32	42		CTH42	
NG50-øD								32	42	50	50.8	CTH50



## CHUCK WRENCH (For HARD CHUCK)

HOOK SPANNER		
CHUCK CODE	WRENCH CODE	
HARD CHUCK		
CTH12L,CTH16	FS52-55G	35852
CTH20,CT25G	FS58-62G	35853
CTH25,CT32G	FS68-75G	35854
CTH32	FS80-90G	35855
CTH42	FS92-100	
CTH50	FS105-115	35829