

MODEL	CODE	øD	L	øC	H	G
NT30W -CTH20	33004	20	62	60	50	w $\frac{1}{2}$ -12
NT40 ^U _(M) -CTH25	33006 (33026)	25	65	68	68	$\frac{5}{8}$ -11UNC (M16×2)
-CTH32	33008 (33028)	32	82.6	80	70(Short)	
NT50 ^U _(M) -CTH32	33010 (33030)	32	76.2	80	80	1-8UNC (M24×3)
-CTH42	33012 (33032)	42	82	95	90	
-CTH50(50.8)	33014 (33034)	50(50.8)	120	105	95	

NOTE : 1. Chuck wrench is included.



ACCESSORIES

▶ P.48 ADJUST SCREW



ACCESSORIES

▶ P.47-49 SPRING COLLET, CHUCK WRENCH

ORDERING EXAMPLE

① NT30 ② W - ③ CTH ④ 20

- ① Shank Size
- ② G type
- ③ Name
- ④ Cutter's Dia. øD

<NT Shank> HARD CHUCK (A-set)

NT (No) (G) -CTH (D) A



ORDERING EXAMPLE				
①	NT30	②	W	-
		③	CTH	④
				20
				⑤
				A

- ① Shank Size
- ② Thread type
- ③ Name
- ④ Cutter's Dia. øD
- ⑤ Set type

MODEL	CODE	HARD CHUCK	STRAIGHT COLLET	HOOK SPANNER
NT30W -CTH20 A	33302	NT30W -CTH20	SC20-06,08,10,12,16	FS58-62G
NT40U(M)-CTH25 A	33304 (33404)	NT40U(M)-CTH25	SC25-06,08,10,12,16,20	FS68-75G
NT40U(M)-CTH32 A	33306 (33406)	NT40U(M)-CTH32	SC32-06,08,10,12,16,20,25	FS80-90G
NT50U(M)-CTH32 A	33308 (33408)	NT50U(M)-CTH32	SC32-06,08,10,12,16,20,25	FS80-90G
NT50U(M)-CTH42 A	33310 (33410)	NT50U(M)-CTH42	SC42-06,08,10,12,16,20,25,32	FS92-100

NOTE : Please refer to P.139 for dimensions of HARD CHUCK.

<NT Shank> HARD CHUCK (B-set)

NT (No) (G) -CTH (D) B



ORDERING EXAMPLE				
①	NT30	②	W	-
		③	CTH	④
				20
				⑤
				B

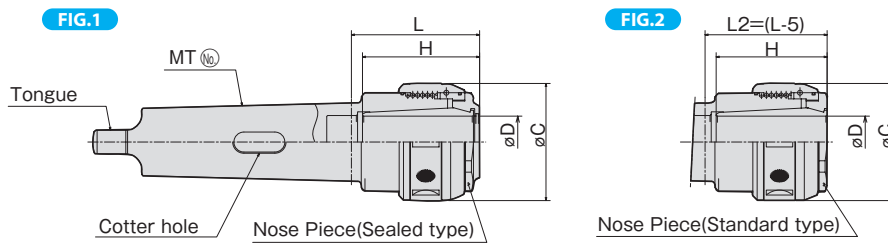
- ① Shank Size
- ② Thread type
- ③ Name
- ④ Cutter's Dia. øD
- ⑤ Set type

MODEL	CODE	HARD CHUCK	STRAIGHT COLLET	TAPER COLLET	DRILL CHUCK ARBOR	HOOK SPANNER
NT30W -CTH20 B	33322	NT30W -CTH20	SC20-06,08,10,12,16	20-MT1,MT2	20-J6	FS58-62G
NT40U(M)-CTH25 B	33324 (33424)	NT40U(M)-CTH25	SC25-06,08,10,12,16,20	25-MT1,MT2	25-J6	FS68-75G
NT40U(M)-CTH32 B	33326 (33426)	NT40U(M)-CTH32	SC32-06,08,10,12,16,20,25	32-MT1,MT2,MT3	32-J6	FS80-90G
NT50U(M)-CTH32 B	33328 (33428)	NT50U(M)-CTH32	SC32-06,08,10,12,16,20,25	32-MT1,MT2,MT3	32-J6	FS80-90G
NT50U(M)-CTH42 B	33330 (33430)	NT50U(M)-CTH42	SC42-06,08,10,12,16,20,25,32	42-MT1,MT2,MT3,MT4	42-J6	FS92-100

NOTE : Please refer to P.139 for dimensions of HARD CHUCK.

FEATURES

- The ball screw structure provides high clamping power.
- Easy handling.
- High accuracy and rigidity are kept long.



MODEL	FIG	øD	L	øC	H
MT4-CTH25	2	25	86.5	68	60
-CTH32		32	98.5	83	80
MT5-CTH32	1	32	103.5	83	85
-CTH42		42	117.5	95	95
MT6-CTH32	1	32	84	83	85
-CTH42		42	104	95	95
-CTH50(50.8)		50(50.8)	120	105	100
MT7-CTH42	1	42	80	95	95
-CTH50(50.8)		50(50.8)	115	105	100

NOTE: 1. Please inform machine maker and model, when ordering with cotter hold which differs depending on them.

ORDERING EXAMPLE

① MT5 - ② CTH ③ 25 ④

- ① Shank Size
- ② Name
- ③ Cutter's Dia. øD
- ④ Machine maker



ACCESSORIES

➔ P.47 SPRING COLLET



ACCESSORIES

➔ P.48 STRAIGHT COLLETS, ADJUST SCREW



ACCESSORIES

➔ P.49 CHUCK WRENCH

ACCESSORIES for HARD CHUCK



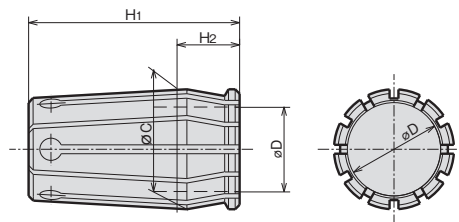
SPRING COLLET (For HARD CHUCK)

C^① - D^②

ORDERING EXAMPLE

^① C12 - ^② 6

- ① Chuck Type
- ② ϕ D



CODE	ϕ D										ϕ C	H1	H2	Applicable holder			
														CTH12L	CTH	CT	
C12L-D	6	8	10	12							18.00	40	13	CTH12L	—	—	
C16-D	6	8	10	12	16						24.00	50	17	—	CTH16	—	
C20-D	6	8	10	12	16	20					28.75	50	15	—	CTH20	—	
C25-D			10	12	16	20	25				35.75	68	19	—	CTH25	CT25	
C32-D					16	20	25	32			45.25	80	21	—	CTH32	CT32	
※CS32-D(SHORT)					16	20	25	32			45.25	70	21	—	CTH32	—	
C42-D						20	25	32	42		55.00	90	21	—	CTH42	—	
C50-D								32	42	50	50.8	65.00	95	25	—	CTH50	—

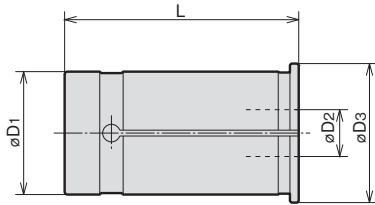
NOTE※ CS32-D(SHORT) spring collet is for BT40·NT40 Hard Chuck.

ACCESSORIES for HARD CHUCK



STRAIGHT COLLET

SC^①-^②D₂



CODE		øD3	L
SC ^① - ^② D ₂			
SC16	-6·8·10·12	20	47
SC20	-6·6.8·7·8·8.5·9·10·11·12·13·14·15·16	23.5	50
SC25	-6·6.8·7·8·8.5·9·10·11·12·13·14·15·16·17·18·19·20·21	30	60
SC32	-6·6.8·7·8·8.5·9·10·11·12·13·14·15·16·17·18·19·20·21·22·23·24·25	37.5	70
SC42	-6·6.8·7·8·8.5·9·10·11·12·13·14·15·16·17·18·19·20·21·22·23·24·25·32	47.5	80

ORDERING EXAMPLE

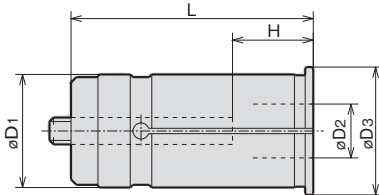
① SC ② 16 - ③ 6

- ① Name
- ② D1
- ③ D2



STRAIGHT COLLET WITH ADJUST SCREW

NC^①-^②D₂



CODE		øD3	L	H	
NC ^① - ^② D ₂				MIN.	MAX.
NC20	-6·8·10·12·16	23.5	60	25	35
	-6·8·10			20	45
NC32	-12·16·20·25	37.5	80	25	55
	-6·8·10·12			20	45
NC42	-16·20·25·32	47.5	90	30	65

Note:
* For all SHOWA chuck

ORDERING EXAMPLE

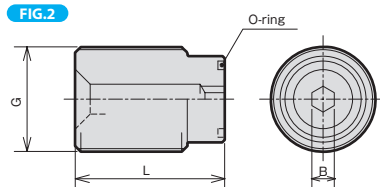
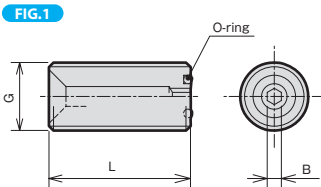
① NC ② 32 - ③ 6

- ① Name
- ② D1
- ③ D2



ADJUST SCREW (For HARD CHUCK, NEW MILLING CHUCK)

OR-M^①-^②L



ORDERING EXAMPLE

① OR ② M10 - ③ 25

- ① Name
- ② G
- ③ L

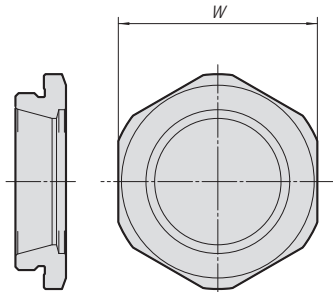
CODE	FIG.	G	L	B	O-ring
OR-M10(-25)	1	M10×1.5	25	2.5	S- 5
OR-M12(-25)		M12×1.5	25	2.5	S- 5
OR-M14(-35)		M14×1.5	35	4	P- 6
OR-M18(-25)		M18×1.5	25	5	P- 9
OR-M18(-35)		M18×1.5	35	5	P- 9
OR-M24 -25	2	M24×1.5	25	6	P- 9
OR-M24(-35)		M24×1.5	35	6	P- 9
OR-M28 -25		M28×1.5	25	6	P-16
OR-M28 -30		M28×1.5	30	6	P-16
OR-M28(-40)		M28×1.5	40	6	P-16
OR-M36 -20		M36×1.5	20	6	P-21
OR-M36(-40)		M36×1.5	40	6	P-21

ACCESSORIES for HARD CHUCK



NOSE PIECE (For HARD CHUCK)

N^(No.)-D

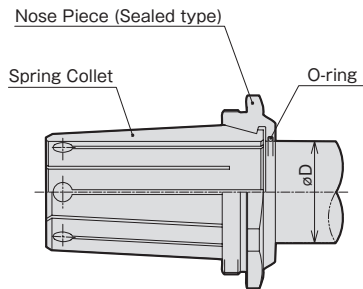


MODEL	CODE	W	holder
N16-16	33702	39	CTH16
N20-20	33703	43	CTH20
N25-25	33704	51	CTH25
N32-32	33706	63	CTH32
N42-42	33708	74	CTH42
N50-50	33710	84	CTH50



NOSE PIECE (For HARD CHUCK)

NG^(No.)-D



ORDERING EXAMPLE

① NG ② 16 - ③ 6

- ① Name
- ② Chuck Size
- ③ øD

CODE	øD						HARD CHUCK CODE					
NG16-øD	6	8	10	12	16						CTH16	
NG20-øD	6	8	10	12	16	20					CTH20	
NG25-øD				12	16	20	25				CTH25	
NG32-øD					16	20	25	32			CTH32	
NG42-øD						20	25	32	42		CTH42	
NG50-øD								32	42	50	50.8	CTH50



CHUCK WRENCH (For HARD CHUCK)

HOOK SPANNER		
CHUCK CODE	WRENCH CODE	
HARD CHUCK		
CTH12L,CTH16	FS52-55G	35852
CTH20,CT25G	FS58-62G	35853
CTH25,CT32G	FS68-75G	35854
CTH32	FS80-90G	35855
CTH42	FS92-100	
CTH50	FS105-115	35829