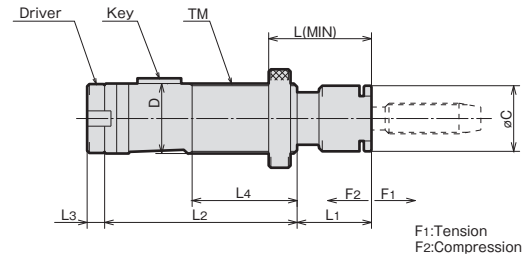


For automotive shanks and SLB holders.

FEATURES

- Compact tension-compression tapper.
- Very short since the parts are housed in the shank.
- Tap, collet and driver can be changed quickly.



MODEL	CODE	øD	L MIN.	L1	L2	L3 DR	L3 CL	L4	øC	KEY WIDTH	TM	F1	F2	TAP SIZE	COLLET	DRIVER	N/W (kg)
AFT01	-19	40002	19	40	30	74	6	18*	38	20	4	14	10	M3-M12 PT ¹ / ₈	TC19	CL19 or DR19	0.15
	-20	40004	20														0.20
	-22	40006	22														0.20
	-26	40010	26	42	32	81	8	23	40	23	5	16	M4-M14 PT ¹ / ₈ - PT ¹ / ₄	TC25	CL25 or DR25	0.35	
	-32	40012	32	44	34	88	8	33	48	30	6	18	15	M5-M20 PT ¹ / ₈ - PT ³ / ₈	TC32	CL32 or DR32	0.44
	-35	40014	35														0.78
	-48	40016	48	58	45	105	43	60	45	8	48×2	20	15	M16-M33 PT ¹ / ₄ - PT1	TC48	CL48 or DR48	1.6

NOTE: 1. * M10, M12 : 18→26
2. Both clutch driver and positive driver are available.

ORDERING EXAMPLE

① **AFT01** - ② **19**

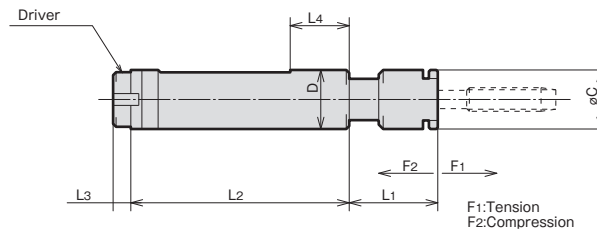
- ① Holder's Name
- ② øD

ACCESSORIES

P.154 BOTH CLUTCH DRIVER AND POSITIVE DRIVER

SIDE LOCK TAPPER (Set Screw Drive)

For endmill holders.



MODEL	CODE	øD	L1	L2	L3 DR	L3 CL	L4	øC	F1	F2	TAP SIZE	COLLET	DRIVER	N/W (kg)
AFT02	-20	30342	20	30	74	6	18*	20	14	10	M3-M12, PT ¹ / ₈	TC19	CL19, DR19	0.18
	-25	30344	25	32	81	8	23	23	16	10	M4-M14, PT ¹ / ₈ - ¹ / ₄	TC25	CL25, DR25	0.32
	-32	30346	32	34	88	8	33	25	30	18	M5-M20, PT ¹ / ₈ - ³ / ₈	TC32	CL32, DR32	0.41

NOTE: 1. * M10, M12 : 18→26
2. Both clutch driver and positive driver are available.

ORDERING EXAMPLE

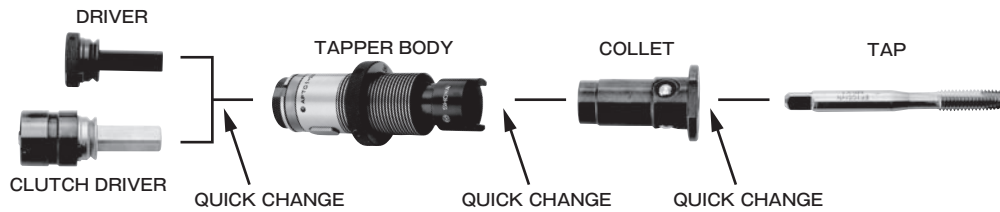
① **AFT02** - ② **20**

- ① Holder's Name
- ② øD

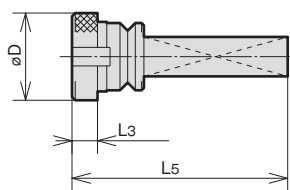
ACCESSORIES

P.154 BOTH CLUTCH DRIVER AND POSITIVE DRIVER

COMPONENTS OF TAPPER



DRIVER (Positive) DR[Ⓧ]



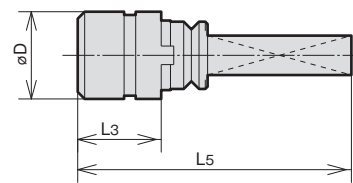
MODEL	CODE	φD	L3	L5	TAPPER
DR	19	19	6	47	19, 20, 22
	25	25	6	47	25, 26, 28
	32	32	8	55	32, 35, 36
	48	48	8	65	48

ORDERING EXAMPLE

① **DR** - ② **19**

- ① Name
- ② Tapper Size

DRIVER (With Torque Clutch) CL[Ⓧ]- (TAP SIZE)



MODEL	CODE	φD	L3	L5	TAPPER
CL	19	19	18*	59**	19, 20, 22
	25	25	23	64	25, 26, 28
	32	32	33	80	32, 35, 36
	48	48	43	100	48

NOTE: 1. * M10, M12 : 18→26
2. * M10, M12 : 59→67

ORDERING EXAMPLE

① **CL** ② **19** - ③ **M4**

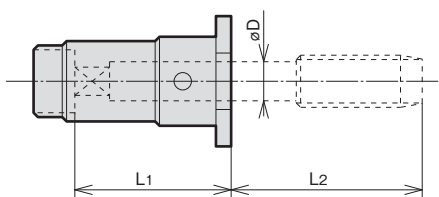
- ① Name
- ② Tapper Size
- ③ Tap Size

TAP COLLET TC[Ⓧ]- (TAP SIZE)

FEATURES

Quick change tap collet.

Push in the tap collet to unload the tap.
Then, tapcollet can be removed by hand.



ORDERING EXAMPLE

① **TC** ② **19** - ③ **M4**

- ① Name
- ② Tapper Size
- ③ Tap Size

HAND TAP (JIS)

CODE	TAP	φD	TC19		TC25		TC32		TC48																									
			L1	L2	L1	L2	L1	L2	L1	L2																								
TC19	M3	4	25	21	25	27	35	35	45	50																								
	M3.5			23																														
	M4			27																														
	TC25	M4.5		5							30	25	30	35	35	45	50																	
		M5									30	25	25																					
	TC32	M6		6							30	32	35	35	38	45	50																	
		M8										40																						
		TC48		M9								7						42	37	34	38	45	50											
				M10														45	40	37														
		TC48		M12								8.5						30	52	35	35	38	45	50										
M14			47																															
TC25			M16	12.5	30	53	35	35	38	45		50																						
			M18			57																												
TC32			M20	15		30													35						35	38	45	50						
			M22																										62					
	TC48		M24	19							30		35	35	38	45	50																	
			M27																										67					
	TC48		M30	23																									30	35	35	38	45	50
			M33																															
		TC48	M33	25														30		35	35	38	45	50										
			M33																															

PIPE TAP (JIS)

CODE	TAP	φD	TC19		TC25		TC32		TC48																											
			L1	L2	L1	L2	L1	L2	L1	L2																										
TC19	PT ¹ / ₈	8	30	25	32	30	32	32	40	40																										
	PT ¹ / ₄										23																									
	TC25	PT ³ / ₈									14	30	25	32	30	32	32	40	40																	
		PT ¹ / ₂																		33																
	TC32	PT ¹ / ₂									18									30	25	32	30	32	32	40	40									
		PT ³ / ₄																										45								
		TC48									PT ³ / ₄																	23	30	25	32	30	32	32	40	40
											PT1																									