

▶▶▶ Thru-the-tool Coolant Available

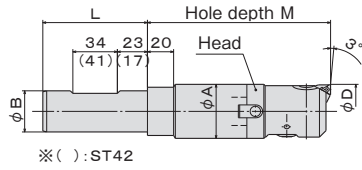


Fig. 1

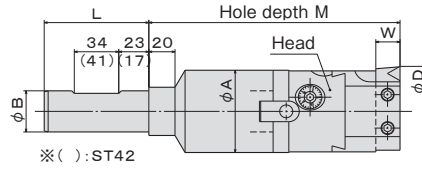


Fig. 2

RANGE	MODEL	Fig	CODE	SHANK	HEAD	BORING TOOL	INSERT	L	M	φA	φB	W	N/W (kg)
φ25~32	-FIC25N-130-S	1	620450	ST32	-SBS1-100	FCH25N	-	80	100	24	32	-	1.1
φ32~44 注4)	-FIC32N-140-S		620452		-SBS2-100	FCH32N			110	31			1.4
φ44~57	-FIC44N-140-S		620454		-SBS3-100	FCH44N			140	42			2.0
φ55~73	-FIC55N-175-S		620456		-SBS4-140	FCH55N			175	54			3.4
φ70~140	-FIC70N-195-S	2	620458	-SBS5-140	FCH70N	TBS119C12 SBS919 TBS919 TSBS919	CP□□1204□□ TP□□1603□□ CC□□1204□□ TC□□16T3□□	195	64	□19	5.2		
φ25~32	-FIC25N-130-S	1	620470	ST42	-SBS1-100	FCH25N	-	90	100	24	42	-	1.7
φ32~44 注4)	-FIC32N-140-S		620472		-SBS2-100	FCH32N			110	31			2.0
φ44~57	-FIC44N-140-S		620474		-SBS3-100	FCH44N			140	42			2.6
φ55~73	-FIC55N-160-S		620476		-SBS4-125	FCH55N			160	54			3.8
φ70~140	-FIC70N-180-S	2	620478	-SBS5-125	FCH70N	TBS119C12 SBS919 TBS919 TSBS919	CP□□1204□□ TP□□1603□□ CC□□1204□□ TC□□16T3□□	180	64	□19	5.4		

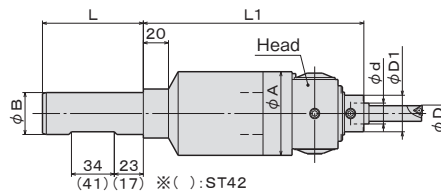
- NOTE :1. Adjustable in φ0.01mm per scale.
 2. Insert on FIC70N is square shank tool.
 3. Inserts and bites are sold separately.
 4. The max machining range means when installed included spacer.
 Without spacer, the max machining range is φ42mm.

ORDERING EXAMPLE

①	②	③	④	⑤	⑥
ST32	-	FIC	25	N	-130-S
① Shank Size					
② Holder's Name					
③ Min. φD					
④ New Type					
⑤ G.L. Length					
⑥ Set					

FIRSTCUT [Small-hole Boring Tool]

ST[Ⓧ]B-FICHEAD[Ⓧ]NJ-L-S



RANGE	MODEL	CODE	SHANK	HEAD	L	L1	φA	φB	φd	φD1	DIAL CALIBRATION	COLLET	N/W (kg)
φ3~23	-FIC1NJ-136-S	620460	ST32	-SBS3-100	FCH1NJ	80	46	32	10	18	φ0.005	SSCP10-□	1.9
φ3~28	-FIC2NJ-175-S	620462		-SBS5-140	FCH2NJ				16	28	φ0.010	SSCP16-□	4.4
φ3~23	-FIC1NJ-136-S	620480	ST42	-SBS3-100	FCH1NJ	90	46	42	10	18	φ0.005	SSCP10-□	2.5
φ3~28	-FIC2NJ-160-S	620482		-SBS5-125	FCH2NJ				16	28	φ0.010	SSCP16-□	4.6

NOTE : Inserts and bites and collets are sold separately.

ORDERING EXAMPLE

①	②	③	④	⑤	⑥
ST32	-	FIC	1	NJ	-136-S
① Shank Size					
② Holder's Name					
③ Head No.					
④ New Jig Borer Type					
⑤ G.L. Length					
⑥ Set					

ACCESSORIES for <BORING SYSTEM>FIRSTCUT



THROWAWAY SQUARE SHANK TOOLS • THROWAWAY JIG BORER TOOLS

THROWAWAY SQUARE SHANK TOOLS

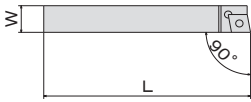


Fig. 1

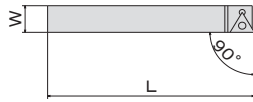
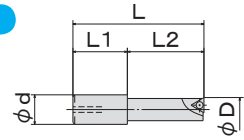


Fig. 2

MIN. RANGE D	MODEL	Fig	CODE	INSERT	W	L
70	TBS919	1	700150	CC□□1204□□	□19	140
72	TBS119C12		700152	CP□□1204□□		95
70	TSBS919	2	700154	TC□□16T3□□	□19	140
	SBS919		700156	TP□□1603□□		

NOTE : Inserts are sold separately.

THROWAWAY JIG BORER TOOLS



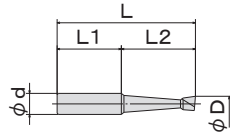
MIN. RANGE D	MODEL	CODE	L	L1	L2	φd	INSERT
8	JBM-1008	700160	50		30	10	CC□□03S1□□
10	-1010	700161	60	20	40		TP□□0802□□
12	-1012	700162	70		50		TP□□1102□□
15	-1015	700163	79	19	60		TP□□1102□□
18	-1018	700164					TP□□1102□□
8	JBM-1608	700165	65		35	16	CC□□0602□□
10	-1610	700166	75	30	45		TP□□0802□□
12	-1612	700167	85		55		TP□□0802□□
15	-1615	700168	95		65		TP□□0802□□
18	-1618	700169					TP□□1102□□
21	-1621	700170	96	26	70		TP□□1102□□

NOTE : Inserts are sold separately.

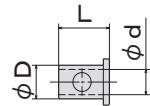


JIG BORER TOOLS • COLLET

JIG BORER TOOLS



COLLET



TYPE	MIN. RANGE D	φd	L1	For Through hole				For Blind hole			
				MODEL	CODE	L	L1	MODEL	CODE	L	L1
Carbide Tool	3	8	25	101A	700341	39	14	101B	700361	39	14
	6			102A	700342	51.5	26.5	102B	700362	51.5	26.5
	10			103A	700343	65.5	40.5	103B	700363	65.5	40.5
	15			104A	700344	69	44	104B	700364	69	44
	3			151A	700345	60	20	151B	700365	60	20
	6	12	40	152A	700346	70	30	152B	700366	70	30
	10			153A	700347	75	35	153B	700367	75	35
	15			154A	700348	85	45	154B	700368	85	45

MODEL	CODE	φd	φD	L
SCP10-6	35650	6	10	17.5
SCP10-8	35652	8		
SCP16-8	35654	8	16	25
SCP16-10	35656	10		
SCP16-12	35658	12		



THROWAWAY TIP for FIRSTCUT

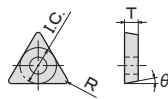


Fig. 1

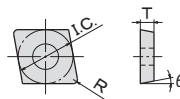


Fig. 2

STEEL		CAST IRON		SUS		ALUMINIUM		DA		CBN		Fig.	ISO CODE	I.C.	T	R	θ	BORING HEAD	SCREW	DRIVER
MODEL	CODE	MODEL	CODE	MODEL	CODE	MODEL	CODE	MODEL	CODE	MODEL	CODE									
NFT-TC16-ST	34500	NFT-TC16-CS	34508	NFT-TC16-SU	34516							1	TC**16T304	9.525	3.97	0.4	FCH70N~FCN290N	MS4011A	TRX15	
NFT-CC03-ST	34501	NFT-CC03-CS	34509	NFT-CC03-SU	34517	NFT-CC03-AL	34524					2	CC**03X102	3.5	1.39	0.2	7°	FCH1NJ	TS16	TRX6
NFT-CC06-ST	34502	NFT-CC06-CS	34510	NFT-CC06-SU	34518	NFT-CC06-AL	34525	NFT-CC06-DA	34528	NFT-CC06-BN	34533		CC**060202	6.35	2.38		FCH2NJ			
NFT-CC12-ST	34503	NFT-CC12-CS	34511	NFT-CC12-SU	34519								CC**120404	12.7	4.76		FCH70N~FCN290N	MS5011A	TRX20	
NFT-TP08-ST	34504	NFT-TP08-CS	34512	NFT-TP08-SU	34520	NFT-TP08-AL	34526	NFT-TP08-DA	34529	NFT-TP08-BN	34534	1	TP**080204	4.76	2.38	0.4	11°	FCH25N~FCH55N, FCH1NJ, FCH2NJ	CHN-20043-R	TRX6
NFT-TP11-ST	34505	NFT-TP11-CS	34513	NFT-TP11-SU	34521	NFT-TP11-AL	34527	NFT-TP11-DA	34530	NFT-TP11-BN	34535		TP**110204	6.35				FCH1NJ, FCH2NJ	CHN-25056-R	TRX8
NFT-TP16-ST	34506	NFT-TP16-CS	34514	NFT-TP16-SU	34522			NFT-TP16-DA	34531	NFT-TP16-BN	34536		TP**160304	9.525	3.18			FCH70N~FCN290N	MS4011A	TRX15
NFT-CP12-ST	34507	NFT-CP12-CS	34515	NFT-CP12-SU	34523							2	CP**120404	12.7	4.76		M4×15L(全糸)			

NOTE : 1. Inserts are available in 10 pcs boxes.

BT series

HSK series

ST series

Versatile Tool

Cutting Tool

Accessories