

FIG.1

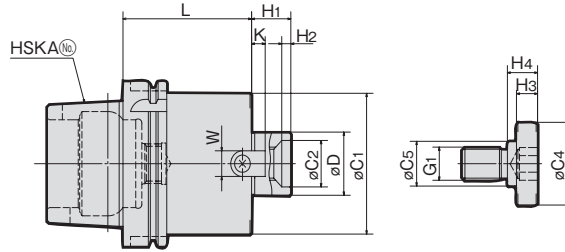


FIG.2

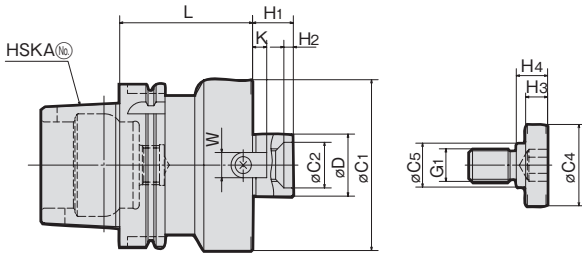
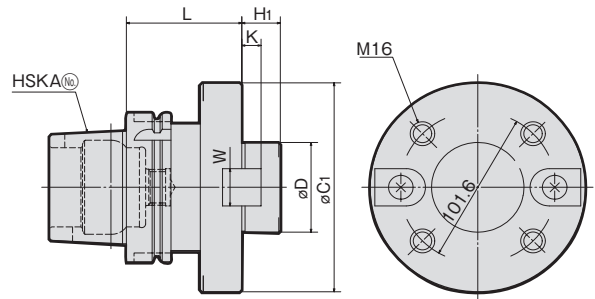


FIG.3



MODEL	CODE	FIG.	øD(h6)	L	øC1	øC2	H1	H2	KEY		G1	CLAMP BOLT				N/W (kg)
									W	K		øC4	øC5	H3	H4	
HSKA50	-FMA22.225-045	1	22.225	45	40	—	18	—	8.0	4	M8	20	15	7	9	0.6
	-FMA25.4 -060	2	25.4	60	50	—	22	—	9.5	5	M12	33	23	10	12	0.8
HSKA63	-FMA25.4 -060	1	25.4	60	50	—	22	—	9.5	5	M12	33	23	10	12	1.2
	-FMA31.75 -060	2	31.75		60	24	30	6	12.7	7	M16	40	23		16	1.4
	-FMA38.1 -060		320664		38.1	80	28		34	15.9	9	M20	50	27	14	20
HSKA100	-FMA25.4 -060	1	25.4	60	50	—	22	—	9.5	5	M12	33	23	10	12	2.5
	-FMA31.75 -060		350662		31.75	60	24	30	6	12.7	7	M16	40		23	16
	-FMA38.1 -060		350664		38.1	80	28	34		15.9	9	M20	50	27	14	20
	-FMA50.8 -075	2	50.8	75	100	38	36	10	19.05	10	M24	65	37	14	24	4.9
	-FMA47.625-075	3	47.625		128.6	—	38	—	25.4	12.5	—	—	—		—	—

NOTE : 1. Coolant pipe is included.

ORDERING EXAMPLE

① HSKA63 - FMA ② 25.4 - ③ 060 ④

- ① Shank Size
- ② Name
- ③ øD
- ④ G.L. Length

FIG.1

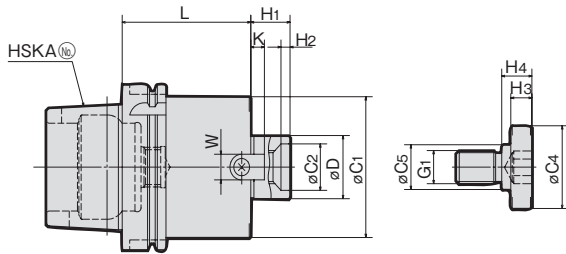


FIG.2

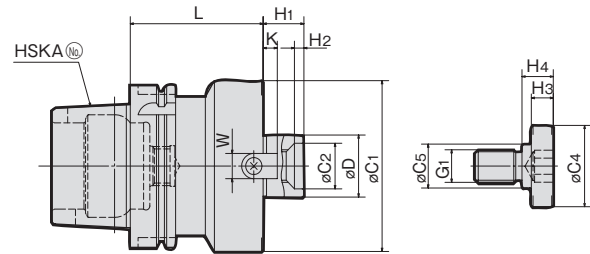


FIG.3

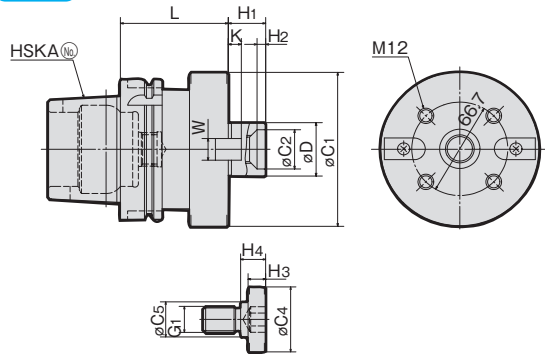
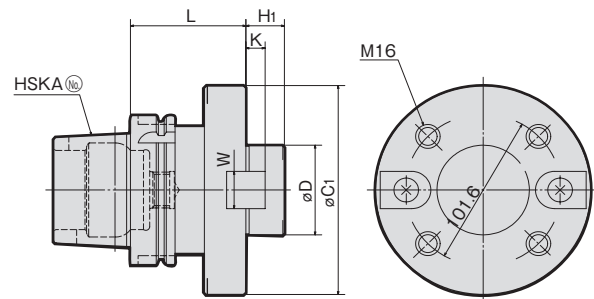


FIG.4



MODEL	CODE	FIG.	øD(h6)	L	øC1	øC2	H1	H2	KEY		G1	CLAMP BOLT				N/W (kg)	
									W	K		øC4	øC5	H3	H4		
HSKA63	-FMB25.4 -060	2	25.4	60	80	—	26	—	9.5	5	M12	33	23	10	12	1.7	
	-FMB38.1 -060		320672		38.1	85		28	6	15.9	9	M20	50	27	14	20	1.8
	-FMB27 -060		320676		27	80		—	—	12	6	M12	33	23	10	12	1.7
	-FMB40 -060				40	85		28	6	16	8.5	M20	50	27	14	20	1.8
HSKA100	-FMB25.4 -060	1	25.4	60	80	—	26	—	9.5	5	M12	33	23	10	12	2.9	
	-FMB38.1 -060	350684	38.1	75	110	28		6	15.9	9	M20	50	27	14	20	3.5	
	-FMB38.1F-075			110	28	6		15.9	9	M20	50	27	14	20	4.8		
	-FMB27 -060	350686	27	60	80	—		—	12	6	M12	33	23	10	12	2.9	
	-FMB40 -060		350262	40	85	28		6	16	8.5	M20	50	27	14	20	3.5	
	-FMB40F -075	350265	3	40	75	110		28	6	16	8.5	M20	50	27	14	20	4.8
-FMB60 -075	350692	4	60	140	—	25	—	25.4	12.5	—	—	—	—	—	6.8		

NOTE : 1. Coolant pipe is included.
2. For Sandvik and Seco cutters.

ORDERING EXAMPLE

①	②	③	④
HSKA63	-FMB	38.1	-060
① Shank Size	② Name	③ øD	④ G.L. Length

FIG.1

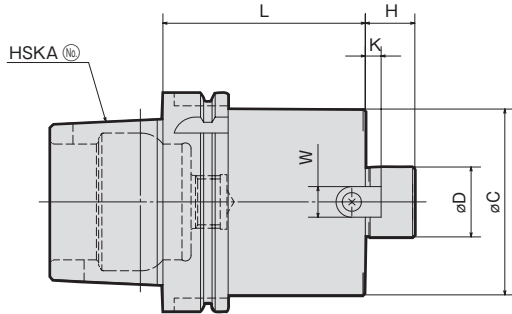
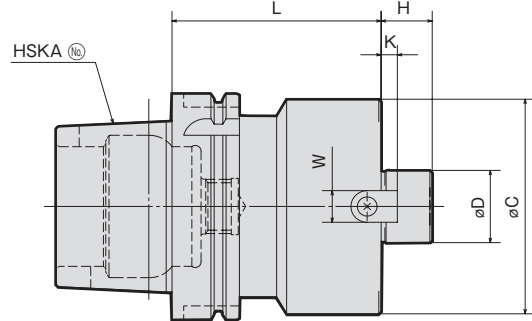


FIG.2



MODEL	CODE	FIG.	øD(h6)	L	øC	H	KEY		CLAMP BOLT	N/W (kg)	
							W	K			
HSKA63	-FMC25.4-060	320680	25.4	60	70	20	9.5	5	M12 × 35L	1.5	
	-FMC38.1-060	320682	38.1		85	22	15.9	7	M16 × 40L	0.8	
	-FMC22 -060	320684	1		22	45	18	10	5	M10 × 30L	1.1
	-FMC27 -060	320686	2		27	70	20	12	6	M12 × 35L	1.5
	-FMC32 -060		2		32	85	22	14	7	M16 × 40L	1.8
HSKA100	-FMC25.4-060		25.4	60	70	20	9.5	5	M12 × 35L	2.9	
	-FMC38.1-060		38.1		85	22	15.9	7	M16 × 40L	3.5	
	-FMC22 -060	350704	1		22	45	18	10	5	M10 × 30L	2.4
	-FMC27 -060		27		70	20	12	6	M12 × 35L	3.0	
	-FMC32 -060		32		85	22	14	7	M16 × 40L	3.4	

NOTE: 1. Coolant pipe is included.
2. For Sandvik and Seco cutters.

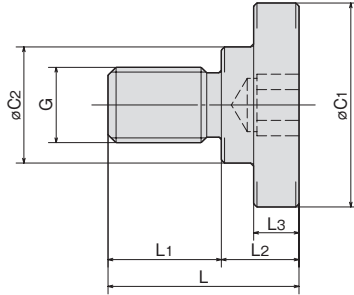
ORDERING EXAMPLE

① HSKA63 - ② FMC ③ 22 - ④ 060

- ① Shank Size
- ② Name
- ③ øD
- ④ G.L. Length



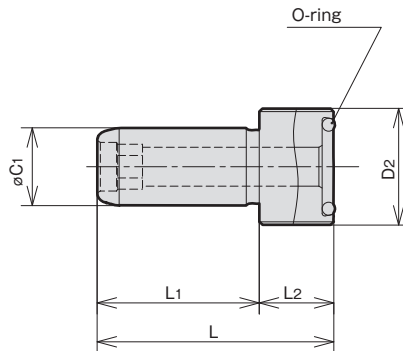
CLAMP BOLT FOR FACE MILL ARBOR



MODEL	CODE	$\phi C1$	$\phi C2$	L	L1	L2	L3	G	ARBOR CODE
MBA - M 8	49771	20	15	23	14	9	7	M 8×P1.25	FMA22.225 SMA16
MBA - M10	49772	28	18	27	16	11	9	M10×P1.5	SMA22 SMB22.225
MBA - M12	49773	33	23	30	18	12	10	M12×P1.75	FMA,B25.4 FMB27 SMA27
MBA - M16	49774	40	23	40	24	16	10	M16×P2.0	FMA31.75 SMA32 SMB31.75
MBA - M20	49775	50	27	50	30	20	14	M20×P2.5	FMA,B38.1 FMB40 SMA40 SMB38.1
MBA - M24	49776	65	37	59	35	24	14	M24×P3.0	FMA50.8



< HSK SHANK > COOLANT PIPE



MODEL	CODE	HSK No.	D1	D2	L	L1	L2	O-ring
CLP-032	25180	HSK32	6	M10×1.0	26	20.5	5.5	P4
CLP-040	25181	HSK40	8	M12×1.0	29.5	22	7.5	P6
CLP-050	25182	HSK50	10	M16×1.0	33	23.5	9.5	P9
CLP-063	25183	HSK63	12	M18×1.0	36.5	25	11.5	P11
CLP-080	25184	HSK80	14	M20×1.5	40	26.5	13.5	P12
CLP-100	25185	HSK100	16	M24×1.5	44	28.5	15.5	P15

ORDERING EXAMPLE

① **CLP** - ② **032**

- ① Name
- ② HSK No.