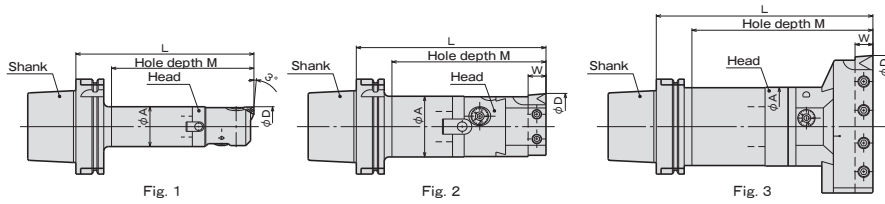
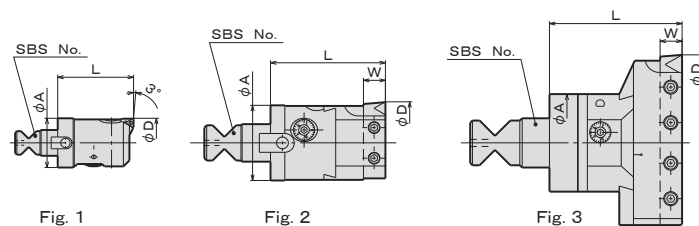


▶▶▶ Thru-the-tool Coolant Available



RANGE (D)	MODEL	Fig	CODE	SHANK	HEAD	BORING TOOL	INSERT	L	M	φA	W	N/W (kg)	
φ25~32	-FIC25N-130-S	1	321500	HSKA63	-SBS1-120	FCH25N	—	TP□□0802□□	130	95	24	—	1.3
φ32~44 注7)	-FIC32N-155-S		321502		-SBS2-135	FCH32N			155	120	31		1.6
φ44~57	-FIC44N-155-S		321504		-SBS3-135	FCH44N			150	115	42		2.3
φ55~73	-FIC55N-150-S		321506		-SBS4-135	FCH55N			150	115	54		3.1
φ70~140	-FIC70N-200-S	2	321508	-SBS5-165	FCH70N	TBS119C12 SBS919	CP□□1204□□ TP□□1603□□	200	165	64	□19	5.3	
φ90~160	-FIC90N-250-S		321510	-SBS6-200	FCH90N	TBS919 TSBS919	CC□□1204□□ TC□□16T3□□	250	215	83		9.7	
φ25~32	-FIC25N-160-S	1	351300	HSKA100	-SBS1-150	FCH25N	—	TP□□0802□□	160	114	24	—	3.0
φ32~44 注7)	-FIC32N-185-S		351302		-SBS2-165	FCH32N			185	139	31		3.5
φ44~57	-FIC44N-185-S		351304		-SBS3-165	FCH44N			245	199	42		4.2
φ55~73	-FIC44N-245-S		351306		-SBS3-225	FCH44N			180	134	54		4.8
φ55~73	-FIC55N-180-S	1	351308	-SBS4-165	FCH55N	—	TP□□0802□□	255	209	54	—	5.1	
φ55~73	-FIC55N-255-S		351310	-SBS4-240	FCH55N			300	254	64		6.3	
φ70~140	-FIC55N-300-S	2	351312	-SBS4-285	FCH55N	—	TP□□0802□□	200	154	64	—	7.1	
φ70~140	-FIC70N-200-S		351314	-SBS5-165	FCH70N			275	229	83		6.7	
φ70~140	-FIC70N-275-S	2	351316	-SBS5-240	FCH70N	TBS119C12 SBS919	CP□□1204□□ TP□□1603□□	275	229	64	□19	8.6	
φ70~140	-FIC70N-365-S		351318	-SBS5-330	FCH70N	TBS919 TSBS919	CC□□1204□□ TC□□16T3□□	365	319	83		10.8	
φ90~160	-FIC90N-235-S	2	351320	-SBS6-185	FCH90N	—	TP□□0802□□	235	189	64	—	9.5	
φ90~160	-FIC90N-290-S		351322	-SBS6-240	FCH90N			290	244	83		12.5	
φ90~160	-FIC90N-380-S	2	351324	-SBS6-330	FCH90N	—	TP□□0802□□	380	334	83	□19	16.2	
φ90~160	-FIC150N-225-S		351326	-SBS6-185	FCH150N			225	179	83		10.3	
φ150~220	-FIC150N-280-S	3	351328	-SBS6-240	FCH150N	TBS119C12 SBS919	TP□□1603□□ CC□□1204□□	280	234	83	□19	13.3	
φ150~220	-FIC150N-370-S		351330	-SBS6-330	FCH150N	TBS919 TSBS919	CC□□1204□□ TC□□16T3□□	370	324	83		17.0	
φ220~290	-FIC220N-225-S	3	351332	-SBS6-185	FCH220N	—	TP□□0802□□	225	179	83	—	11.6	
φ220~290	-FIC220N-280-S		351334	-SBS6-240	FCH220N			280	234	83		14.6	
φ220~290	-FIC220N-370-S	3	351336	-SBS6-330	FCH220N	—	TP□□0802□□	370	324	83	—	18.3	
φ220~290	-FIC290N-225-S		351338	-SBS6-185	FCH290N			225	179	83		12.9	
φ290~360	-FIC290N-280-S	3	351340	-SBS6-240	FCH290N	—	TP□□0802□□	280	234	83	—	15.9	
φ290~360	-FIC290N-370-S		351342	-SBS6-330	FCH290N			370	324	83		19.6	

FIRSTCUT HEAD



RANGE (D)	MODEL	Fig	CODE	SLIDE DISTANCE	BORING TOOL	INSERT	SBS No.	L	φA	W	N/W (kg)
φ25~32	FCH25N	1	700130	3.5	—	TP□□0802□□	SBS1	47	24	—	0.2
φ32~44 注7)	FCH32N		700131	5.0			SBS2	57	31		0.4
φ44~57	FCH44N		700132	6.5			SBS3	64	42		0.7
φ55~73	FCH55N		700133	9.0			SBS4	68	54		1.2
φ70~140	FCH70N	2	700134	20	TBS119C12 SBS919	CP□□1204□□ TP□□1603□□	SBS5	100	64	□19	2.6
φ90~160	FCH90N		700135				SBS6	122	83		4.7
φ150~220	FCH150N	3	700136	20	TBS919 TSBS919	CC□□1204□□ TC□□16T3□□	SBS6	112	83	□19	5.5
φ220~290	FCH220N		700137				6.8				
φ290~360	FCH290N	700138	8.1								

- NOTE: 1. A coolant pipe is installed(fixed type).
 2. Adjustable in φ0.01mm per scale
 3. Insert is in face with drive key.
 4. Through the tool coolant is standard.
 5. Inserts over than FIC70 are square shank tool.
 6. Inserts and bites are sold separately.
 7. The max. machining range means when installed spacer(included).
 Without spacer, max range is φ42mm.

ORDERING EXAMPLE					
①	②	③	④	⑤	⑥
HSKA100	-FIC	70	N-	200	-S
① Shank Size	② Holder's Name	③ Min. φD	④ New Type	⑤ G.L. Length	⑥ Set



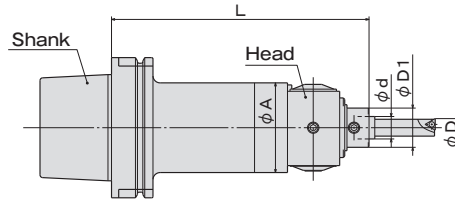
ACCESSORIES

▶ P.136 THROWAWAY SQUARE SHANK TOOLS



ACCESSORIES

▶ P.137 EXTENSION, REDUCTION



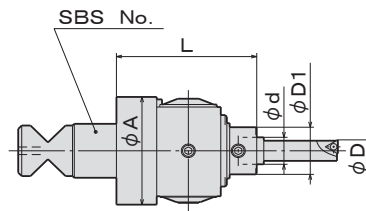
RANGE (D)	MODEL	CODE	SHANK	HEAD	L	φA	φd	φD1	DIAL CALIBRATION	COLLET	N/W (kg)	
φ3~23	HSKA63	-FIC1NJ-151-S	HSKA63	-SBS3-135	FCH1NJ	151	46	10	18	φ0.005	SSCP10-□	2.2
φ3~28		-FIC2NJ-180-S		-SBS5-165	FCH2NJ	180	64	16	28	φ0.010	SSCP16-□	4.5
φ3~23	HSKA100	-FIC1NJ-181-S	HSKA100	-SBS3-165	FCH1NJ	181	46	10	18	φ0.005	SSCP10-□	4.1
φ3~28		-FIC2NJ-180-S		-SBS5-165	FCH2NJ	180	64	16	28	φ0.010	SSCP16-□	5.9

NOTE: 1. A coolant pipe is installed (fixed type).
 2. Insert is in face with drive key.
 3. Through the tool coolant is standard.
 4. Inserts and bites and collets are sold separately.

ORDERING EXAMPLE

①	②	③	④	⑤	⑥
HSKA100	-FIC	70	N	200	-S
① Shank Size					
② Holder's Name					
③ Min. φD					
④ New Type					
⑤ G.L. Length					
⑥ Set					

FIRSTCUT HEAD [Small-hole Boring Tool]



RANGE (D)	MODEL	CODE	SBS No.	L	φA	φd	φD1	DIAL CALIBRATION	SLIDE DISTANCE	COLLET	N/W (kg)
φ3~23	FCH1NJ	700139	SBS3	60	46	10	18	φ0.005	2.5	SSCP10-□	0.6
φ3~28	FCH2NJ	700140	SBS5	80	64	16	28	φ0.010	3.5	SSCP16-□	1.8

NOTE: 1. Through the tool coolant is standard.
 2. Inserts and bites and collets are sold separately.



ACCESSORIES

▶ P.136 JIG BORER TOOLS, COLLET, INSERTS



ACCESSORIES

▶ P.137 EXTENSION, REDUCTION

ACCESSORIES for <BORING SYSTEM>FIRSTCUT



THROWAWAY SQUARE SHANK TOOLS • THROWAWAY JIG BORER TOOLS

THROWAWAY SQUARE SHANK TOOLS

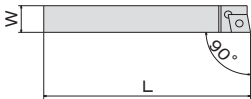


Fig. 1

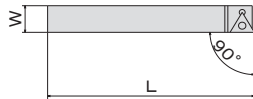
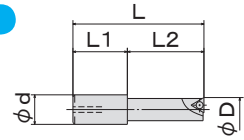


Fig. 2

MIN. RANGE D	MODEL	Fig	CODE	INSERT	W	L
70	TBS919	1	700150	CC□□1204□□	□19	140
72	TBS119C12		700152	CP□□1204□□		95
70	TSBS919	2	700154	TC□□16T3□□	□19	140
	SBS919		700156	TP□□1603□□		

NOTE : Inserts are sold separately.

THROWAWAY JIG BORER TOOLS



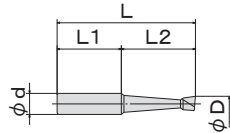
MIN. RANGE D	MODEL	CODE	L	L1	L2	φd	INSERT
8	JBM-1008	700160	50		30	10	CC□□03S1□□
10	-1010	700161	60	20	40		TP□□0802□□
12	-1012	700162	70		50		TP□□1102□□
15	-1015	700163	79	19	60		CC□□0602□□
8	JBM-1608	700165	65		35	16	CC□□0602□□
10	-1610	700166	75	30	45		TP□□0802□□
12	-1612	700167	85		55		TP□□1102□□
15	-1615	700168	95		65		TP□□1102□□
18	-1618	700169	96	26	70		
21	-1621	700170					

NOTE : Inserts are sold separately.

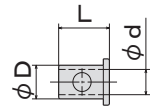


JIG BORER TOOLS • COLLET

JIG BORER TOOLS



COLLET



TYPE	MIN. RANGE D	φd	L1	For Through hole				For Blind hole			
				MODEL	CODE	L	L1	MODEL	CODE	L	L1
Carbide Tool	3	8	25	101A	700341	39	14	101B	700361	39	14
	6			102A	700342	51.5	26.5	102B	700362	51.5	26.5
	10			103A	700343	65.5	40.5	103B	700363	65.5	40.5
	15			104A	700344	69	44	104B	700364	69	44
	3			151A	700345	60	20	151B	700365	60	20
	6			152A	700346	70	30	152B	700366	70	30
	10	153A	700347	75	35	153B	700367	75	35		
	15	154A	700348	85	45	154B	700368	85	45		

MODEL	CODE	φd	φD	L
SCP10-6	35650	6	10	17.5
SCP10-8	35652	8		
SCP16-8	35654	8	16	25
SCP16-10	35656	10		
SCP16-12	35658	12		



THROWAWAY TIP for FIRSTCUT

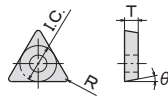


Fig. 1

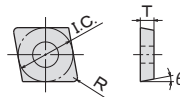


Fig. 2

STEEL		CAST IRON		SUS		ALUMINIUM		DA		CBN		Fig.	ISO CODE	I.C.	T	R	θ	BORING HEAD	SCREW	DRIVER
MODEL	CODE	MODEL	CODE	MODEL	CODE	MODEL	CODE	MODEL	CODE	MODEL	CODE									
NFT-TC16-ST	34500	NFT-TC16-CS	34508	NFT-TC16-SU	34516							1	TC**16T304	9.525	3.97	0.4	FCH70N~FCN290N	MS4011A	TRX15	
NFT-CC03-ST	34501	NFT-CC03-CS	34509	NFT-CC03-SU	34517	NFT-CC03-AL	34524					2	CC**03X102	3.5	1.39	0.2	7°	FCH1NJ	TS16	TRX6
NFT-CC06-ST	34502	NFT-CC06-CS	34510	NFT-CC06-SU	34518	NFT-CC06-AL	34525	NFT-CC06-DA	34528	NFT-CC06-BN	34533		CC**060202	6.35	2.38		FCH2NJ			
NFT-CC12-ST	34503	NFT-CC12-CS	34511	NFT-CC12-SU	34519								CC**120404	12.7	4.76		FCH70N~FCN290N	MS5011A	TRX20	
NFT-TP08-ST	34504	NFT-TP08-CS	34512	NFT-TP08-SU	34520	NFT-TP08-AL	34526	NFT-TP08-DA	34529	NFT-TP08-BN	34534	1	TP**080204	4.76	2.38	0.4	11°	FCH25N~FCH55N, FCH1NJ, FCH2NJ	CHN-20043-R	TRX6
NFT-TP11-ST	34505	NFT-TP11-CS	34513	NFT-TP11-SU	34521	NFT-TP11-AL	34527	NFT-TP11-DA	34530	NFT-TP11-BN	34535		TP**110204	6.35				FCH1NJ, FCH2NJ	CHN-25056-R	TRX8
NFT-TP16-ST	34506	NFT-TP16-CS	34514	NFT-TP16-SU	34522			NFT-TP16-DA	34531	NFT-TP16-BN	34536		TP**160304	9.525	3.18			FCH70N~FCN290N	MS4011A	TRX15
NFT-CP12-ST	34507	NFT-CP12-CS	34515	NFT-CP12-SU	34523							2	CP**120404	12.7	4.76		M4×15L(全糸)			

NOTE : 1. Inserts are available in 10 pcs boxes.

BT series

HSK series

ST series

Versatile Tool

Cutting Tool

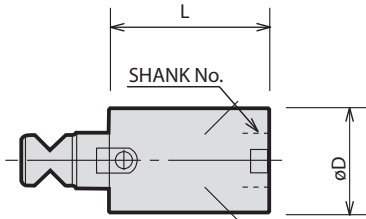
Accessories



EXTENSION



For deeper holes.



MODEL	CODE	SHANK No.	øD	L
TEX1 - 40	32610	1	24	40
TEX2 - 45	32620	2	31	45
TEX3 - 50	32630	3	42	50
TEX3 - 65	32631			65
TEX4 - 65	32640	4	54	65
TEX4 - 90	32641			90
TEX5 - 75	32650	5	64	75
TEX5 - 105	32651			105
TEX6 - 75	32660	6	82	75
TEX6 - 105	32661			105

ORDERING EXAMPLE

① **TEX** ② **1** - ③ **40**

- ① Name
- ② Shank No.
- ③ L

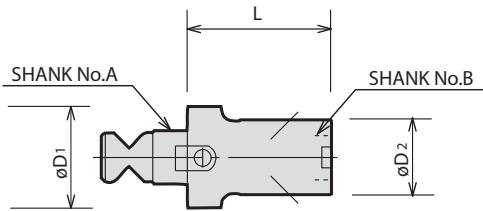
HSK series



REDUCTION



For using smaller heads.



MODEL	CODE	SHANK No.A	SHANK No.B	øD1	øD2	L
RE2X1 - 60	32720	2	1	31	24	60
RE2X1 - 90	32721					90
RE3X1 - 60	32730	3	2	42	31	60
RE3X1 - 90	32731					90
RE3X2 - 60	32735	4	1	54	24	60
RE3X2 - 90	32736					90
RE4X1 - 60	32740	5	3	64	31	60
RE4X1 - 90	32741					90
RE4X2 - 60	32743	6	4	82	42	60
RE4X2 - 90	32744					90
RE4X3 - 60	32746	3	2	54	31	60
RE4X3 - 90	32747					90
RE5X2 - 60	32750	4	3	64	42	60
RE5X2 - 105	32751					105
RE5X3 - 60	32753	5	4	82	54	60
RE5X3 - 105	32754					105
RE5X4 - 60	32756	6	5	82	64	60
RE5X4 - 105	32757					105
RE6X3 - 75	32760	3	2	54	31	75
RE6X3 - 90	32761					90
RE6X4 - 75	32763	4	3	64	42	75
RE6X4 - 90	32764					90
RE6X5 - 75	32766	5	4	82	54	75

ORDERING EXAMPLE

① **RE** ② **2×1** - ③ **60**

- ① Name
- ② Shank No. A×B
- ③ L