

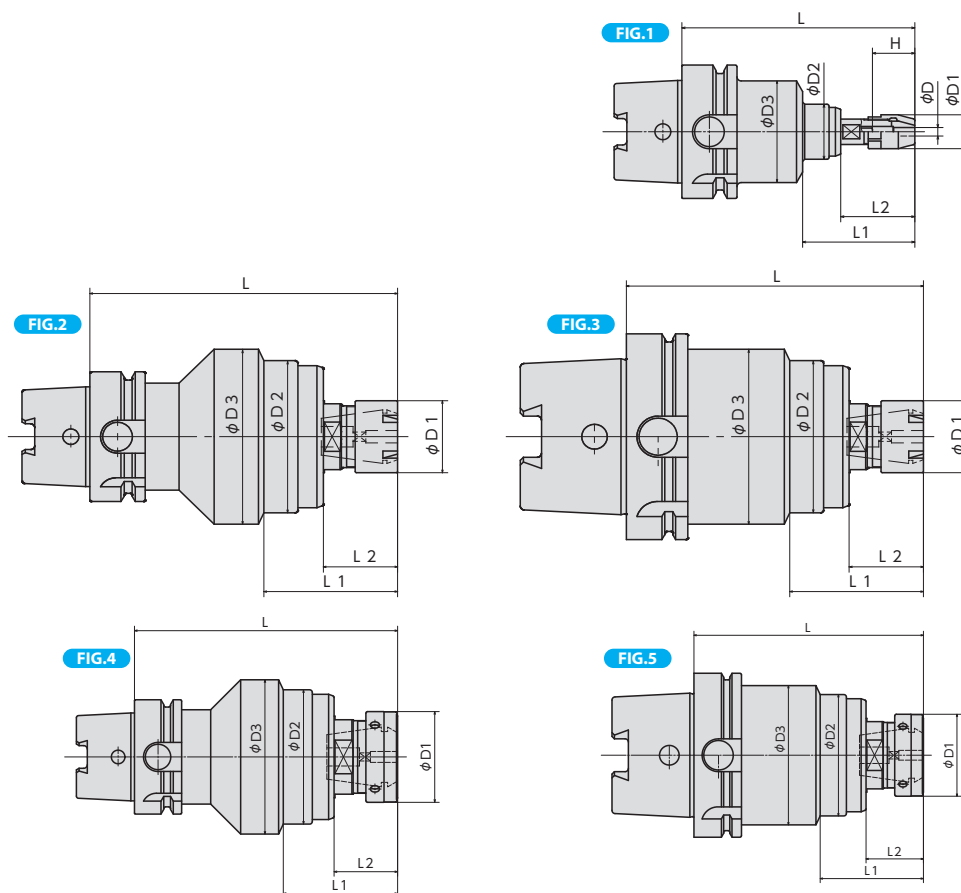
# SYNCHRO TAP HOLDER SYFN/SYFS

FEATURES p. 11-12

HSKA<sup>(No.)</sup>-SYFN/SYFS<sup>(No.)</sup>-L

▶▶▶ Thru-the-tool Coolant Available

▶▶▶ Thru-the-groove Coolant Available(Option)



Please use the tool having shank tolerance within h7 for SYFS type.

MODEL	CODE	FIG	φD	φD1	φD2	φD3	L	L1	L2	H	TAP SIZE	COLLET	
HSKA50	-SYFN12	-125 310001	4	-	36	51	62.5	125	54	30	-	M4~M12, No.8~U1/2 P1/8	CR13GBorGH
	-155 310002	155						84	60				
HSKA63	-SYFS02	-110 321282	1	3	16	26	48	110	53	35	22	M1, M1.6, M2, No.3, No.4 M3, No.5, No.6	-
	-SYFS03	-110 321284											
	-SYFN12	-115 321291	5	-	36	51	62.5	115	54	30	-	M4~M12, No.8~U1/2 P1/8	CR13GBorGH
		-145 321292						145	84	60			
	-SYFN16S	-145 321297	2	-	35	74	85	145	63	35	-	M4~M16, No.8~U5/8, P1/4	CR16GBorGH
		-175 321298						175	93	65			
		-205 321299						205	123	95			
		-145 321294						145	63	35			
	-SYFN20	-175 321295	4	-	50	74	85	175	93	65	-	M4~M20, U5/16~U5/8, P1/8~P3/8	CR20GBorGH
		-205 321296						205	123	95			
HSKA100	-SYFS02	-115 351081	1	3	16	26	48	115	53	35	22	M1, M1.6, M2, No.3, No.4 M3, No.5, No.6	-
	-SYFS03	-115 351082											
	-SYFN16S	-140 351107	3	-	35	74	85	140	63	35	-	M4~M16, No.8~U5/8, P1/4	CR16GBorGH
		-170 351108						170	93	65			
		-200 351109						200	123	95			
		-230 351110						230	153	125			
		-260 351111						260	183	155			
	-SYFN20	-140 351104	5	-	50	74	85	140	63	35	-	M4~M20, U5/16~U5/8, P1/8~P3/8	CR20GBorGH
		-170 351105						170	93	65			
		-200 351106						200	123	95			

- NOTE: 1. Each holder supplied with built-in coolant pipe. (Stationary type)  
 2. Collet and chuck wrench are sold separately.  
 3. Applicable to synchronized machines only.  
 4. Thru-the-groove coolant type is manufactured to orders.

### ORDERING EXAMPLE

①	②	③	④
HSKA63	-SYFN	20	-145
① Shank Size	② Name	③ Type No	④ G.L. Length



ACCESSORIES

▶ P.124,125 COLLETS



ACCESSORIES

▶ P.126,128 NUT, CHUCK WRENCH

BT series

HSK series

ST series

Versatile Tool

Cutting Tool

Accessories



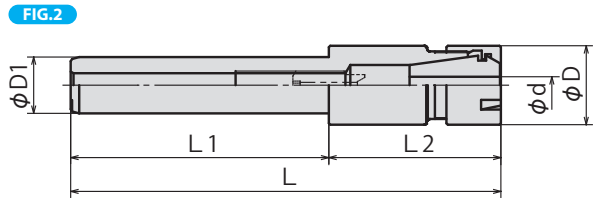
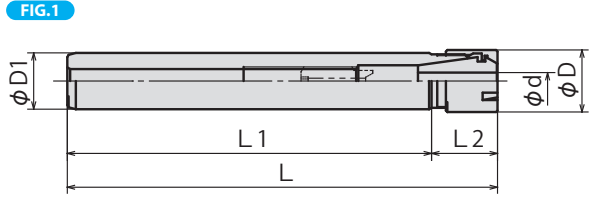
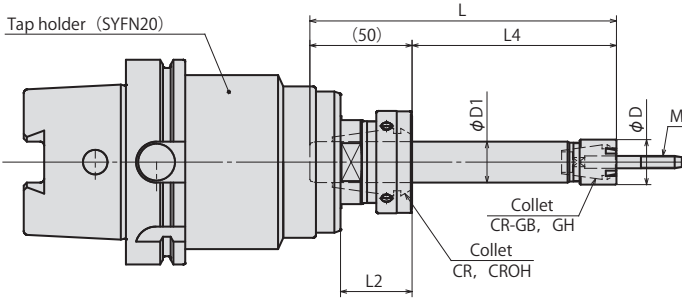
# COLLET CHUCK (SLIM TYPE)

FEATURES P. 14

**ST<sup>⊙</sup>-SSC<sup>⊙</sup>MAX-L<sup>⊙</sup>**

▶▶▶ Thru-the-tool Coolant Available

▶▶▶ Thru-the-groove Coolant Available



MODEL	CODE	FIG	φD	φD1	L	L1	L2	L3	L4	Suitable holder	Suitable collet	TAP SIZE	Collet for suitable collet	NUT	
ST16	SSC07-100	30377	1	16	16	100	83	17	50	SYFN20	CR20-16 CROH20-16	M2~M6, No.3~ U1/4	CR07-d CROH07-d	ER11MN	
	SSC07-150	30378				150	133		(min40)						100
	SSC07-200	30379				200	183		150						
ST20	SSC10-100	30831	1	22	20	100	77	23	50	SYFN20	CR20-20 CROH20-20	M4~M10, No.8~ U7/16	CR10GB CR10GH	ER16MN	
	SSC10-150	30832				150	127		100						
	SSC10-200	30833				200	177		150						
	SSC10-250	30834				250	227		200						
	SSC13-150	30835	2	28	20	150	90	60	100			M4~M12, No.8~ U1/2,P1/8	CR13GB CR13GH	ER20MN	
	SSC13-200	30836				200	140		150						

NOTE: 1. Collet and chuck wrench are sold separately.  
2. CROH collet is used for thru-the-tool coolant application.

**ORDERING EXAMPLE**

① **HSKA63** - ② **SYFN** ③ **20** - ④ **145**

- ① Shank Size
- ② Name
- ③ Type No
- ④ G.L. Length



ACCESSORIES

▶ **P.122-125 COLLETS**



ACCESSORIES

▶ **P.128 NUT, ADJUST SCREW, CHUCK WRENCH**

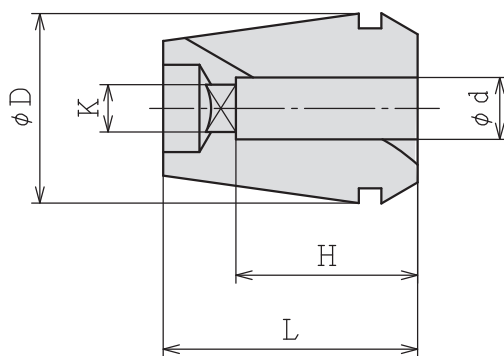
ACCESSORIES for COLLET CHUCK



# CR TAP COLLET

CR<sup>No</sup>GB-D

CR collet with square hole for shank end of tap (for synchro tap).



MODEL	CODE	TAP SIZE	$\phi d$	K	H	$\phi D$	L	TAP HOLDER	COLLET CHUCK
CR10GB	-M4	84700	M4	5	4	16	27	-	RSC10
	-M5	84702	M5	5.5	4.5				
	-M6	84704	M6	6	4.5				
	-M8	84706	M8	6.2	5				
	-M10	84708	M10	7	5.5				
	-P1/8	84710	P1/8	8	6				
CR13GB	-M4	84712	M4	5	4	20	31	SYFN12	RSC13
	-M5	84714	M5	5.5	4.5				
	-M6	84716	M6	6	4.5				
	-M8	84718	M8	6.2	5				
	-M10	84720	M10	7	5.5				
	-P1/8	84722	P1/8	8	6				
	-M12	84724	M12	8.5	6.5				
CR16GB	-M4	84726	M4	5	4	25	35	SYFN16S	RSC16
	-M5	84728	M5	5.5	4.5				
	-M6	84730	M6	6	4.5				
	-M8	84732	M8	6.2	5				
	-M10	84734	M10	7	5.5				
	-P1/8	84736	P1/8	8	6				
	-M12	84738	M12	8.5	6.5				
	-M14	84740	M14	10.5	8				
	-P1/4	84742	P1/4	11	9				
	-M16	84744	M16	12.5	10				
	-P3/8	84746	P3/8	14	11				
CR20GB	-M4	84748	M4	5	4	32	40	SYFN20	RSC20
	-M5	84750	M5	5.5	4.5				
	-M6	84752	M6	6	4.5				
	-M8	84754	M8	6.2	5				
	-M10	84756	M10	7	5.5				
	-P1/8	84758	P1/8	8	6				
	-M12	84760	M12	8.5	6.5				
	-M14	84762	M14	10.5	8				
	-P1/4	84764	P1/4	11	9				
	-M16	84766	M16	12.5	10				
	-P3/8	84768	P3/8	14	11				
	-M18	84770	M18	14	11				
	-M20	84772	M20	15	12				

NOTE : 1. Above table is for a tap of JIS standard shank.  
2. Run-out accuracy is subject to ordinary (STD) class.

BT series

HSK series

ST series

Versatile Tool

Cutting Tool

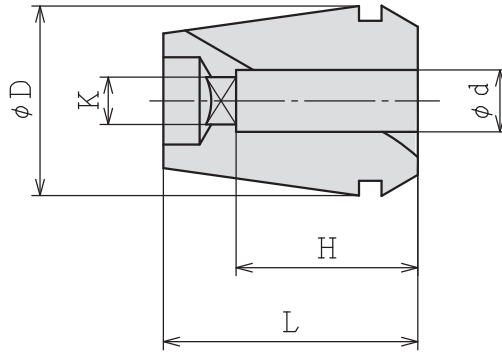
Accessories



# OIL HOLE CR TAP COLLET

CR<sup>10</sup>GH-<sup>⊕</sup>

OH-type collet with square hole is for high-pressure centre-through coolant feeding (for synchro tapping) .



MODEL	CODE	TAP SIZE	φd	K	H	φD	L	TAP HOLDER	COLLET CHUCK
CR10GH	-M6	84800	M6	6	4.5	16	27	-	RSC10
	-M8	84802	M8	6.2	5				
	-M10	84804	M10	7	5.5				
	-P1/8	84806	P1/8	8	6				
CR13GH	-M6	84808	M6	6	4.5	20	31	SYFN12	RSC13
	-M8	84810	M8	6.2	5				
	-M10	84812	M10	7	5.5				
	-P1/8	84814	P1/8	8	6				
	-M12	84816	M12	8.5	6.5				
CR16GH	-M6	84818	M6	6	4.5	25	35	SYFN16S	RSC16
	-M8	84820	M8	6.2	5				
	-M10	84822	M10	7	5.5				
	-P1/8	84824	P1/8	8	6				
	-M12	84826	M12	8.5	6.5				
	-M14	84828	M14	10.5	8				
	-P1/4	84830	P1/4	11	9				
	-M16	84832	M16	12.5	10				
CR20GH	-M6	84836	M6	6	4.5	32	40	SYFN20	RSC20
	-M8	84838	M8	6.2	5				
	-M10	84840	M10	7	5.5				
	-P1/8	84842	P1/8	8	6				
	-M12	84844	M12	8.5	6.5				
	-M14	84846	M14	10.5	8				
	-P1/4	84848	P1/4	11	9				
	-M16	84850	M16	12.5	10				
	-P3/8	84852	P3/8	14	11				
	-M18	84854	M18	14	11				
-M20	84856	M20	15	12					

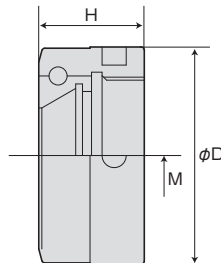
- NOTE :
- Above table is for a tap of JIS standard shank.
  - Run-out accuracy is subject to ordinary (STD) class.
  - In the case of OSG Corporation synchro tap, shank diameter, square end dimensions are different from others so that there is the case that you can not use it even if tap size is the same.
  - Gap-through collet is also available. Please order separately.

ACCESSORIES for COLLET CHUCK



# NUT FOR COLLET CHUCK

RSN (No.) - TYPE



for BT, ST

Through-Coolant use

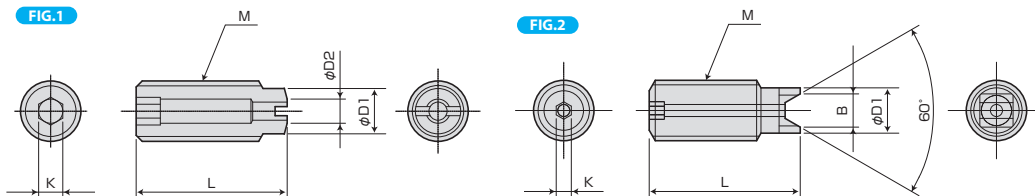
CODE	M	φD	H	CHUCK
RSN07NB(Ni) 30891	M16×1.0	24	11.5	RSC07
RSN10NB(Ni) 30892	M21×1.0	30	15.5	RSC10
RSN13NB(Ni) 30893	M26×1.0	36	17.5	RSC13
RSN16NB(Ni) 30894	M32×1.0	42	17.5	RSC16
RSN20NB(Ni) 30895	M40×1.0	50	17.5	RSC20

CODE	M	φD	H	CHUCK
RSN10NB-OH 30870	M21×1.0	30	15.5	RSC10
RSN13NB-OH 30871	M26×1.0	36	17.5	RSC13
RSN16NB-OH 30872	M32×1.0	42		RSC16
RSN20NB-OH 30873	M40×1.0	50		RSC20

Note: Single use of OH nut can not cope with the thru-the-tool coolant.



# ADJUST SCREW (For COLLET CHUCK)



MODEL	FIG	M	L	D1	D2	K	B	HOLDER
M6×20L-CTW 1)	1	M6×1.0	20	4.5	3	3	—	RSC07
RAS10-25-2.5 2)	2	M10×1.5	25	7.5	—	2.5	5.5	RSC10
RAS13-25-2.5 2)		M12×1.5		9.5			7.2	RSC13
RAS16-25-5 2)		M18×1.5		13.5			—	RSC16
RAS20-25-5 2)		M24×1.5		17.5		5	9.5	RSC20

Note 1: Drill less than φ3 cannot be used for adjustment protrusion in order to enter the coolant hole.

CTW is not in the two pieces shape

Note 2: Drill less than φ2 cannot be used for adjustment protrusion in order to enter the coolant hole.



# CHUCK WRENCH (For COLLET CHUCK)

CODE	CHUCK
FP25 35844	RSC07
FP30 35845	RSC10
FP35 35846	RSC13
FP42 35847	RSC16
FP50 35848	RSC20

BT series

HSK series

ST series

Versatile Tool

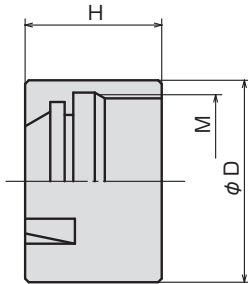
Cutting Tool

Accessories

ACCESSORIES for SLIM CHUCK



# NUT FOR SLIM CHUCK

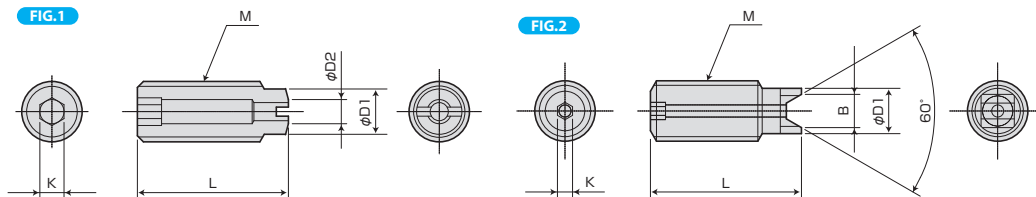


	CODE	M	øD	H	CHUCK
ER11MN	30924	M13×0.75	16	11.3	SSC07
ER16MN	30926	M19×1.0	22	18	SSC10
ER20MN	30928	M24×1.0	28	19	SSC13
ER25MN	30929	M30×1.0	35	20	SYFN16S

ER25MN is a nut for Synchro Tap Holder SYFN16S type, on page 57 and page 111.



# ADJUST SCREW (For SLIM CHUCK)



MODEL	FIG	M	L	D1	D2	K	B	HOLDER
M6×20L-CTW 1)	1	M6×1.0	20	4.5	3	3	—	SSC07
RAS10-25-2.5 2)	2	M10×1.5	25	7.5	—	2.5	5.5	SSC10
RAS13-25-2.5 2)		M12×1.5		9.5			7.2	SSC13

Note 1: Drill less than  $\phi 3$  cannot be used for adjustment protrusion in order to enter the coolant hole. CTW is not in the two pieces shape

Note 2: Drill less than  $\phi 2$  cannot be used for adjustment protrusion in order to enter the coolant hole.



# CHUCK WRENCH (For SLIM CHUCK)

	CODE	CHUCK
ER11MS	35861	SSC07
ER16MS	35863	SSC10
ER20MS	35865	SSC13
ER25MS	35867	SYFN16S

NOTE: ER25MS is a wrench for Synchro Tap Holder SYFN16S, type, on page 57 and page 111.