

FIG.1

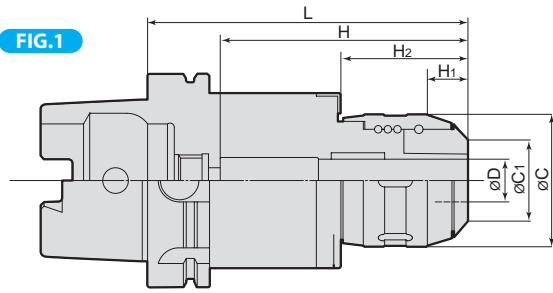
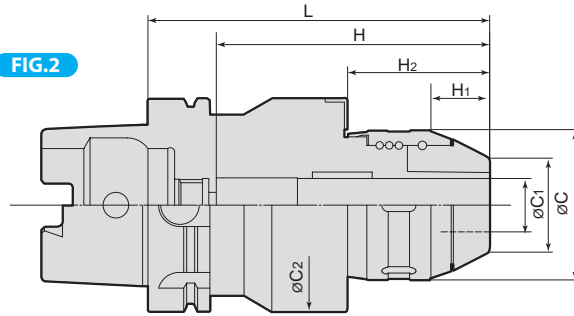


FIG.2



Cutter shank diameter should be h6 or better.

MODEL	STOCK	Fig	øD	L	H	øC	øC1	øC2	H1	H2	Min insert length	N/W (kg)
HSKA63	-HDU16- 140	△	16	140	112	62	38	82	14	54.5	57	
	-HDU20- 145	△										
HSKA100	-HDU16- 145	△	20	145	117	62	38	82	14	54.5	57	
	-HDU20- 150	△										
HSKA100	-HDU25- 160	△	25	160	128	70	44	100	27.5	66.5	85	
	-HDU32- 165	△										

- NOTE : 1. Coolant pipe is included.
 2. Please don't use with collets because it may destroy the inside of the holder.
 3. After 100 clamping cycles, or every 3month interval, please confirm clamping power of hydraulic portion.
 4. When you check clamping power of hydraulic portion, please use exclusive test bar (separately sold).

ORDERING EXAMPLE

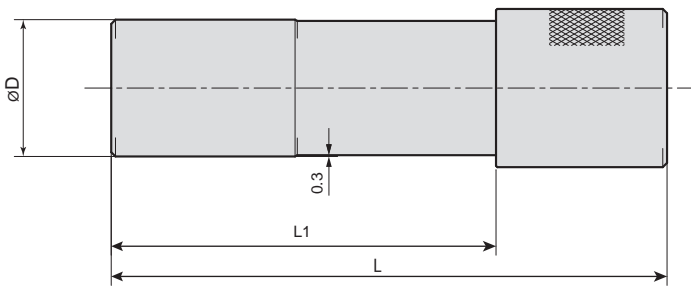
① HSKA63 - ② HDU ③ 32 - ④ 120

① Shank Size
 ② Holder's Name
 ③ Max. øD
 ④ G.L. Length

ACCESSORIES for Hy-Dual CHUCK



Tester for clamping power



MODEL	øD	L	L1	
TB	HDU16	16	110	57
	HDU20	20	110	70
	HDU25	25	125	85
	HDU32	32	130	90

ORDERING EXAMPLE

① TB - ② HDU16

① Holder's Name
 ② Chack Size



CHUCK WRENCH (For Hy-Dual CHUCK)

HOOK SPANNER		
CHUCK CODE	WRENCH CODE	
Hy-DUAL CHUCK		
HDU16,HDU20	FS58-62G	35853
HDU25	FS68-75G	35854
HDU32	FS80-90G	35855