

# MICRON CHUCK N series

FEATURES p.1-6

HSKA<sup>(No.)</sup>-HPC<sup>(D)</sup>N-L

FIG.1

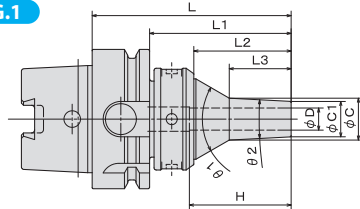
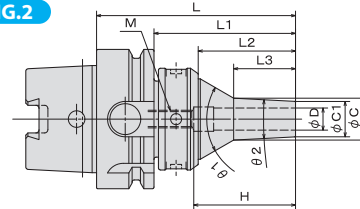


FIG.2



MODEL ø	CODE			FIG	øD	øC1	ø1	L	L1	L2	L3	H	Min insert length	Adjust		M	θ 1	θ 2	
	A	AA	G Type											MIN	MAX				
HSKA50	HPC03N-105	301000	301006	301012	1	3	9	10.4	105	79	44	27	20	-	-	-	80	3	
	HPC04N-105	301001	301007	301013		4	10	11.5											28
	HPC06N-105	301002	301008	301014		6	12	13.5											
	HPC08N-105	301003	301009	301015	2	8	14	15.5				29	50	35	35	50	M6		74
	HPC10N-105	301004	301010	301016		10	16	17.5											
	HPC12N-105	301005	301011	301017		12	18	21											
HSKA63	HPC03N-090	320920	320940	320960	1	3	9	10.4	90	64	44	27	20	-	-	-	80	3	
	HPC04N-090	320921	320941	320961		4	10	11.5											28
	HPC06N-090	320922	320942	320962		6	12	13.5											
	HPC08N-090	320923	320943	320963	2	8	14	15.5				29	50	35	35	45	M8		68
	HPC10N-090	320924	320944	320964		10	16	17.5											
	HPC12N-090	320925	320945	320965		12	18	21											

BT series

HSK series

ST series

Versatile Tool

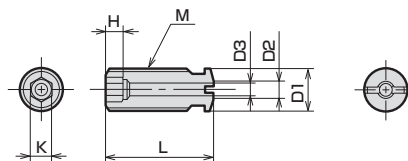
Cutting Tool

Accessories

ACCESSORIES for MICRON CHUCK H series M series



# ADJUST SCREW (For MICRON CHUCK H series, M series)



MODEL	CODE	M	L	D1	D2	D3	K	H	MICRON CHUCK
AS17-2-M5-CTW	17672	M5×0.8	17	5	3	2	2.5	3	HPC06H
AS17-2-M6-CTW	17676	M6×1.0	17	6			3		HPC07H
AS22-2-M6-CTW	17678		22	8	5	4	4	5	HPC08H,HPC08M
AS22-2-M8-CTW	17680	M8×1.25	25	8	5	4	4	5	HPC09H,HPC10H HPC09M,HPC10M
AS25-2-M8-CTW	17682	M10×1.5		10	6	5	5	6	HPC11H~16H,HPC11M~12M
AS25-2-M10-CTW	17684	M10×1.5	25	10	6	5	5	6	HPC11H~16H,HPC11M~12M

ACCESSORIES for MICRON CHUCK H series M series



**CHUCK WRENCH** (For MICRON CHUCK H series, M series and N series)

HOOK PIN SPANNER		
CHUCK CODE	WRENCH CODE	
MICRON CHUCK		
HPC03H~HPC16H HPC03M~HPC12M HPC03N~HPC12N	FP45-48G	35851