

FIG.1

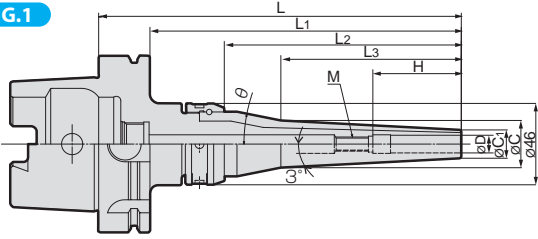


FIG.2

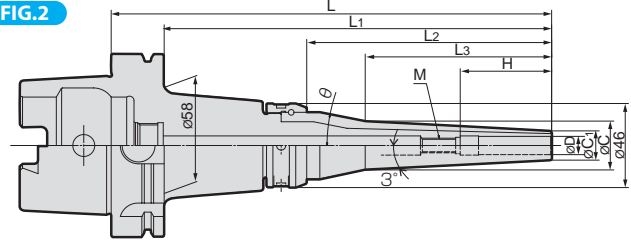


FIG.3

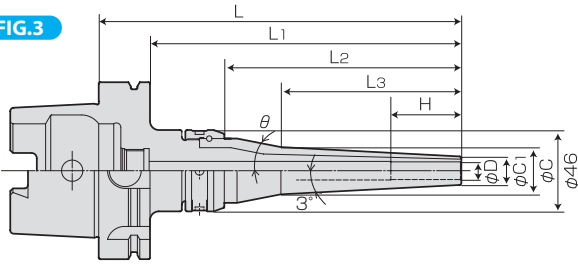
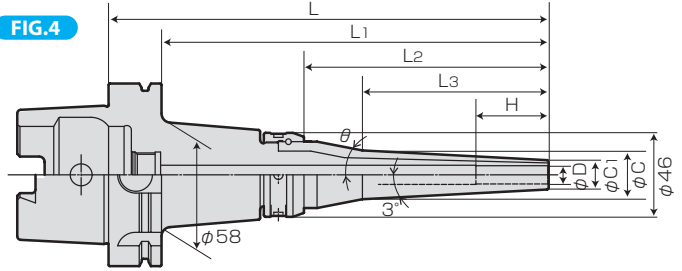


FIG.4



MODEL		STOCK	Fig	øD	øC1	øC	L	L1	L2	L3	H	Min insert length	Adjust length MIN	Adjust length MAX	M	θ	N/W (kg)		
Max. 15,000 min⁻¹																			
HSKA50	HPC03M-	150	△	3	9	16	150	124	84	67	-	20	-	-	-	34	1.1		
	HPC04M-	150	△		10	17												33	1.1
	HPC05M-	150	△		11	18												32	1.1
	HPC06M-	150	△	1	12	19	50	35	35	50	M6	27	1.1						
	HPC07M-	150	△		13	20								28	1.1				
	HPC08M-	150	△		14	21								26	1.1				
	HPC09M-	150	△	1	15	22	55	40	37	55	M8	24	1.1						
	HPC10M-	150	△		16	23								23	1.1				
	HPC11M-	150	△		17	24								23	1.1				
HPC12M-	150	△	18	25	21	1.1													
Max. 15,000 min⁻¹																			
HSKA63	HPC03M-	150	△	3	9	16	150	124	84	67	-	20	-	-	-	34	1.3		
		200	△			20	200	174	134	102								18	1.5
	HPC04M-	150	○			4	10	17	150	124								84	67
		200	○	21	200			174	134	102	17	1.5							
	HPC05M-	150	△	5	11			18	150	124	84	67	-	20	-	-	-	32	1.3
		200	△			22	200	174	134	102	16	1.5							
	HPC06M-	150	○			6	12	19	150	124	84	67							
		200	○	23	200			174	134	102	15	1.5							
	HPC07M-	150	△	7	13			20	150	124	84	67	-	20	-	-	-	28	1.3
		200	△			24	200	174	134	102	14	1.5							
	HPC08M-	150	○			8	14	21	150	124	84	67							
		200	○	25	200			174	134	102	13	1.5							
	HPC09M-	150	△	9	15			22	150	124	84	67	50	35	35	50	M8	26	1.4
		200	△			26	200	174	134	102	12	1.5							
	HPC10M-	150	○			10	16	23	150	124	84	67							
		200	○	27	200			174	134	102	11	1.5							
	HPC11M-	150	△	11	17			24	150	124	84	67	55	40	37	55	M8	23	1.4
		200	△			28	200	174	134	102	10	1.6							
HPC12M-	150	○	12			18	25	150	124	84	67	55							
	200	○		29	200		174	134	102	9	1.6								

MODEL	STOCK	Fig	øD	øC1	øC	L	L1	L2	L3	H	Min insert length	Adjust length		M	θ	N/W (kg)																																												
												MIN	MAX																																															
Max. 10,000 min⁻¹																																																												
Hska100	HPC03M-	155	△	3	3	9	16	155	126	84	67	20					34	3.1																																										
		205	△				20	205	176	134	102						18	3.2																																										
		255	△				4	255	226								18	4.1																																										
	HPC04M-	155	○	3	4	10	17	155	126	84	67						35						33	3.1																																				
		205	○				21	205	176	134	102												17	3.3																																				
		255	△				4	255	226														17	4.1																																				
	HPC05M-	155	△	3	5	11	18	155	126	84	67																		32	3.1																														
		205	△				22	205	176	134	102																		16	3.3																														
		255	△				4	255	226																				16	4.1																														
	HPC06M-	155	○	3	6	12	19	155	126	84	67																								30	3.1																								
		205	○				23	205	176	134	102																								15	3.3																								
		255	△				4	255	226																										15	4.2																								
	HPC07M-	155	△	3	7	13	20	155	126	84	67																														28	3.1																		
		205	△				24	205	176	134	102																														14	3.3																		
		255	△				4	255	226																																14	4.2																		
	HPC08M-	155	○	3	8	14	21	155	126	84	67																																				27	3.1												
		205	○				25	205	176	134	102																																				13	3.3												
		255	△				4	255	226																																						13	4.2												
	HPC09M-	155	△	3	9	15	22	155	126	84	67																																										26	3.1						
		205	△				26	205	176	134	102																																										12	3.3						
		255	△				4	255	226																																												12	4.2						
	HPC10M-	155	○	3	10	16	23	155	126	84	67																																																24	3.2
		205	○				27	205	176	134	102																																																11	3.3
		255	△				4	255	226																																																		11	4.2
HPC11M-	155	△	3	11	17	24	155	126	84	67																																																	23	3.2
	205	△				28	205	176	134	102																																																	10	3.3
	255	△				4	255	226																																																			10	4.2
HPC12M-	155	○	1	12	18	25	155	126	84	67							55	40	40	40	M10																																						21	3.2
	205	○				29	205	176	134	102																																																	9	3.3
	255	△				2	255	226																																																			9	4.2

△ : Mark tools are manufactured to order.

- NOTE: 1.Coolant pipe is included.
 2.Chuck wrench and adjust screw are sold separately.
 3.Adjust screw is manufactured to order. Please instruct when ordering.
 4.The above-mentioned maximum speed will vary depending rigidity of the machine and balance of cutter. An adequate cutting condition should be selected for each case.

ORDERING EXAMPLE

① HSKA63 - ② HPC ③ 06 ④ M - ⑤ 150

- ① Shank Size
- ② Holder's Name
- ③ Cutter's Shank Dia.
- ④ M series
- ⑤ G.L. Length



HSK series
 BT series
 ST series
 Versatile Tool
 Cutting Tool
 Accessories

ACCESSORIES for MICRON CHUCK H series M series



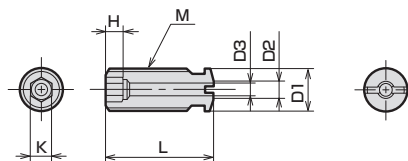
CHUCK WRENCH (For MICRON CHUCK H series, M series and N series)

HOOK PIN SPANNER		
CHUCK CODE	WRENCH CODE	
MICRON CHUCK		
HPC03H~HPC16H HPC03M~HPC12M HPC03N~HPC12N	FP45-48G	35851

ACCESSORIES for MICRON CHUCK H series M series



ADJUST SCREW (For MICRON CHUCK H series, M series)



MODEL	CODE	M	L	D1	D2	D3	K	H	MICRON CHUCK
AS17-2-M5-CTW	17672	M5×0.8	17	5	3	2	2.5	3	HPC06H
AS17-2-M6-CTW	17676	M6×1.0	17	6			3		HPC07H
AS22-2-M6-CTW	17678		22	8	5	4	4	5	HPC08H,HPC08M
AS22-2-M8-CTW	17680	M8×1.25	25						4
AS25-2-M8-CTW	17682	M10×1.5	25	10	6	5	5	6	HPC09M,HPC10M
AS25-2-M10-CTW	17684								HPC11H~16H,HPC11M~12M