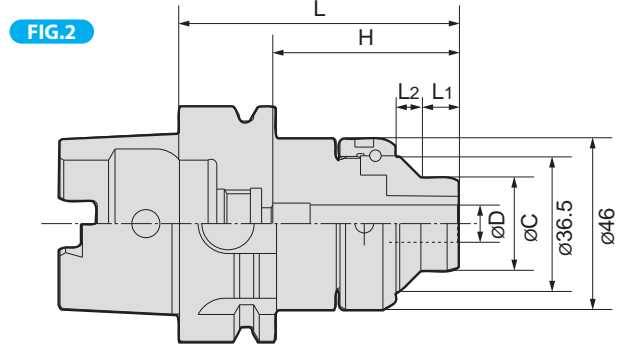
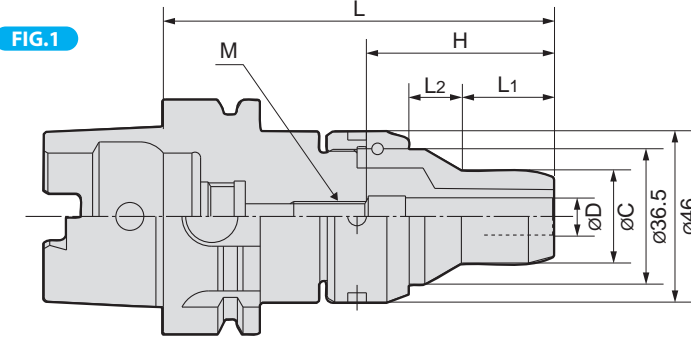


▶▶▶ Thru-the-tool Coolant Available (Option)

▶▶▶ Thru-the-groove Coolant Available (Option)



Note : When HPC03H, HPC04H and HPC05H is used through the groove coolant or through the tool coolant usage, please keep the coolant pressure within 1MPa and under. In case those 3 kinds of tools are used in through the tool coolant at over 1MPa pressure, it requires special adjustment according to its pressure, need additional cost, please contact Showa distributor.

MODEL	A	AA	GType	FIG	øD	L	L1	L2	øC	H	Min insert length	Adjust		Adjust screw M	ST	CT	N/W (Kg)					
												MIN	MAX									
Max. 20,000 min⁻¹(G Type:Max. 30,000 min⁻¹)																						
HSKA50	HPC03H	075	○	○	○	2	3	75	10.3	6.7	25	55						○	○ additional work	0.9		
		105	○	○	○	1		105	25	14								85	○	○ additional work	1.2	
	HPC04H	075	○	○	○	2	4	75	10.3	6.7		15	55							○	○ additional work	0.9
		105	○	○	○	1		105	25	14										85	○	○ additional work
	HPC05H	075	△	△	△	2	5	75	10.3	6.7		55								○	○ additional work	0.9
		105	△	△	△	1		105	25	14										85	○	○ additional work
	HPC06H	075	○	○	○	2	6	75	10.3	6.7		37.5	23	28	37		AS17-2-M5-CTW			○ at cost	○	0.9
		105	○	○	○	1		105	25	14										30	30	○ at cost
	HPC07H	075	△	△	△	2	7	75	10.3	6.7		23	28				AS17-2-M6-CTW			○ at cost	○	0.9
		105	△	△	△	1		105	25	14										30	30	○ at cost
	HPC08H	075	○	○	○	2	8	75	10.3	6.7		23								○ at cost	○	0.9
		105	○	○	○	1		105	25	14										35	35	50
	HPC09H	075	△	△	△	2	9	75	10.3	6.7		23								○ at cost	○	0.9
		105	△	△	△	1		105	25	14										35	35	50
	HPC10H	075	○	○	○	2	10	75	10.3	6.7		23								○ at cost	○	0.9
		105	○	○	○	1		105	25	14										35	35	50
HPC11H	075	△	△	△	2	11	75	12.2	4.8	25								○ at cost	○	0.9		
	105	△	△	△	1		105	25	14									55	40	40	55	AS22-2-M6-CTW
HPC12H	075	○	○	○	2	12	75	12.2	4.8	50	25							○ at cost	○	0.9		
	105	○	○	○	1		105	25	14									55	40	40	55	AS22-2-M6-CTW
HPC13H	105	△	△	△	1	13	105	25	14	32	55	40	40	55				○ at cost	○	1.0		
	105	△	△	△														14	105	25	14	60
HPC14H	105	△	△	△	1	14	105	25	14	32	55	40	40	55				○ at cost	○	1.0		
	105	△	△	△														15	105	25	14	60
HPC15H	105	△	△	△	1	15	105	25	14	32	55	40	40	55				○ at cost	○	1.0		
	105	△	△	△														16	105	25	14	60

Max. 20,000 min⁻¹(G Type:Max. 30,000 min⁻¹)																									
HSKA63	HPC03H	075	○	○	○	2	3	75	10.3	6.7	25	53							○	○ additional work	1.2				
		105	○	○	○	1		105	25	14									83	○	○ additional work	1.4			
		135	○	○	○	1		135	25	14									113	○	○ additional work	1.9			
	HPC04H	075	○	○	○	2	4	75	10.3	6.7		15	53								○	○ additional work	1.2		
		105	○	○	○	1		105	25	14											83	○	○ additional work	1.4	
		135	○	○	○	1		135	25	14											113	○	○ additional work	1.9	
	HPC05H	075	△	△	△	2	5	75	10.3	6.7		53									○	○ additional work	1.2		
		105	△	△	△	1		105	25	14											83	○	○ additional work	1.4	
		135	△	△	△	1		135	25	14											113	○	○ additional work	1.9	
	HPC06H	075	○	○	○	2	6	75	10.3	6.7		37.5	23	25	35		AS17-2-M5-CTW			○ at cost	○	1.2			
		105	○	○	○	1		105	25	14										30	30	37	○ at cost	○	1.4
		135	○	○	○	1		135	25	14										30	30	37	○ at cost	○	1.9
HPC07H	075	△	△	△	2	7	75	10.3	6.7	23	25	35							○ at cost	○	1.2				
	105	△	△	△	1		105	25	14										30	30	37	○ at cost	○	1.4	
	135	△	△	△	1		135	25	14										30	30	37	○ at cost	○	1.9	

MODEL		A	AA	GType	FIG	φD	L	L1	L2	φC	H	Min insert length	Adjust MIN	Adjust MAX	Adjust screw M	ST	CT	N/W (Kg)														
Max. 20,000 min⁻¹(G Type:Max. 30,000 min⁻¹)																																
HSKA63	HPC08H	075	○	○	○	2	75	10.3	6.7	25	53	23	-	-	-	○ at cost	○	1.2														
		105	○	○	○	1	105	25	14										AS22-2-M6-CTW	○ at cost	○	1.4										
	135	○	○	○	1	135			○ at cost										○	1.9												
	HPC09H	075	△	△	△	2	75	10.3	6.7										23	-	-	-	○ at cost	○	1.2							
		105	△	△	△	1	105	25	14										AS22-2-M8-CTW	○ at cost	○	1.4										
	HPC10H	135	△	△	△	1	135												○ at cost	○	1.9											
		075	○	○	○	2	75	10.3	6.7										23	-	-	-	○ at cost	○	1.2							
	HPC11H	105	○	○	○	1	105	25	14										AS22-2-M8-CTW	○ at cost	○	1.4										
		135	○	○	○	1	135												○ at cost	○	1.9											
	HPC12H	075	△	△	△	2	75	12.2	4.8										55	40	40	55	AS22-2-M8-CTW	○ at cost	○	1.2						
		105	△	△	△	1	105	25	14										○ at cost	○	1.4											
	HPC13H	135	△	△	△	1	135												○ at cost	○	1.9											
		075	○	○	○	2	75	12.2	4.8										50	25	-	-	-	○ at cost	○	1.2						
	HPC14H	105	○	○	○	1	105	25	14										AS22-2-M8-CTW	○ at cost	○	1.4										
		135	○	○	○	1	135												○ at cost	○	1.9											
	HPC15H	075	△	△	△	1	75	10.3	6.7										55	40	40	55	AS22-2-M8-CTW	○ at cost	○	1.5						
105		△	△	△	1	105	25	14	○ at cost	○	1.7																					
HPC16H	135	△	△	△	1	135			○ at cost	○	1.7																					
	105	△	△	△	1	105			○ at cost	○	1.5																					
Max. 12,000 min⁻¹																																
HSKA100	HPC03H	110	○	○	-	3	110	25	14	25	81	15	-	-	-	○	○	2.7														
	HPC04H	110	○	○	-	4													AS17-2-M5-CTW	○ at cost	○											
	HPC05H	110	△	△	-	5													AS17-2-M6-CTW	○ at cost	○											
	HPC06H	110	○	○	-	6													AS22-2-M6-CTW	○ at cost	○											
	HPC07H	110	△	△	-	7													AS22-2-M8-CTW	○ at cost	○											
	HPC08H	110	○	○	-	8														○ at cost	○											
	HPC09H	110	△	△	-	9													AS25-2-M10-CTW	○ at cost	○											
	HPC10H	110	○	○	-	10														○ at cost	○											
	HPC11H	110	△	△	-	11														○ at cost	○											
	HPC12H	110	△	△	-	12														○ at cost	○											
	HPC13H	110	△	△	-	13														○ at cost	○											
	HPC14H	110	△	△	-	14														○ at cost	○											
	HPC15H	110	△	△	-	15														○ at cost	○											
	HPC16H	110	△	△	-	16														○ at cost	○											
	Max. 12,000 min⁻¹																															
	HSKA100	HPC03H	110	○	○	-													3	110	25	14	32	60	40	40	56	-	○	○	2.8	
HPC04H		110	○	○	-	4	AS25-2-M10-CTW	○ at cost	○																							
HPC05H		110	△	△	-	5		○ at cost	○																							
HPC06H		110	○	○	-	6		○ at cost	○																							
HPC07H		110	△	△	-	7		○ at cost	○																							
HPC08H		110	○	○	-	8		○ at cost	○																							
HPC09H		110	△	△	-	9		○ at cost	○																							
HPC10H		110	○	○	-	10		○ at cost	○																							
HPC11H		110	△	△	-	11		○ at cost	○																							
HPC12H		110	△	△	-	12	○ at cost	○																								
HPC13H		110	△	△	-	13	○ at cost	○																								
HPC14H		110	△	△	-	14	○ at cost	○																								
HPC15H		110	△	△	-	15	○ at cost	○																								
HPC16H		110	△	△	-	16	○ at cost	○																								

△ : Mark tools are manufactured to order.

- NOTE : 1. Each holder supplied with built-in coolant pipe. (Stationary type)
 2.Chuck wrench and adjust screw are sold separately.
 3. When the thru-the-coolant application is needed for HPC03H, HPC04, or HPC05, please instruct when ordering. "CT" will be marked for this application.
 4. The the thru-the-groove-coolant application for HPC06 or larger will be charged. Please instruct when ordering. "ST" will be marked for this application.
 5. The above-mentioned maximum speed will vary depending rigidity of the machine and balance of cutter. An adequate cutting condition should be selected for each case.

ORDERING EXAMPLE

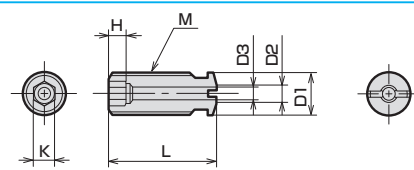
① HSKA50 - ② HPC ③ 03 H - ④ 075 A

- ① Shank Size
- ② Holder's Name
- ③ Cutter's Shank Dia.
- ④ H series
- ⑤ G.L. Length
- ⑥ Grade

ACCESSORIES **P.114 ADJUST SCREW** ACCESSORIES **P.116 CHUCK WRENCH**

ACCESSORIES for MICRON CHUCK H series M series

ADJUST SCREW (For MICRON CHUCK H series, M series)



MODEL	CODE	M	L	D1	D2	D3	K	H	MICRON CHUCK
AS17-2-M5-CTW	17672	M5×0.8	17	5	3	2	2.5	3	HPC06H
AS17-2-M6-CTW	17676	M6×1.0	17	6					HPC07H
AS22-2-M6-CTW	17678		22	8	5	4	5	HPC08H,HPC08M	
AS22-2-M8-CTW	17680	M8×1.25	25	10	6	5	5	6	HPC09H,HPC10H
AS25-2-M8-CTW	17682								HPC09M,HPC10M
AS25-2-M10-CTW	17684	M10×1.5							HPC11H~16H,HPC11M~12M

BT series
 HSK series
 ST series
 Versatile Tool
 Cutting Tool
 Accessories

ACCESSORIES for MICRON CHUCK H series M series



CHUCK WRENCH (For MICRON CHUCK H series, M series and N series)

HOOK PIN SPANNER		
CHUCK CODE	WRENCH CODE	
MICRON CHUCK		
HPC03H~HPC16H HPC03M~HPC12M HPC03N~HPC12N	FP45-48G	35851