

▶▶▶ Thru-the-tool Coolant Available

▶▶▶ Thru-the-groove Coolant Available



HSK series

FIG.1

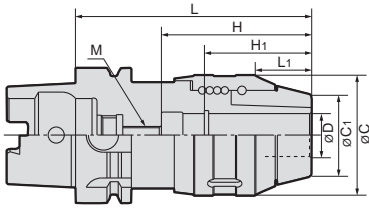


FIG.2

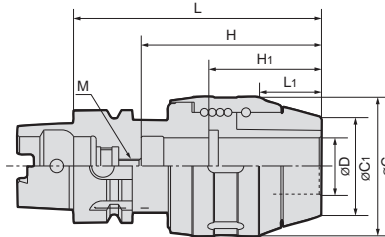
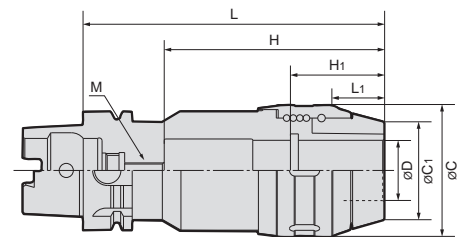


FIG.3



Cutter shank diameter should be h7 or better.

CODE	A	AA	FIG	øD	L	L1	øC	øC1	H	H1	min tool insert length		Adjust min/max	M	N/W (kg)												
											ST	CT															
Max. 10,000 min <sup>-1</sup>																											
HSKA50	HPC16 -110	○	○	2	16	110	26	56	34	75	50	40	51	57~67	M6	1.4											
	HPC20 -110	○	○		20				38			45															
	HPC25 -115	○	○		25				44			50															
	HPC32 -120	△	△		32				52			55															
Max. 10,000 min <sup>-1</sup>																											
HSKA63	HPC16 -110	○	○	1	16	110	26	56	34	75	50	40	51	59~67	M8	1.9											
	HPC20 -110	○	○		20				38			45															
	HPC25 -115	○	○		25				44			50															
	HPC32 -120	○	○	2	32	120	27.5	70	52	85	53	55	55	64~72	2.1												
	HPC32 -160	○	○													3	42	160	30.5	82	62	117	57	60	60	96~104	2.9
	HPC42 -160	△	△																								
Max. 8,000 min <sup>-1</sup>																											
HSKA100	HPC16 -110	○	○	1	16	110	26	56	34	70	50	40	51	59~65	M12	3.0											
	HPC20 -110	○	○		20				38			45															
	HPC25 -115	○	○		25				44			50															
	HPC25 -135	○	○		25				44			50															
	HPC32 -120	○	○	3	32	120	27.5	70	52	80	53	55	55	63~70	3.4												
	HPC32 -165	○	○													165	117	100~107	4.6								
	HPC42 -135	○	○													1	42	135	30.5	82	62	95	57	60	60	78~85	3.8
	HPC42 -165	○	○													3	42	165	30.5	82	62	122	57	60	60	105~112	4.8

△ : Mark tools are manufactured to order.

NOTE: 1. Coolant pipe is included.

2. Chuck wrench and adjust screw are sold separately.

3. Insert the O-ring included in the box to the groove of the ID for thru-the-tool use.

4. The above-mentioned maximum speed will vary depending rigidity of the machine and balance of cutter. An adequate cutting condition should be selected for each case.

ORDERING EXAMPLE

①	②	③	④	⑤
HSKA50	- HPC	16	- 110	A
① Shank Size	② Holder's Name	③ Cutter's Shank Dia.	④ G.L. Length	⑤ Grade



ACCESSORIES

▶ P.111 STRAIGHT COLLETS



ACCESSORIES

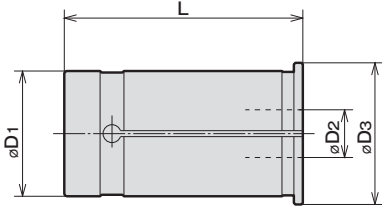
▶ P.112 ADJUST SCREW, CHUCK WRENCH

ACCESSORIES for MICRON CHUCK (Milling Chuck)



# STRAIGHT COLLET

SC<sup>①</sup>-<sup>②</sup>D<sub>2</sub>



CODE		φD <sub>3</sub>	L
SC <sup>①</sup> - <sup>②</sup> D <sub>2</sub>			
SC16	-6·8·10·12	20	47
SC20	-6·6.8·7·8·8.5·9·10·11·12·13·14·15·16	23.5	50
SC25	-6·6.8·7·8·8.5·9·10·11·12·13·14·15·16·17·18·19·20·21	30	60
SC32	-6·6.8·7·8·8.5·9·10·11·12·13·14·15·16·17·18·19·20·21·22·23·24·25	37.5	70
SC42	-6·6.8·7·8·8.5·9·10·11·12·13·14·15·16·17·18·19·20·21·22·23·24·25·32	47.5	80

ORDERING EXAMPLE

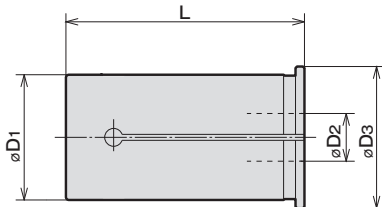
① SC ② 16 - ③ 6

- ① Name
- ② D<sub>1</sub>
- ③ D<sub>2</sub>



# STRAIGHT COLLET (Oil-Hole Type)

SCOH<sup>①</sup>-<sup>②</sup>D<sub>2</sub>



CODE		φD <sub>3</sub>	L	最小挿入量
SCOH <sup>①</sup> - <sup>②</sup> D <sub>2</sub>				
SCOH20	-6	23.5	54.5	27
	-8			30
	-10			34
	-12			35
	-16			38
SCOH25	-6	30	60	27
	-8			30
	-10			32
	-12			35
	-16			38
	-20			41
SCOH32	-6	37.5	70	27
	-8			30
	-10			32
	-12			35
	-16			38
	-20			40
	-25			44

CODE		φD <sub>3</sub>	L	最小挿入量
SCOH <sup>①</sup> - <sup>②</sup> D <sub>2</sub>				
SCOH42	-6	47.5	80	27
	-8			30
	-10			32
	-12			35
	-16			42
	-20			45
	-25			50
	-32			

ORDERING EXAMPLE

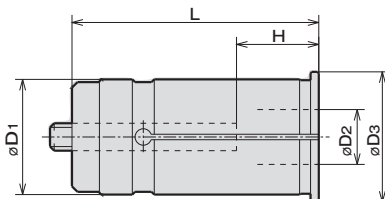
① SCOH ② 32 - ③ 20

- ① Name
- ② D<sub>1</sub>
- ③ D<sub>2</sub>



# STRAIGHT COLLET WITH ADJUST SCREW

NC<sup>①</sup>-<sup>②</sup>D<sub>2</sub>



CODE		φD <sub>3</sub>	L	H	
NC <sup>①</sup> - <sup>②</sup> D <sub>2</sub>				MIN.	MAX.
NC20	-6·8·10·12·16	23.5	60	25	35
NC32	-6·8·10	37.5	80	20	45
	-12·16·20·25			25	55
NC42	-6·8·10·12	47.5	90	20	45
	-16·20·25·32			30	65

NOTE: Applicable to Micron chucks and Hard chucks.

ORDERING EXAMPLE

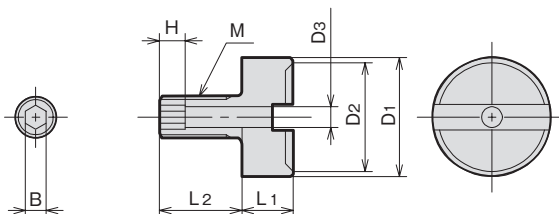
① NC ② 32 - ③ 6

- ① Name
- ② D<sub>1</sub>
- ③ D<sub>2</sub>

ACCESSORIES for MICRON CHUCK (Milling Chuck)



# ADJUST SCREW (For MICRON CHUCK standard)



MODEL	CODE	øD1	øD2	øD3	M	L1	L2	H	B	MICRON CHUCK			
HAS1620-05-	M06	17652	15	13	3	5	18	2.5	3	HSKA50			
	M08	17654			4					M8	16	4	HSKA63
	M12	17656			5					M12	11	5	HSKA100
HAS2532-10-	M06	17658	23	21	3	10	18	4	3	HSKA50			
	M08	17660			4					M8	16	4	HSKA63
	M12	17662			5					M12	11.5	5	HSKA100
HAS4250-10-	M08	17664	33	31	4	11.5	28	4	4	HSKA63			
	M12	17666			5					M12	11.5	5	HSKA100

NOTE : 1. The above Adjust Screws are sold separately.  
 2. Above Adjust Screws can not be used for "H" and "M" series Micron Chucks. Adjust Screws for "H" and "M" series Micron Chucks are manufactured to order.

BT series

HSK series

ST series

Versatile Tool

Cutting Tool

Accessories



# CHUCK WRENCH (For MICRON CHUCK standard)

HOOK SPANNER		
CHUCK CODE	WRENCH CODE	
MICRON CHUCK		
HPC16,HPC20	FS52-55G	35852
HPC25,HPC16S,HPC20S	FS58-62G	35853
HPC32,HPC25S	FS68-75G	35854
HPC42,HPC32S	FS80-90G	35855