

CUTTING CONDITIONS	
MAX.RPM	3000min ⁻¹
MAX.COOLANT PRESSURE	2.0MPa

MODEL	CODE	øD	øC	L	B	P
BT50	-OH-CTH16-170	13851	16	52	170	80
	-CTH25-185	13852	25	68	185	
	-CTH32-195	13854	32	83	195	

NOTE : When ordering, please inform h1 and h2 dimensions, which differ depending on machine maker and model.

ACCESSORIES
P.47 COLLETS

ACCESSORIES
P.49 CHUCK WRENCH

ORDERING EXAMPLE			
①	②	③	④
BT50	OH-CTH	16	170
① Shank Size	② Name	③ Cutter's Shank Dia.	④ G.L. Length

ACCESSORIES for HARD CHUCK



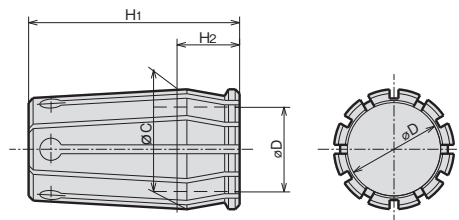
SPRING COLLET (For HARD CHUCK)

C^① - D^②

ORDERING EXAMPLE

^① C12 - ^② 6

- ① Chuck Type
- ② ϕ D



CODE	ϕ D										ϕ C	H1	H2	Applicable holder			
														CTH12L	CTH	CT	
C12L-D	6	8	10	12							18.00	40	13	CTH12L	—	—	
C16-D	6	8	10	12	16						24.00	50	17	—	CTH16	—	
C20-D	6	8	10	12	16	20					28.75	50	15	—	CTH20	—	
C25-D			10	12	16	20	25				35.75	68	19	—	CTH25	CT25	
C32-D					16	20	25	32			45.25	80	21	—	CTH32	CT32	
※CS32-D(SHORT)					16	20	25	32			45.25	70	21	—	CTH32	—	
C42-D						20	25	32	42		55.00	90	21	—	CTH42	—	
C50-D								32	42	50	50.8	65.00	95	25	—	CTH50	—

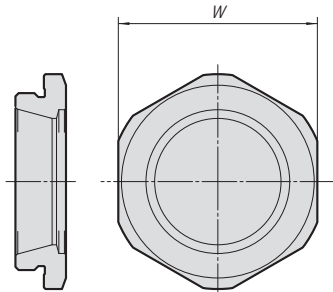
NOTE※ CS32-D(SHORT) spring collet is for BT40·NT40 Hard Chuck.

ACCESSORIES for HARD CHUCK



NOSE PIECE (For HARD CHUCK)

N^(No.)-D

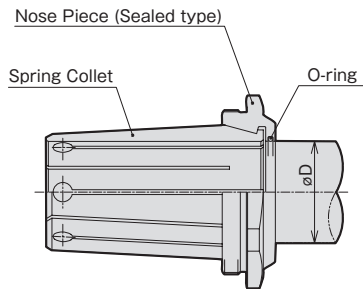


MODEL	CODE	W	holder
N16-16	33702	39	CTH16
N20-20	33703	43	CTH20
N25-25	33704	51	CTH25
N32-32	33706	63	CTH32
N42-42	33708	74	CTH42
N50-50	33710	84	CTH50



NOSE PIECE (For HARD CHUCK)

NG^(No.)-D



ORDERING EXAMPLE

① **NG** ② **16** - ③ **6**

- ① Name
- ② Chuck Size
- ③ øD

CODE	øD						HARD CHUCK CODE					
NG16-øD	6	8	10	12	16						CTH16	
NG20-øD	6	8	10	12	16	20					CTH20	
NG25-øD				12	16	20	25				CTH25	
NG32-øD					16	20	25	32			CTH32	
NG42-øD						20	25	32	42		CTH42	
NG50-øD								32	42	50	50.8	CTH50



CHUCK WRENCH (For HARD CHUCK)

HOOK SPANNER

CHUCK CODE	WRENCH CODE	
HARD CHUCK		
CTH12L,CTH16	FS52-55G	35852
CTH20,CT25G	FS58-62G	35853
CTH25,CT32G	FS68-75G	35854
CTH32	FS80-90G	35855
CTH42	FS92-100	
CTH50	FS105-115	35829