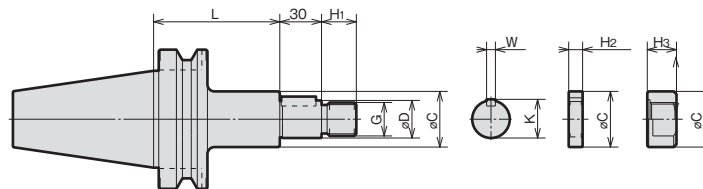


SIDE CUTTER ARBOR

BT[Ⓝ]-SCA[Ⓧ]-L



	MODEL	CODE	øD (h6)	L	øC	G	H1	H2	H3	K	W	N/W (kg)
BT40	-SCA12.7 -060	11092	12.7	60	20	M12×1.25	15	5 10 20	12	◇	◇	1.2
	-SCA15.875-075	11094	15.875	75	26	M14×1.5	16		13	17.42	3.18	1.4
	-SCA22.225-075	11098	22.225	75	34	M20×1.5	21		18	23.82	1.7	
	-SCA25.4 -075	11100	25.4	75	40	M24×2	25		21	27.78	6.35	2.0
	-120	11102		120					25	27.78	6.35	2.5
	-SCA31.75 -090	11104	31.75	90	46	M30×2	30		26	34.92	7.92	2.6
BT50	-SCA12.7 -075	13212	12.7	75	20	M12×1.25	15	5 10 20	12	◇	◇	3.9
	-105	13214		105								4.0
	-SCA15.875-090	13216	15.875	90	26	M14×1.5	16		13	17.42	3.18	4.0
	-120	13218		120					4.2			
	-SCA22.225-090	13220	22.225	90	34	M20×1.5	21		18	23.82	4.5	
	-135	13222		135					4.7			
	-SCA25.4 -090	13224	25.4	90	40	M24×2	25		21	27.78	6.35	4.7
	-135	13226		135					5.1			
	-SCA31.75 -090	13228	31.75	90	46	M30×2	30		26	34.92	7.92	5.1
	-135	13230		135					5.7			
	-SCA38.1 -090	13232	38.1	90	55	M36×3	36		31	42.06	9.52	5.8
	-135	13234		135								6.7

ORDERING EXAMPLE

① BT40 - ② SCA ③ 12.7 - ④ 060

- ① Shank Size
- ② Name
- ③ øD
- ④ G.L. Length