

FIG.1

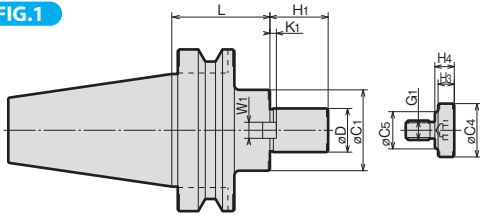


FIG.2

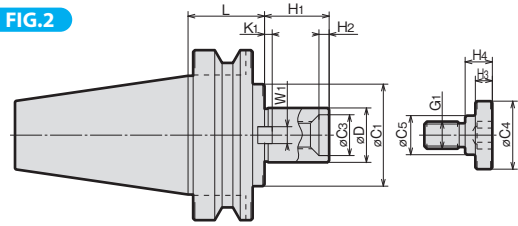


FIG.3

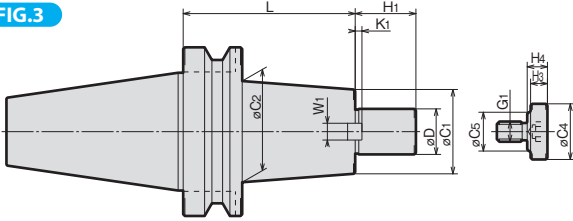
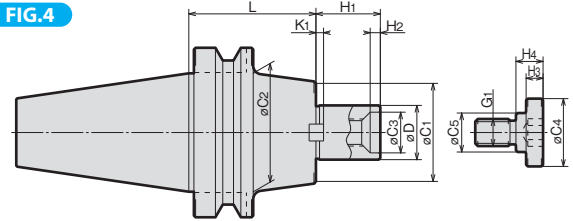


FIG.4

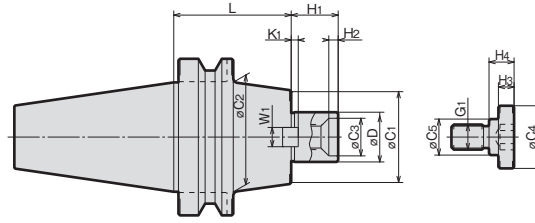


MODEL	FIG.	øD(h6)	L	øC1	øC2	øC3	H1	H2	KEY		G1	CLAMP BOLT				N/W (kg)																
									W1	K1		øC4	øC5	H3	H4																	
BT40	-SMA16-060	16 (15.875)	60	34	-	-	17	-	8	3	M8	20	15	7	9	1.3																
			120													1.7																
	-SMA22-060	22 (22.225)	60	42	-	-	27	-	8	3.5	M10	28	18	9	11	1.5																
			120													2.1																
	-SMA27-045	1	27 (25.4)	45	50	-	-	36	-	10	4	M12	33	23	10	12	1.5															
				105													2.4															
-SMA32-045	3	32 (31.75)	45	60	-	24	38	6	10	4.5	M16	40	23	10	16	1.7																
			90													2.7																
BT50	-SMA16-075	16 (15.875)	75	34	-	-	17	-	8	3	M8	20	15	7	9	4.1																
			120													4.4																
			150													4.8																
			200													5.2																
	-SMA22-075	1	22 (22.225)	75	42	-	-	27	-	8	3.5	M10	28	18	9	11	4.3															
				120													4.8															
				150													5.1															
				180													5.5															
	-SMA22-075	1	22 (22.225)	200	42	-	-	27	-	8	3.5	M10	28	18	9	11	5.7															
				250													6.3															
				300													6.9															
				350													7.3															
	-SMA22-075	1	22 (22.225)	400	42	-	-	27	-	8	3.5	M10	28	18	9	11	8.0															
				400													8.0															
				-SMA27-060													1	27 (25.4)	60	50	-	-	36	-	10	4	M12	33	23	10	12	4.3
																			105													5.2
150	6.0																															
200	7.2																															
-SMA27-060	2	27 (25.4)	250	50	60	-	36	-	10	4	M12	33	23	10	12	8.0																
			300													9.1																
			350													10.3																
			400													11.5																

MODEL	FIG.	øD(h6)	L	øC1	øC2	øC3	H1	H2	KEY		G1	CLAMP BOLT				N/W (kg)															
									W1	K1		øC4	øC5	H3	H4																
BT50	-SMA32 -045	2	32 (31.75)	45	60	70	24	38	6	10	4.5	M16	40	23	10	16	4.2														
	-075			75													5.1														
	-105			105													5.9														
	-150			150													7.1														
	-200			200													8.5														
	-250			250													9.8														
	-300			300													11.1														
	-350			350													12.6														
	-400			400													13.9														
	-SMA40 -045			1													40 (38.1)	45	80	-	28	38	6	12	5	M20	50	27	14	20	4.3
	-075	75	5.5																												
	-SMA15.875-075	1	15.875	75	34	-	-	17	-	8	3	M8	20	15	7	9	4.2														
	-120			120													5.8														
	-165			165													7.4														
	-SMA22.225-150	1	22.225	150	42	-	-	27	-	8	3.5	M10	28	18	9	11	5.2														
	-200			200													5.8														
	-250			250													6.4														
	-300			300													7.0														
	-350			350													7.6														
	-400			400													8.2														
	-SMA25.4 -060	2	25.4	60	50	60	-	36	-	10	4	M12	33	23	10	12	4.3														
	-105			105													5.2														
	-150			150													6.1														
	-200			200													7.1														
	-250			250													8.0														
	-300			300													8.9														
	-350			350													10.0														
	-400			400													11.1														
	-SMA31.75 -045			2													31.75	45	60	70	24	38	6	10	4.5	M16	40	23	10	16	4.2
	-075																	75													5.2
	-105	105	5.9																												
	-150	150	7.2																												
	-200	200	7.8																												
	-250	250	9.8																												
	-300	300	11.2																												
	-350	350	12.5																												
	-400	400	13.8																												
	-SMA38.1 -150	1	38.1		150	80	-	28	38	6	12	5	M20	50	27	14		20													9.0
	-200			200	10.9																										
	-250			250	12.8																										
-300	300			14.9																											
-350	350			16.8																											
-400	400			18.0																											

NOTE : Arbors in ( ) for cutters in inches are in stock.

ORDERING EXAMPLE			
①	②	③	④
BT40	- SMA	16	- 060
①	Shank Size		
②	Name		
③	øD		
④	G.L. Length		



	MODEL	øD(h6)	L	øC1	øC2	øC3	H1	H2	KEY		G1	CLAMP BOLT				N/W (kg)
									W1	K1		øC4	øC5	H3	H4	
BT40	-SMB22.225-060	22.225	60	45	—	—	17	—	8	3.5	M10	28	18	9	11	1.5
	-SMB31.75 -045	31.75	45	60	—	24	30	6	12.7	4.5	M16	40	23	10	16	1.6
	-SMB38.1 -060	38.1	60	80	—	28	36	6	15.9	5	M20	50	27	14	20	2.6
BT50	-SMB22.225-060	22.225	60	45	—	—	17	—	8	3.5	M10	28	18	9	11	4.1
	-120		120													4.8
	-180		180													5.6
	-200		200													5.6
	-250		250													5.6
	-300		300													5.6
	-350		350													5.6
	-SMB31.75 -045	31.75	45	60	70	24	30	6	12.7	4.5	M16	40	23	10	16	4.1
	-075		75													4.8
	-105		105													5.6
	-150		150													5.6
	-200		200													5.6
	-250		250													5.6
	-300		300													5.6
	-350	350	5.6													
	-400	400	5.6													
	-SMB38.1 -045	38.1	45	80	—	28	36	6	15.9	5	M20	50	27	14	20	4.4
	-075		75													5.6
	-150		150													5.6
	-200		200													5.6
	-250		250													5.6
	-300		300													5.6
	-350		350													5.6
-400	400	5.6														

NOTE : For shell endmill with brazed T/C tips.

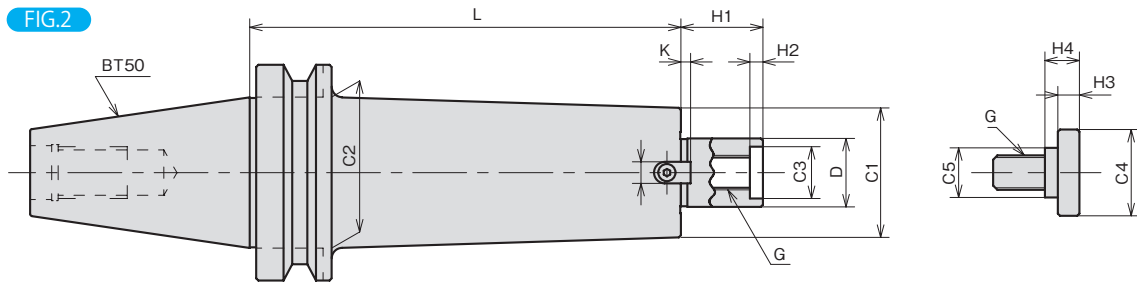
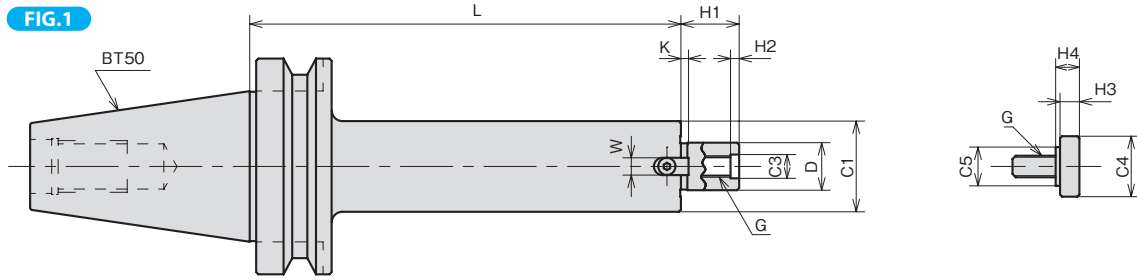
**ORDERING EXAMPLE**

① BT40 - ② SMB ③ 38.1 - ④ 060

- ① Shank Size
- ② Name
- ③ øD
- ④ G.L. Length

# SHELL MILL ARBOR (Type C)

BT<sup>Ⓝ</sup>-SMC<sup>Ⓞ</sup>-L



MODEL	øD(h6)	L	øC1	øC2	øC3	H1	H2	KEY		G1	CLAMP BOLT				N/W (kg)	
								W1	K1		øC4	øC5	H3	H4		
BT50	-SMC19.05	-060	60	40	—	16	—	8	3.5	M10	28	18	9	11	4.1	
		-120	120		—										4.8	
		-180	180		45										5.6	
	-SMC31.75	-045	45	60	—	24	18	6	12.7	4.5	M16	40	23	10	16	4.2
		-075	75		5.2											
		-105	105		6.2											
		-150	150		7.8											
		-200	200		9.5											
		-250	250		11.2											
	-SMC38.1	-045	45	80	—	28	24	6	15.9	5	M20	50	27	14	20	4.3
		-075	75													5.5
		-150	150													8.5
		-200	200													10.5
		-250	250													12.6
		-300	300													14.5
-350	350	18.6														
-400	400	18.8														

NOTE: For shell endmill with brazed T/C tips.

ORDERING EXAMPLE			
①	②	③	④
BT40	- SMC	19.05	- 060
① Shank Size			
② Name			
③ øD			
④ G.L. Length			

BT series

HSK series

ST series

Versatile Tool

Cutting Tool

Accessories



# CLAMP BOLT FOR FACE MILL ARBOR



FIG.1

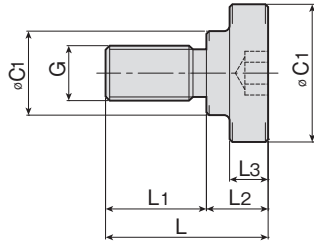
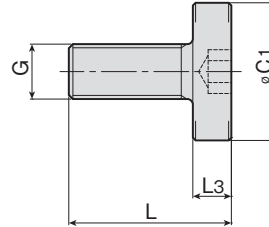


FIG.2



MODEL	CODE	FIG.	øC1	øC2	L	L1	L2	L3	G	ARBOR CODE
MBA - M 8	49771	1	20	15	23	14	9	7	M 8×P1.25	FMA22.225 SMA16
MBA - M10	49772		28	18	27	16	11	9	M10×P1.5	SMA22 SMB22.225
MBA - M12	49773		33	23	30	18	12	10	M12×P1.75	FMA,B25.4 FMB27 SMA27
MBA - M16	49774		40	23	40	24	16	10	M16×P2.0	FMA31.75 SMA32 SMB31.75
MBA - M20	49775		50	27	50	30	20	14	M20×P2.5	FMA,B38.1 FMB40 SMA40 SMB38.1
MBA - M24	49776		65	37	59	35	24	14	M24×P3.0	FMA50.8
MBH - M12	49691	2	33	—	38	—	—	10	M12×P1.75	FMH25.4 FMH27
MBH - M16	49692		40	—	45	—	—	10	M16×P2.0	FMH31.75