

BT series

MODEL		CODE		FIG.	ΦD(h6)	L	ΦC1	H	W1	K1	G1	Vertical hole					
BT30 (BBT30)	FMH16	-29	-35	1	16	35	29	16	8	5	M8×30	3-φ2 P.C.D.φ12					
		-37	-35		10016	16	35	37	16	8			5				
	FMH22	-47	-40	10018	2	22	40	47	18	10	5	M10×30	3-φ3 P.C.D.φ16				
BT40 (BBT40)	FMH16	-29	-60	1	16	60	37	16	8	5	M8×30	3-φ2 P.C.D.φ12					
		-105	11942			105											
	FMH16	-37	-60		11944	16	60	37	16	8	5	M8×30	3-φ2 P.C.D.φ12				
		-105	11946		105												
	FMH22	-47	-60		11948	22	60	47	18	10	5	M10×30	3-φ3 P.C.D.φ16				
		-105	11950		105												
	FMH22	-60	-60		11952		60							18	10	5	M10×30
		-105	11954		105												
	FMH27	-60	-60		11956	27	60	60	20	12	6	M12×35	3-φ3.5 P.C.D.φ19.5				
		-105	11958		105												
BT50 (BBT50)	FMH16	-29	-60	1	16	60	29	16	8	5	M8×30	3-φ2 P.C.D.φ12					
		-105	14540			105											
		-150	14541			150											
		-150	14542			150											
	FMH16	-37	-60			14543							60	37	16	8	5
		-105	14544		105												
		-150	14545		150												
		-150	14546		150												
		-200	14547		200												
	FMH22	-47	-60		14547	22	60	47	18	10	5	M10×30	3-φ3 P.C.D.φ16				
		-105	14548		105												
		-150	14549		150												
		-200	14550		200												
		-250	14551		250												
	FMH22	-60	-60		14552	22	60	60	18	10	5	M10×30	3-φ3 P.C.D.φ16				
		-105	14553		105												
		-150	14554		150												
		-200	14555		200												
		-250	14556		250												
	FMH25.4	-60	-60		14557	25.4	60	60	22	9.5	5	M12×35	3-φ3.5 P.C.D.φ18.5				
		-105	14558		105												
		-150	14559		150												
	FMH27	-60	-60		14560	27	60	60	20	12	6	M12×35	3-φ3.5 P.C.D.φ19.5				
		-105	14561		105												
		-150	14562		150												
	-200	14563	200														
	-250	14564	250														
FMH27	-76	-60	14565	60	76		20							12	6	M12×35	3-φ3.5 P.C.D.φ19.5
	-105	14566	105														
	-150	14567	150														
	-200	14568	200														
	-250	14569	250														
FMH31.75	-76	-60	14570	31.75	60	76	30	12.7	7	M16×35	3-φ4 P.C.D.φ24						
	-105	14571	105														
	-150	14572	150														
	-200	14573	200														
	-250	14574	250														
FMH31.75	-96	-60	14575	31.75	60	96	30	12.7	7	M16×35	3-φ4 P.C.D.φ24						
	-105	14576	105														
	-150	14577	150														

- NOTE :1. Face Mill Arbor for cutters with OH hole.
 2. Clamp bolt for fastening cutter is included.
 3. When included clamp bolt (M12, M16) does not fit, please choose suitable MBH-M12, M16 bolt from the clamp bolt list on page 84

ORDERING EXAMPLE

① ② ③ ④ ⑤
BT50 - FMH 27 - 60 - 60

① Shank Size
 ② Holder's Name
 ③ øD
 ④ øC1
 ⑤ G.L. Length

ACCESSORIES for FACE MILL ARBOR



CLAMP BOLT FOR FACE MILL ARBOR



FIG.1

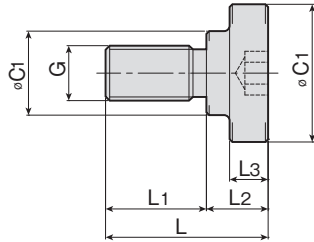
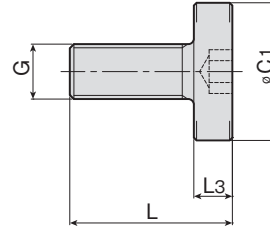


FIG.2



MODEL	CODE	FIG.	øC1	øC2	L	L1	L2	L3	G	ARBOR CODE
MBA - M 8	49771	1	20	15	23	14	9	7	M 8×P1.25	FMA22.225 SMA16
MBA - M10	49772		28	18	27	16	11	9	M10×P1.5	SMA22 SMB22.225
MBA - M12	49773		33	23	30	18	12	10	M12×P1.75	FMA,B25.4 FMB27 SMA27
MBA - M16	49774		40	23	40	24	16	10	M16×P2.0	FMA31.75 SMA32 SMB31.75
MBA - M20	49775		50	27	50	30	20	14	M20×P2.5	FMA,B38.1 FMB40 SMA40 SMB38.1
MBA - M24	49776		65	37	59	35	24	14	M24×P3.0	FMA50.8
MBH - M12	49691	2	33	—	38	—	—	10	M12×P1.75	FMH25.4 FMH27
MBH - M16	49692		40	—	45	—	—	10	M16×P2.0	FMH31.75

BT series

HSK series

ST series

Versatile Tool

Cutting Tool

Accessories