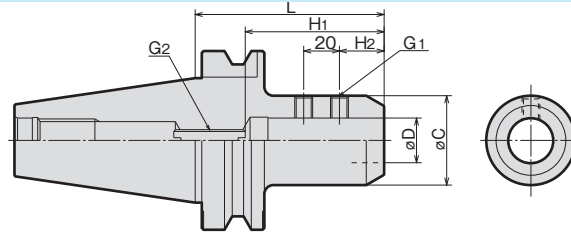


▶▶ Thru-the-tool Coolant Available

▶▶ BBT Available

### FEATURES

Run-out of the cutting tool is improved by the eccentric ID.



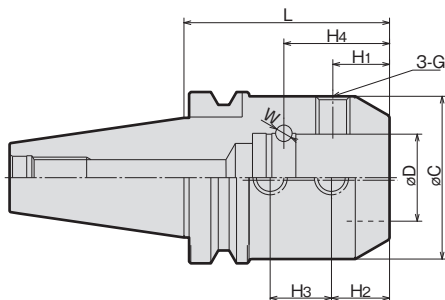
### ORDERING EXAMPLE

① **BT30** - ② **SLA** ③ **20** - ④ **075**

- ① Shank Size
- ② Holder's Name
- ③ Cutter's Shank Dia.
- ④ G.L. Length

	MODEL	øD(H6)	L	øC	H1		H2	G1	G2	N/W (kg)	
					MIN.	MAX.					
BT30 (BBT30)	-SLA20- 075	20	75	45	55	70	25	M10	M10	0.80	
	-SLA25- 085	25	85		55	70				0.85	
BT40 (BBT40)	-SLA6- 090	6	90	25	30	45	12	M6	M5	1.1	
	-SLA8- 090	8	90	30	35	50	12	M6	M6	1.1	
	-SLA10- 090	10	90	30	45	60	12	M8	M8	1.4	
	-SLA12- 090	12	90	32	45	60	10	M8	M8	1.4	
	-SLA16- 090	16	90	45	45	60	15	M12	M12	1.6	
	150		2.4								
	200		3.2								
	-SLA20- 090	20	90	50	55	70	25	M12	M12	1.6	
	150		2.8								
	200		3.6								
	-SLA25- 090	25	90	50	55	70	25	M12	M12	1.6	
	150		2.7								
	200		3.5								
	-SLA32- 105	32	105	60	65	80	30	M12	M12	1.3	
	150		3.5								
	200		4.4								
	-SLA40- 120	40	120	62	65	80	20	M12	M12	2.5	
	-SLA42- 120	42	120	62	65	80	32	M12	M12	2.5	
	BT50 (BBT50)	-SLA6- 105	6	105	25	30	45	12	M6	M5	4.1
		-SLA8- 105	8	105	30	35	50	12	M6	M6	4.3
-SLA10- 105		10	105	30	45	60	12	M8	M8	4.2	
-SLA12- 105		12	105	32	45	60	10	M8	M8	4.2	
-SLA16- 105		16	105	45	45	60	15	M12	M12	4.5	
150			5.0								
200			5.6								
250			6.2								
300			6.8								
-SLA20- 105		20	105	50	55	70	25	M12	M12	4.6	
150			5.3								
200			6.0								
250			6.9								
300			7.6								
-SLA25- 105		25	105	50	55	70	25	M12	M12	4.6	
150			5.3								
200			6.0								
250			6.8								
300			7.6								
350		8.1									
-SLA32- 105		32	105	60	65	80	30	M12	M12	4.9	
150			5.8								
200			6.8								
250			7.9								
300			9.1								
350			10.2								
400		11.2									
500		13.5									
-SLA40- 105		40	105	70	70	85	20	M16	M12	5.0	
150			6.3								
200	7.7										
250	9.4										
300	10.9										
-SLA42- 105	42	105	90	75	90	32	M16	M12	6.0		
150		8.2									
200		10.7									
250		13.1									
300		15.8									
350		18.3									
400		20.7									
500	25.4										
-SLA50- 120	50	120	98	75	90	35	M20	M12	7.1		
150		8.9									
200		11.8									
250		14.9									
300		17.9									

NOTE: 1. For endmill of straight shank with flat.  
2. Thru-the-tool application is acceptable. Please inform it when ordering.



ORDERING EXAMPLE			
①	②	③	④
BT50	-SLD	50.8	-120
① Shank Size			
② Holder's Name			
③ Cutter's Shank Dia.			
④ G.L. Length			

MODEL	CODE	øD(H6)	L	øC	H1	H2	H3	H4	G	øW	N/W (kg)	
BT50	-SLD50.8-120	13260	50.8	120	95	33.1	33.9	35.78	61.68	M20×1.5	11.18	6.6

NOTE : For ANSI combination shank endmills.