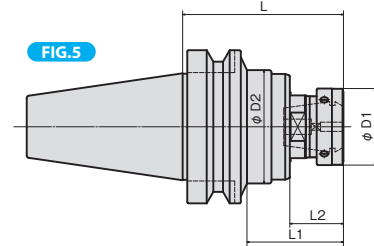
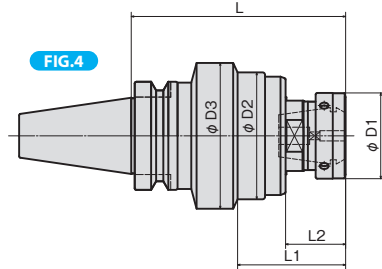
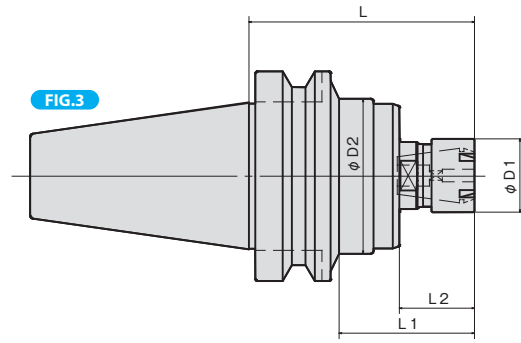
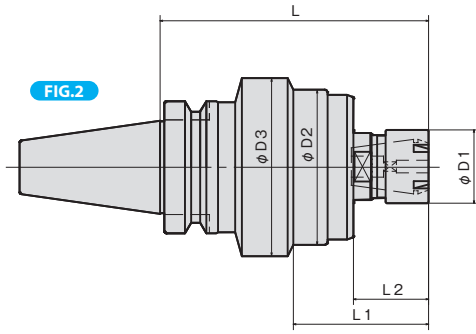
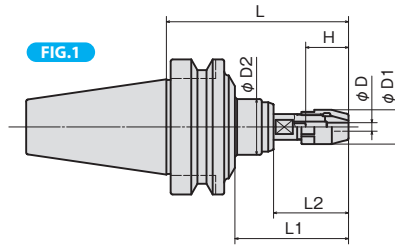


▶▶▶ Thru-the-tool Coolant Available

▶▶▶ Thru-the-groove Coolant Available (Option)



Please use the tool having shank tolerance within h7 for SYFS type.

	MODEL	CODE	FIG	φD	φD1	φD2	φD3	L	L1	L2	H	TAP SIZE	COLLET
BT30	-SYFS02	-095 200602	1	3	16	26	-	95	53	35	22	M1,M1.6,M2,No.3,No.4 M3,No.5,No.6	-
	-SYFS03	-095 200604		4									
	-SYFN12	-105 200616	4	-	36	51	62.5	105	54	30	-	M4~M12,No.8~U1/2 P1/8	CR13GBorGH
		-135 200617		135				84	60				
BT40	-SYFS02	-085 221042	1	3	16	26	-	85	53	35	22	M1,M1.6,M2,No.3,No.4 M3,No.5,No.6	-
	-SYFS03	-085 221044		4									
	-SYFN12	-090 221052	5	-	36	51	-	90	54	30	-	M4~M12,No.8~U1/2 P1/8	CR13GBorGH
				-120 221053				120	84	60			
	-SYFN16S	-125 221039	2	-	35	74	85	125	63	35	-	M4~M16,No.8~U5/8, P1/4	CR16GBorGH
				-155 221040				155	93	65			
				-185 221041				185	123	95			
				-125 221055				125	63	35			
-SYFN20	-155 221056	4	-	50	74	85	155	93	65	-	M4~M20,U5/16~U5/8, P1/8~P3/8	CR20GBorGH	
			-185 221057				185	123	95				
			-125 221055				125	63	35				
BT50	-SYFS02	-095 251091	1	3	16	26	-	95	53	35	22	M1,M1.6,M2,No.3,No.4 M3,No.5,No.6	-
	-SYFS03	-095 251093		4									
	-SYFN16S	-105 251107	3	-	35	74	-	105	63	35	-	M4~M16,No.8~U5/8, P1/4	CR16GBorGH
				-135 251108				135	93	65			
				-165 251109				165	123	95			
				-195 251110				195	153	125			
				-225 251100				225	183	155			
	-SYFN20	-105 251104	5	-	50	74	-	105	63	35	-	M4~M20,U5/16~U5/8, P1/8~P3/8	CR20GBorGH
		-135 251105		135				93	65				
		-165 251106		165				123	95				

- NOTE :1. Collet and chuck wrench are sold separately.  
 2. Applicable to synchronized machines only.  
 3. Thru-the-groove coolant type is manufactured to orders.

ACCESSORIES  
 P.53-56 COLLETS

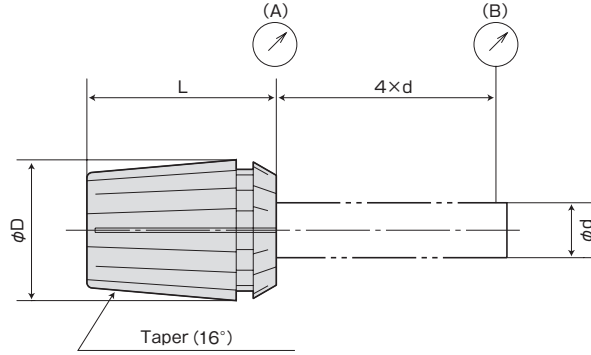
ACCESSORIES  
 P.57 NUT, CHUCK WRENCH

ORDERING EXAMPLE			
①	②	③	④
BT30	-SYFN	12	-105
① Shank Size ② Name ③ Type No ④ G.L. Length			



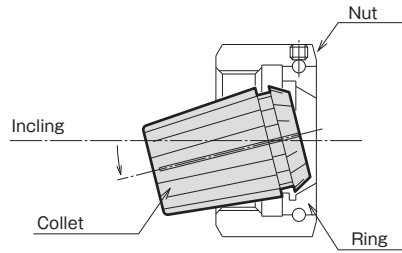
# CR COLLET

CR<sup>NO.</sup>-D



### Easy collet setting

- A half of ID of the ring is enlarged. Collet can be mounted easily by inclining it.



GRADE	RUNOUT (MAX. μm)	
	NOSE (A)	POINT (B)
(AA)	1	3
(A)	2	5
(STD)	5	15

Grade	application
AA grade · A grade	Reamer · Center drill Carbide small diameter drill, Endmill Whetstone for internal cylindrical grinding, Tool for high frequency motors Carbide drill Rotating tool for lathes ( the tool rotation )
Standard	General drill, tap Rotating tool for lathes (Work rotating )

CHUCK COLLET CODE	RSC07		RSC10		RSC13		RSC16		RSC20	
	CR07-d	GRADE	CR10-d	GRADE	CR13-d	GRADE	CR16-d	GRADE	CR20-d	GRADE
φd	φd	RANGE	φd	RANGE	φd	RANGE	φd	RANGE	φd	RANGE
	1.0	0.5~1.0	1.0	0.5~1.0	1.0	0.5~1.0	1.5	1.0~1.5	2.0	1.5~2.0
	1.5	1.0~1.5	1.5	1.0~1.5	1.5	1.0~1.5	2.0	1.5~2.0	2.5	2.0~2.5
	2.0	1.5~2.0	2.0	1.5~2.0	2.0	1.5~2.0	2.5	2.0~2.5	3.0	2.5~3.0
	2.5	2.0~2.5	2.5	2.0~2.5	2.5	2.0~2.5	3.0	2.5~3.0	4.0	3.0~4.0
	3.0	2.5~3.0	3.0	2.5~3.0	3.0	2.5~3.0	4.0	3.0~4.0	5.0	4.0~5.0
	3.5	3.0~3.5	4.0	3.0~4.0	4.0	3.0~4.0	5.0	4.0~5.0	6.0	5.0~6.0
	4.0	3.5~4.0	5.0	4.0~5.0	5.0	4.0~5.0	6.0	5.0~6.0	7.0	6.0~7.0
	4.5	4.0~4.5	6.0	5.0~6.0	6.0	5.0~6.0	7.0	6.0~7.0	8.0	7.0~8.0
	5.0	4.5~5.0	7.0	6.0~7.0	7.0	6.0~7.0	8.0	7.0~8.0	9.0	8.0~9.0
	5.5	5.0~5.5	8.0	7.0~8.0	8.0	7.0~8.0	9.0	8.0~9.0	10.0	9.0~10.0
	6.0	5.5~6.0	9.0	8.0~9.0	9.0	8.0~9.0	10.0	9.0~10.0	11.0	10.0~11.0
	6.5	6.0~6.5	10.0	9.0~10.0	10.0	9.0~10.0	11.0	10.0~11.0	12.0	11.0~12.0
	7.0	6.5~7.0			11.0	10.0~11.0	12.0	11.0~12.0	13.0	12.0~13.0
					12.0	11.0~12.0	13.0	12.0~13.0	14.0	13.0~14.0
					13.0	12.0~13.0	14.0	13.0~14.0	15.0	14.0~15.0
						15.0	14.0~15.0	16.0	15.0~16.0	
						16.0	15.0~16.0	17.0	16.0~17.0	
								18.0	17.0~18.0	
								19.0	18.0~19.0	
								20.0	19.0~20.0	
φD	11		16		20		25		32	
L	18		27		31		35		40	

Collet for through the groove (produce by order) are also available.

### ORDERING EXAMPLE

① CR07 - ② 1.5 ③ AA

- ① Chuck Type
- ② φd
- ③ Grade

ACCESSORIES for COLLET CHUCK

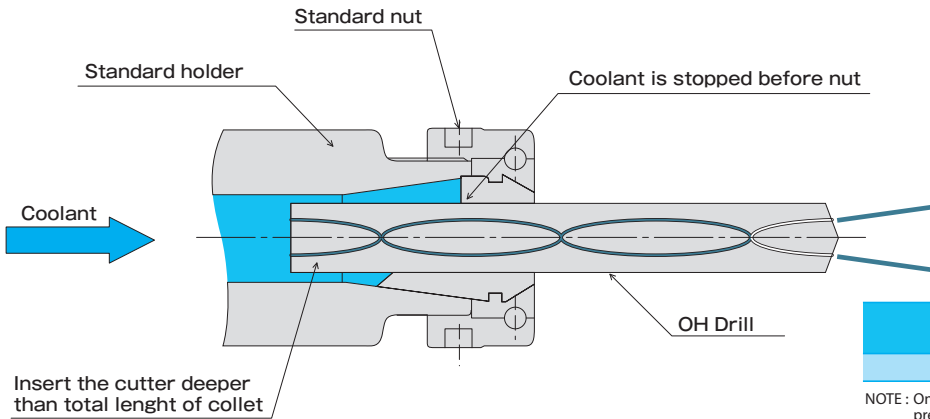


# OIL HOLE CR COLLET

CROH<sup>®</sup>-D

## FEATURES

- For thru-the-tool coolant application.
- High pressure up to 7 Mpa is acceptable.
- Standard holders and nuts can be used.
- Bearing of nut is not affected by coolant.



GRADE	RUNOUT (MAX. $\mu\text{m}$ ) 4 $\times$ d
(AA)	5 $\mu\text{m}$

NOTE : Only super precious grade (AA) is available for sale only ultra precision grade (AA) type.

COLLET CODE/CHUCK	RSC07 CROH07-d GRADE		RSC10 CROH10-d GRADE		RSC13 CROH13-d GRADE		RSC16 CROH16-d GRADE		RSC20 CROH20-d GRADE	
$\phi d$	$\phi d$	RANGE	$\phi d$	RANGE	$\phi d$	RANGE	$\phi d$	RANGE	$\phi d$	RANGE
	2.0	1.9~2.0	2.0	1.9~2.0	3.0	2.9~3.0	3.0	2.9~3.0	3.0	2.9~3.0
	2.5	2.4~2.5	2.5	2.4~2.5	3.5	3.4~3.5	3.5	3.4~3.5	3.5	3.4~3.5
	3.0	2.9~3.0	3.0	2.9~3.0	4.0	3.9~4.0	4.0	3.9~4.0	4.0	3.9~4.0
	4.0	3.9~4.0	4.0	3.9~4.0	4.5	4.4~4.5	4.5	4.4~4.5	4.5	4.4~4.5
	4.5	4.4~4.5	4.5	4.4~4.5	5.0	4.9~5.0	5.0	4.9~5.0	5.0	4.9~5.0
	5.0	4.9~5.0	5.0	4.9~5.0	5.5	5.0~5.5	5.5	5.4~5.5	5.5	5.4~5.5
	5.5	5.4~5.5	5.5	5.0~5.5	6.0	5.5~6.0	6.0	5.5~6.0	6.0	5.9~6.0
	6.0	5.9~6.0	6.0	5.5~6.0	6.5	6.0~6.5	6.5	6.0~6.5	6.5	6.4~6.5
	6.5	6.4~6.5	6.5	6.0~6.5	7.0	6.5~7.0	7.0	6.5~7.0	7.0	6.9~7.0
	7.0	6.9~7.0	7.0	6.5~7.0	7.5	7.0~7.5	7.5	7.0~7.5	7.5	7.4~7.5
			7.5	7.0~7.5	8.0	7.5~8.0	8.0	7.5~8.0	8.0	7.5~8.0
			8.0	7.5~8.0	8.5	8.0~8.5	8.5	8.0~8.5	8.5	8.0~8.5
			8.5	8.0~8.5	9.0	8.5~9.0	9.0	8.5~9.0	9.0	8.5~9.0
			9.0	8.5~9.0	9.5	9.0~9.5	9.5	9.0~9.5	9.5	9.0~9.5
			9.5	9.0~9.5	10.0	9.5~10.0	10.0	9.5~10.0	10.0	9.5~10.0
			10.0	9.5~10.0	10.5	10.0~10.5	10.5	10.0~10.5	10.5	10.0~10.5
					11.0	10.5~11.0	11.0	10.5~11.0	11.0	10.5~11.0
					11.5	11.0~11.5	11.5	11.0~11.5	11.5	11.0~11.5
					12.0	11.5~12.0	12.0	11.5~12.0	12.0	11.5~12.0
					12.5	12.0~12.5	12.5	12.0~12.5	12.5	12.0~12.5
					13.0	12.5~13.0	13.0	12.5~13.0	13.0	12.5~13.0
							13.5	13.0~13.5	13.5	13.0~13.5
							14.0	13.5~14.0	14.0	13.5~14.0
							14.5	14.0~14.5	14.5	14.0~14.5
							15.0	14.5~15.0	15.0	14.5~15.0
							15.5	15.0~15.5	15.5	15.0~15.5
							16.0	15.5~16.0	16.0	15.5~16.0
									16.5	16.0~16.5
									17.0	16.5~17.0
									17.5	17.0~17.5
									18.0	17.5~18.0
									18.5	18.0~18.5
									19.0	18.5~19.0
									19.5	19.0~19.5
									20.0	19.5~20.0
$\phi D$		11		16		20		25		32
L		18		27		31		35		40

- NOTE : 1. Applicable for drill with oil hole.  
 2. When in use insert a drill to the end from the rear of the collet.  
 3. Do not use smaller sized cutting tools than inner diameter of collet, or coolant may leak out of a collet.  
 4. If flat-face shank cutting tool is used, sealing function of collet does not work.

**ORDERING EXAMPLE**

① CROH10 - ② 10 ③ AA

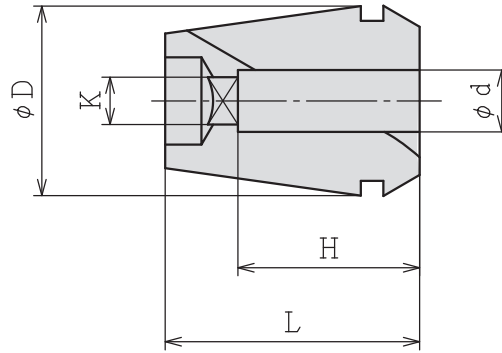
① Chuck Type  
 ②  $\phi d$   
 ③ Grade



# CR TAP COLLET

CR<sup>®</sup>GB-<sup>Ⓧ</sup>

CR collet with square hole for shank end of tap (for synchro tap).



MODEL	CODE	TAP SIZE	$\phi d$	K	H	$\phi D$	L	TAP HOLDER	COLLET CHUCK					
CR10GB	-M4	84700	M4	5	4	16	27	-	RSC10					
	-M5	84702	M5	5.5	4.5									
	-M6	84704	M6	6	4.5									
	-M8	84706	M8	6.2	5									
	-M10	84708	M10	7	5.5									
	-P1/8	84710	P1/8	8	6									
CR13GB	-M4	84712	M4	5	4	20	31	SYFN12	RSC13					
	-M5	84714	M5	5.5	4.5									
	-M6	84716	M6	6	4.5									
	-M8	84718	M8	6.2	5									
	-M10	84720	M10	7	5.5									
		-P1/8	84722	P1/8	8					6				
	-M12	84724	M12	8.5	6.5									
CR16GB	-M4	84726	M4	5	4	25	35	SYFN16S	RSC16					
	-M5	84728	M5	5.5	4.5									
	-M6	84730	M6	6	4.5									
	-M8	84732	M8	6.2	5									
	-M10	84734	M10	7	5.5									
		-P1/8	84736	P1/8	8					6				
		-M12	84738	M12	8.5					6.5				
		-M14	84740	M14	10.5					8				
		-P1/4	84742	P1/4	11					9				
	-M16	84744	M16	12.5	10									
	-P3/8	84746	P3/8	14	11									
CR20GB	-M4	84748	M4	5	4	32	40	SYFN20	RSC20					
	-M5	84750	M5	5.5	4.5									
	-M6	84752	M6	6	4.5									
	-M8	84754	M8	6.2	5									
	-M10	84756	M10	7	5.5									
		-P1/8	84758	P1/8	8					6				
		-M12	84760	M12	8.5					6.5				
		-M14	84762	M14	10.5					8				
		-P1/4	84764	P1/4	11					9				
		-M16	84766	M16	12.5					10				
		-P3/8	84768	P3/8	14					11				
		-M18	84770	M18	14					11				
		-M20	84772	M20	15					12				

NOTE : 1. Above table is for a tap of JIS standard shank.  
2. Run-out accuracy is subject to ordinary (STD) class.

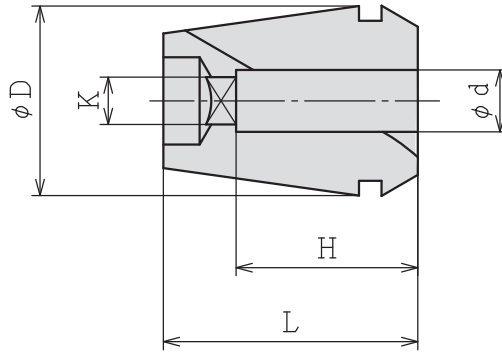
ACCESSORIES for COLLET CHUCK



# OIL HOLE CR TAP COLLET

CR<sup>10</sup>GH-<sup>⊕</sup>

OH-type collet with square hole is for high-pressure centre-through coolant feeding (for synchro tapping) .



MODEL	CODE	TAP SIZE	$\phi d$	K	H	$\phi D$	L	TAP HOLDER	COLLET CHUCK
CR10GH	-M6	84800	M6	6	4.5	16	27	-	RSC10
	-M8	84802	M8	6.2	5				
	-M10	84804	M10	7	5.5				
	-P1/8	84806	P1/8	8	6				
CR13GH	-M6	84808	M6	6	4.5	20	31	SYFN12	RSC13
	-M8	84810	M8	6.2	5				
	-M10	84812	M10	7	5.5				
	-P1/8	84814	P1/8	8	6				
CR16GH	-M6	84818	M6	6	4.5	25	35	SYFN16S	RSC16
	-M8	84820	M8	6.2	5				
	-M10	84822	M10	7	5.5				
	-P1/8	84824	P1/8	8	6				
	-M12	84826	M12	8.5	6.5				
	-M14	84828	M14	10.5	8				
	-P1/4	84830	P1/4	11	9				
CR20GH	-M6	84836	M6	6	4.5	32	40	SYFN20	RSC20
	-M8	84838	M8	6.2	5				
	-M10	84840	M10	7	5.5				
	-P1/8	84842	P1/8	8	6				
	-M12	84844	M12	8.5	6.5				
	-M14	84846	M14	10.5	8				
	-P1/4	84848	P1/4	11	9				
	-M16	84850	M16	12.5	10				
	-P3/8	84852	P3/8	14	11				
	-M18	84854	M18	14	11				
-M20	84856	M20	15	12					

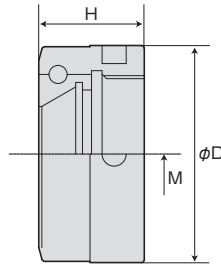
- NOTE :
1. Above table is for a tap of JIS standard shank.
  2. Run-out accuracy is subject to ordinary (STD) class.
  3. In the case of OSG Corporation synchro tap, shank diameter, square end dimensions are different from others so that there is the case that you can not use it even if tap size is the same.
  4. Gap-through collet is also available. Please order separately.

ACCESSORIES for COLLET CHUCK



# NUT FOR COLLET CHUCK

RSN (No.) - TYPE



for BT, ST

Through-Coolant use

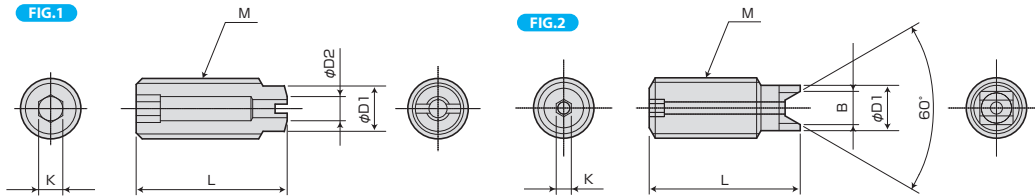
CODE	M	φD	H	CHUCK
RSN07NB (Ni) 30891	M16×1.0	24	11.5	RSC07
RSN10NB (Ni) 30892	M21×1.0	30	15.5	RSC10
RSN13NB (Ni) 30893	M26×1.0	36	17.5	RSC13
RSN16NB (Ni) 30894	M32×1.0	42	17.5	RSC16
RSN20NB (Ni) 30895	M40×1.0	50	17.5	RSC20

CODE	M	φD	H	CHUCK
RSN10NB-OH 30870	M21×1.0	30	15.5	RSC10
RSN13NB-OH 30871	M26×1.0	36		RSC13
RSN16NB-OH 30872	M32×1.0	42	17.5	RSC16
RSN20NB-OH 30873	M40×1.0	50		RSC20

Note: Single use of OH nut can not cope with the thru-the-tool coolant.



# ADJUST SCREW (For COLLET CHUCK)



MODEL	FIG	M	L	D1	D2	K	B	HOLDER
M6×20L-CTW 1)	1	M6×1.0	20	4.5	3	3	—	RSC07
RAS10-25-2.5 2)	2	M10×1.5	25	7.5	—	2.5	5.5	RSC10
RAS13-25-2.5 2)		M12×1.5		9.5			7.2	RSC13
RAS16-25-5 2)		M18×1.5		13.5			9.5	RSC16
RAS20-25-5 2)		M24×1.5		17.5			—	RSC20

Note 1: Drill less than φ3 cannot be used for adjustment protrusion in order to enter the coolant hole.

CTW is not in the two pieces shape

Note 2: Drill less than φ2 cannot be used for adjustment protrusion in order to enter the coolant hole.



# CHUCK WRENCH (For COLLET CHUCK)

CODE	CHUCK
FP25 35844	RSC07
FP30 35845	RSC10
FP35 35846	RSC13
FP42 35847	RSC16
FP50 35848	RSC20

ACCESSORIES for SYNCHRO TAP HOLDER



# COLLET CHUCK (SLIM TYPE)

FEATURES p. 14

ST<sup>⊙</sup>-SSC<sup>⊙</sup>MAX-L<sup>⊙</sup>

▶▶▶ Thru-the-tool Coolant Available

▶▶▶ Thru-the-groove Coolant Available

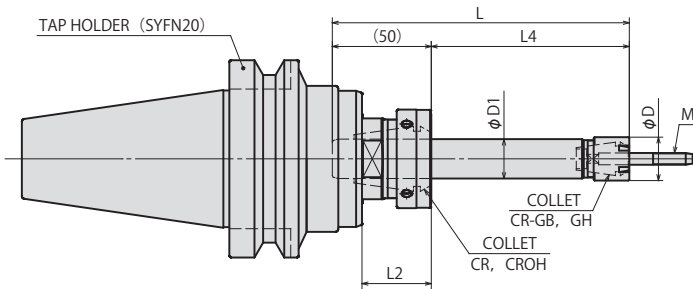


FIG.1

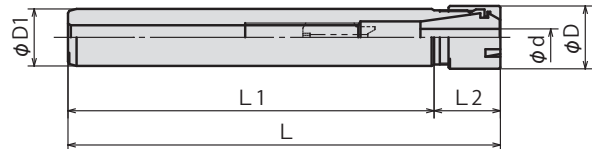
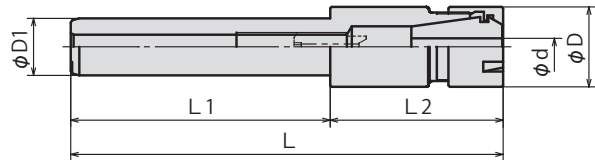


FIG.2



MODEL	CODE	FIG	φD	φD1	L	L1	L2	L3	L4	Suitable holder	Suitable collet	TAP SIZE	Collet for suitable collet	NUT
ST16	SSC07-100	30377	16	16	100	83	17	50 (min40)	50	SYFN20	CR20-16 CROH20-16	M2~M6, No.3~ U1/4	CR07-d CROH07-d	ER11MN
	SSC07-150	30378			150	133			100					
	SSC07-200	30379			200	183			150					
ST20	SSC10-100	30831	1	22	100	77	23	50 (min45)	50	SYFN20	CR20-20 CROH20-20	M4~M10, No.8~ U7/16	CR10GB CR10GH	ER16MN
	SSC10-150	30832			150	127			100					
	SSC10-200	30833			200	177			150					
	SSC10-250	30834			250	227			200					
	SSC13-150	30835	2	28	150	90	60	100	100			M4~M12, No.8~ U1/2,P1/8	CR13GB CR13GH	ER20MN
	SSC13-200	30836			200	140		150						

NOTE: 1. Collet and chuck wrench are sold separately.  
2. CROH collet is used for thru-the-tool coolant application.

ORDERING EXAMPLE			
①	②	③	④
BT30	- SYFN	12	- 105
① Shank Size	② Name	③ Type No	④ G.L. Length

ACCESSORIES **P.53-56** COLLETS

ACCESSORIES **P.57** NUT, CHUCK WRENCH

BT series

HSK series

ST series

Versatile Tool

Cutting Tool

Accessories