

Cutter shank diameter should be h6 or better.

MODEL	A	Fig	øD	L	H	øC	øC1	øC2	H1	H2	Min insert length	N/W (kg)								
BBT40	-HDU16-	120	○	2	16	120	112	62	38	82	14	54.5	57							
	-HDU20-	125	○		20	125	117				19	59.5	70							
BBT50	-HDU16-	105	○	1	16	105	112	62	38	-	14	54.5	57							
		135	△			135								14	54.5	57				
		165	△			165								14	54.5	57				
	-HDU20-	110	○		20	110	117				62	38	-	19	59.5	70				
		140	△			140												19	59.5	70
		170	△			170												19	59.5	70
	-HDU25-	115	○	25	115	128	70	44	-	27.5	66.5	85								
		145	△		145									27.5	66.5	85				
		175	△		175									27.5	66.5	85				
	-HDU32-	120	○	32	120	133	82	52	-	27.5	68.5	90								
		150	△		150									27.5	68.5	90				
		180	△		180									27.5	68.5	90				

- NOTE : 1. Please don't use with collets because it may destroy the inside of the holder.
 2. After 100 clamping cycles, or every 3month interval, please confirm clamping power of hydraulic portion.
 3. When you check clamping power of hydraulic portion, please use exclusive test bar (separately sold).

ACCESSORIES
 P.62 CHUCK WRENCH

ORDERING EXAMPLE

① BBT50 - ② HDU ③ 32 - ④ 120

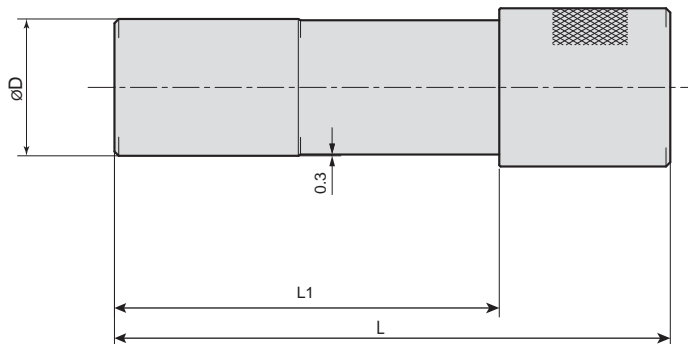
① Shank Size
 ② Holder's Name
 ③ Max. øD
 ④ G.L. Length

NOTE : Big Plus system (BBT) is a licensed of BIG DAISHOWA

ACCESSORIES for Hy-Dual CHUCK



Tester for clamping power



	MODEL	øD	L	L1
TB	HDU16	16	110	57
	HDU20	20	110	70
	HDU25	25	125	85
	HDU32	32	130	90

ORDERING EXAMPLE

① ②

TB - HDU16

① Holder's Name
② Chack Size



CHUCK WRENCH (For Hy-Dual CHUCK)

HOOK SPANNER		
CHUCK CODE	WRENCH CODE	
Hy-DUAL CHUCK		
HDU16,HDU20	FS58-62G	35853
HDU25	FS68-75G	35854
HDU32	FS80-90G	35855