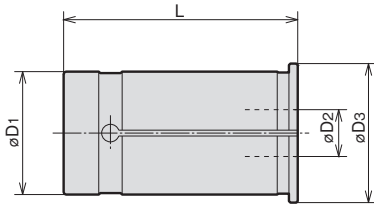


ACCESSORIES for HARD CHUCK



STRAIGHT COLLET

SC^①-^②D₂



CODE		øD3	L
SC ^① - ^② D ₂			
SC16	-6·8·10·12	20	47
SC20	-6·6.8·7·8·8.5·9·10·11·12·13·14·15·16	23.5	50
SC25	-6·6.8·7·8·8.5·9·10·11·12·13·14·15·16·17·18·19·20·21	30	60
SC32	-6·6.8·7·8·8.5·9·10·11·12·13·14·15·16·17·18·19·20·21·22·23·24·25	37.5	70
SC42	-6·6.8·7·8·8.5·9·10·11·12·13·14·15·16·17·18·19·20·21·22·23·24·25·32	47.5	80

ORDERING EXAMPLE

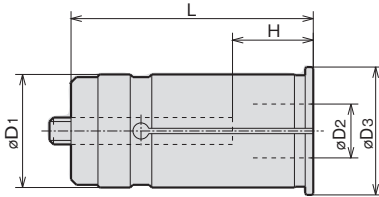
① SC ② 16 - ③ 6

- ① Name
- ② D1
- ③ D2



STRAIGHT COLLET WITH ADJUST SCREW

NC^①-^②D₂



CODE		øD3	L	H	
NC ^① - ^② D ₂				MIN.	MAX.
NC20	-6·8·10·12·16	23.5	60	25	35
	-6·8·10			20	45
NC32	-12·16·20·25	37.5	80	25	55
	-6·8·10·12			20	45
NC42	-16·20·25·32	47.5	90	30	65

Note:
* For all SHOWA chuck

ORDERING EXAMPLE

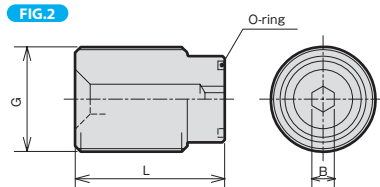
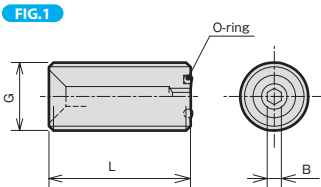
① NC ② 32 - ③ 6

- ① Name
- ② D1
- ③ D2



ADJUST SCREW (For HARD CHUCK, NEW MILLING CHUCK)

OR-M^①-^②L



ORDERING EXAMPLE

① OR ② M10 - ③ 25

- ① Name
- ② G
- ③ L

CODE	FIG.	G	L	B	O-ring
OR-M10(-25)	1	M10×1.5	25	2.5	S- 5
OR-M12(-25)		M12×1.5	25	2.5	S- 5
OR-M14(-35)		M14×1.5	35	4	P- 6
OR-M18(-25)		M18×1.5	25	5	P- 9
OR-M18(-35)		M18×1.5	35	5	P- 9
OR-M24 -25		M24×1.5	25	6	P- 9
OR-M24(-35)	2	M24×1.5	35	6	P- 9
OR-M28 -25		M28×1.5	25	6	P-16
OR-M28(-40)		M28×1.5	30	6	P-16
OR-M28(-30)		M28×1.5	40	6	P-16
OR-M36 -20		M36×1.5	20	6	P-21
OR-M36(-40)		M36×1.5	40	6	P-21