

▶▶▶ Thru-the-tool Coolant Available (Option)

▶▶▶ Thru-the-groove Coolant Available (Option)

▶▶▶ BBT Available



FIG.1

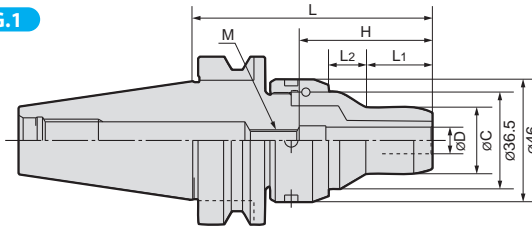
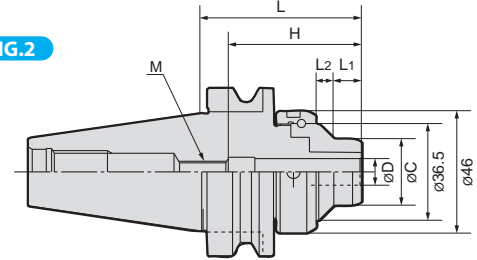


FIG.2



Note : When HPC03H, HPC04H and HPC05H is used through the groove coolant or through the tool coolant usage, please keep the coolant pressure within 1MPa and under. In case those 3 kinds of tools are used in through the tool coolant at over 1MPa pressure, it requires special adjustment according to its pressure, need additional cost, please contact Showa distributor.

Cuttershank diameters should be h7 or better.

MODEL	A	AA	GType	FIG	φD	L	L1	L2	φC	H	Min insert length	Adjust		Adjust screw M	ST	CT	N/W (Kg)								
												MIN	MAX												
Max. 20,000 min ⁻¹ (G Type:Max. 30,000 min ⁻¹)																									
BT30 (BBT30)	HPC03H	060	○	○	○	2	3	60	10.3	6.7	25	37.5	-	15	-	-	-	○	○ additional work	0.9					
		090	○	○	○	1	3	90	25	14								○	○ additional work	1.0					
	HPC04H	060	○	○	○	2	4	60	10.3	6.7								○	○ additional work	0.9					
		090	○	○	○	1	4	90	25	14								○	○ additional work	1.0					
	HPC05H	060	△	△	△	2	5	60	10.3	6.7								○	○ additional work	0.9					
		090	△	△	△	1	5	90	25	14								○	○ additional work	1.0					
	HPC06H	060	○	○	○	2	6	60	10.3	6.7								37	23	28	37	AS17-2-M5-CTW	○ at cost	○	0.9
		090	○	○	○	1	6	90	25	14													○ at cost	○	1.0
	HPC07H	060	△	△	△	2	7	60	10.3	6.7								50	23	28	37	AS17-2-M6-CTW	○ at cost	○	0.9
		090	△	△	△	1	7	90	25	14													○ at cost	○	1.0
	HPC08H	060	○	○	○	2	8	60	10.3	6.7								50	23	35	50	AS22-2-M6-CTW	○ at cost	○	0.9
		090	○	○	○	1	8	90	25	14													○ at cost	○	1.0
	HPC09H	060	△	△	△	2	9	60	10.3	6.7								50	23	35	50	AS22-2-M8-CTW	○ at cost	○	0.9
		090	△	△	△	1	9	90	25	14													○ at cost	○	1.0
	HPC10H	060	○	○	○	2	10	60	10.3	6.7								32	23	35	50	AS25-2-M10-CTW	○ at cost	○	0.9
		090	○	○	○	1	10	90	25	14													○ at cost	○	1.0
HPC11H	060	△	△	△	2	11	60	12.2	4.8	40	25	40	55	AS25-2-M10-CTW	○ at cost	○	0.9								
	090	△	△	△	1	11	90	25	14						○ at cost	○	1.0								
HPC12H	060	○	○	○	2	12	60	12.2	4.8	40	55	40	55	AS25-2-M10-CTW	○ at cost	○	0.9								
	090	○	○	○	1	12	90	25	14						○ at cost	○	1.0								
HPC13H	090	△	△	△	1	13	90	25	14	40	60	42	60	AS25-2-M10-CTW	○ at cost	○	1.0								
	090	△	△	△		14									60	42		60	○ at cost	○					
HPC14H	090	△	△	△	1	15	90	25	14	40	65	47	65	AS25-2-M10-CTW	○ at cost	○	1.0								
	090	△	△	△		15									65	47		65	○ at cost	○					
HPC15H	090	△	△	△	1	16	90	25	14	40	65	47	65	AS25-2-M10-CTW	○ at cost	○	1.0								
	090	△	△	△		16									65	47		65	○ at cost	○					

Max. 20,000 min ⁻¹ (G Type:Max. 30,000 min ⁻¹)																									
BT40 (BBT40)	HPC03H	060	○	○	○	2	3	60	10.3	6.7	25	15	15	-	-	-	-	○	○ additional work	1.4					
		090	○	○	○	1	3	90	25	14								○	○ additional work	1.5					
		120	○	○	○	1	3	120	25	14								○	○ additional work	1.7					
	HPC04H	060	○	○	○	2	4	60	10.3	6.7								37.5	23	28	37	AS17-2-M5-CTW	○ at cost	○	1.4
		090	○	○	○	1	4	90	25	14													○ at cost	○	1.5
		120	○	○	○	1	4	120	25	14													○ at cost	○	1.7
	HPC05H	090	△	△	△	1	5	90	25	14								50	23	35	50	AS22-2-M6-CTW	○ at cost	○	1.4
		120	△	△	△		5	120															○ at cost	○	1.5
		090	△	△	△		1	5															90	○ at cost	○
	HPC06H	060	○	○	○	2	6	60	10.3	6.7								37.5	30	30	37	AS17-2-M6-CTW	○ at cost	○	1.4
		090	○	○	○	1	6	90	○ at cost	○													1.5		
		120	○	○	○	1	6	120	○ at cost	○													1.7		
	HPC07H	090	△	△	△	1	7	90	25	14								50	35	35	50	AS22-2-M8-CTW	○ at cost	○	1.4
		120	△	△	△		7	120															○ at cost	○	1.5
		090	△	△	△		1	7															90	○ at cost	○
	HPC08H	060	○	○	○	2	8	60	10.3	6.7								50	23	35	50	AS22-2-M6-CTW	○ at cost	○	1.4
090		○	○	○	1	8	90	○ at cost	○	1.5															
120		○	○	○	1	8	120	○ at cost	○	1.7															
HPC09H	090	△	△	△	1	9	90	25	14	50	35	35	50	AS22-2-M8-CTW	○ at cost	○	1.4								
	120	△	△	△		9	120								○ at cost	○	1.5								
	090	△	△	△		1	9								90	○ at cost	○	1.5							

MODEL	A	AA	GType	FIG	φD	L	L1	L2	φC	H	Min insert length	Adjust		Adjust screw M	ST	CT	N/W (Kg)							
												MIN	MAX											
Max. 20,000 min⁻¹(G Type:Max. 30,000 min⁻¹)																								
BT40 (BBT40)	HPC10H	060	○	○	○	10	60	10.3	6.7	25	50	23	35	50	AS22-2-M8-CTW	○ at cost	○	1.4						
		090	○	○	○		90	25	14			35				○ at cost	○	1.5						
		120	○	○	○		120					40				○ at cost	○	1.7						
	HPC11H	090	△	△	△	11	90	12.2	4.8	32	55	25	40	55	AS25-2-M10-CTW	○ at cost	○	1.5						
		120	△	△	△		120					40				○ at cost	○	1.7						
	HPC12H	060	○	○	○	12	60	25	14	32	55	25	40	55	AS25-2-M10-CTW	○ at cost	○	1.4						
		090	○	○	○		90					40				○ at cost	○	1.5						
	HPC13H	090	△	△	△	1	90	25	14	32	60	40	42	60	AS25-2-M10-CTW	○ at cost	○	1.6						
		120	△	△	△											120	42		○ at cost	○				
		090	△	△	△											13	60		40	42	60	AS25-2-M10-CTW	○ at cost	○
140		△	△	△	14																		42	○ at cost
HPC14H		090	△	△	△											14	60		40	42	60	AS25-2-M10-CTW	○ at cost	○
HPC15H		090	△	△	△																		15	42
HPC16H	090	△	△	△	16	42	○ at cost	○																

Max. 12,000 min⁻¹																					
BT50 (BBT50)	HPC03H	105	○	○	—	3	105	25	14	25	15	15	-	-	-	-	-	4.0			
		150	○	○	—		150												○	○	additional work
	HPC04H	105	○	○	—	4	105	25	14	25	15	15	-	-	-	-	-	4.0			
		150	○	○	—		150												○	○	additional work
	HPC05H	105	△	△	—	5	105	25	14	25	15	15	-	-	-	-	-	4.0			
	HPC06H	105	○	○	—	6	150												AS17-2-M5-CTW	○ at cost	○
	HPC07H	105	△	△	—	7	105	25	14	25	15	15	-	-	-	-	-	4.0			
	HPC08H	105	○	○	—	8	150												AS17-2-M6-CTW	○ at cost	○
	HPC09H	105	△	△	—	9	105	25	14	25	15	15	-	-	-	-	-	4.0			
		HPC10H	105	○	○		—												10	150	AS22-2-M6-CTW
	HPC11H	105	△	△	—	11	105	25	14	25	15	15	-	-	-	-	-	4.0			
		HPC12H	105	○	○		—												12	150	AS22-2-M8-CTW
	HPC13H	105	△	△	—	1	105	25	14	32	60	40	42	60	AS25-2-M10-CTW	○ at cost	○	4.0			
		150	○	○	—											13	150		AS25-2-M10-CTW	○ at cost	○
		105	△	△	—											14	105		AS25-2-M10-CTW	○ at cost	○
		150	○	○	—											15	150		AS25-2-M10-CTW	○ at cost	○
HPC14H	105	△	△	—	16	105	25	14	32	60	40	42	60	AS25-2-M10-CTW	○ at cost	○	4.0				
HPC15H	105	△	△	—	15	105									AS25-2-M10-CTW	○ at cost		○			
HPC16H	105	△	△	—	16	105	25	14	32	60	40	42	60	AS25-2-M10-CTW	○ at cost	○	4.0				
HPC16H	105	△	△	—	16	105									AS25-2-M10-CTW	○ at cost		○			

△ : Mark tools are manufactured to order.

- NOTE : 1. Chuck wrench and adjust screw are sold separately.
 2. When the thru-the-coolant application is needed for HPC03H, HPC04, or HPC05, please instruct when ordering. "CT" will be marked for this application.
 3. The thru-the-groove-coolant application for HPC06 or larger will be charged. Please instruct when ordering. "ST" will be marked for this application.
 4. The above-mentioned maximum speed will vary depending rigidity of the machine and balance of cutter.
 An adequate cutting condition should be selected for each case.
 5. Please feel free to ask us when need BBT shanks.

ORDERING EXAMPLE

① BT30 ② HPC ③ 03 ④ H ⑤ 060 ⑥ A

- ① Shank Size
- ② Holder's Name
- ③ Cutter's Shank Dia.
- ④ H series
- ⑤ G.L. Length
- ⑥ Grade

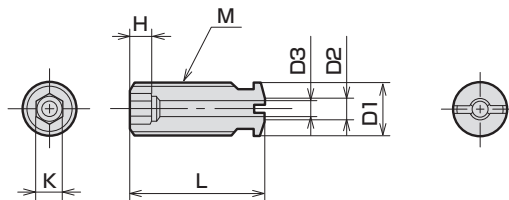
ACCESSORIES **P.42** ADJUST SCREW

ACCESSORIES **P.44** CHUCK WRENCH

ACCESSORIES for MICRON CHUCK H series M series



ADJUST SCREW for MICRON CHUCK H series, M series



MODEL	CODE	M	L	D1	D2	D3	K	H	MICRON CHUCK
AS17-2-M5-CTW	17672	M5×0.8	17	5	3	2	2.5	3	HPC06H
AS17-2-M6-CTW	17676	M6×1.0	17	6			3		HPC07H
AS22-2-M6-CTW	17678		22	8	5	4	HPC08H, HPC08M		
AS22-2-M8-CTW	17680	M8×1.25	25	8	5	4	4	5	HPC09H, HPC10H
AS25-2-M8-CTW	17682			10					6
AS25-2-M10-CTW	17684	M10×1.5	25	10	6	5	5	6	HPC11H~16H

BT series
 HSK series
 ST series
 Versatile Tool
 Cutting Tool
 Accessories

ACCESSORIES for MICRON CHUCK H series M series



CHUCK WRENCH (For MICRON CHUCK H series, M series and N series)

HOOK PIN SPANNER		
CHUCK CODE	WRENCH CODE	
MICRON CHUCK		
HPC03H~HPC16H HPC03M~HPC12M HPC03N~HPC12N	FP45-48G	35851