



FIG.1

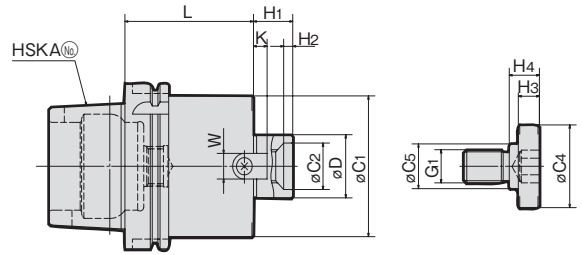


FIG.2

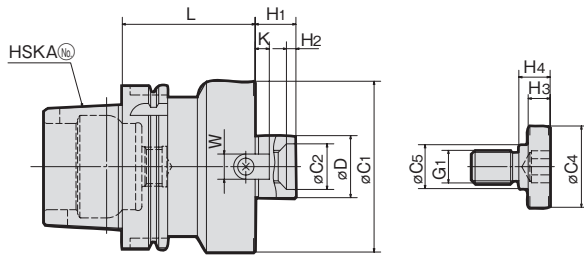
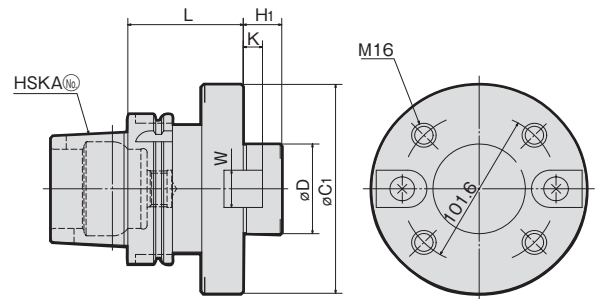


FIG.3



MODEL	CODE	FIG.	øD(h6)	L	øC1	øC2	H1	H2	KEY			CLAMP BOLT				N/W (kg)	
									W	K	G1	øC4	øC5	H3	H4		
HSKA50	-FMA22.225-045	300570	1	22.225	45	40	—	18	—	8.0	4	M8	20	15	7	9	0.6
	-FMA25.4-060	300572	2	25.4	60	50	—	22	—	9.5	5	M12	33	23	10	12	0.8
HSKA63	-FMA25.4-060	320660	1	25.4	60	50	—	22	—	9.5	5	M12	33	23	10	12	1.2
	-FMA31.75-060	320662	2	31.75		60	24	30	6	12.7	7	M16	40	23		16	1.4
	-FMA38.1-060	320664		38.1		80	28	34		15.9	9	M20	50	27	14	20	1.8
HSKA100	-FMA25.4-060	350660	1	25.4	60	50	—	22	—	9.5	5	M12	33	23	10	12	2.5
	-FMA31.75-060	350662		60		24	30	6	12.7	7	M16	40	23	16		2.8	
	-FMA38.1-060	350664		80		28	34		15.9	9	M20	50	27	14	20	3.4	
	-FMA50.8-075	350666	2	50.8	75	100	38	36	10	19.05	10	M24	65	37	14	24	4.9
	-FMA47.625-075	350668	3	47.625		128.6	—	38	—	25.4	12.5	—	—	—		—	—

注：1.クーラントパイプは付属されております。(固定式)  
NOTE: 1. Coolant pipe is included.

ご注文例 ORDERING EXAMPLE

① HSKA63 ② FMA ③ 25.4 ④ 060

① シャンクサイズ Shank Size  
② 呼称 Name  
③ インロー径 øD øD  
④ GL長さ L G.L. Length

# 正面フライスアーバB型

HSKA<sup>®</sup>No.-FMB<sup>®</sup>D-L

FACE MILL ARBOR (Type B)

▶▶ センタースルー対応(オプション) Thru-the-tool Coolant Available (Option)



FIG.1

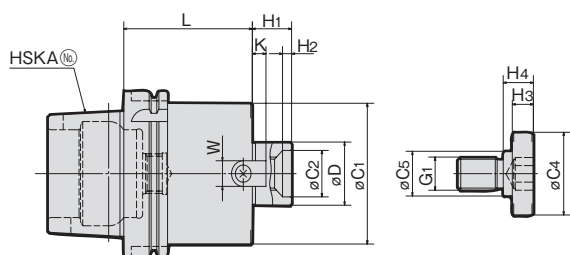


FIG.2

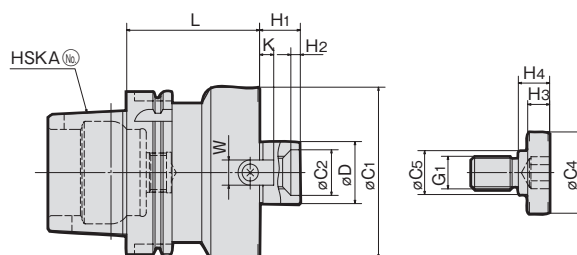


FIG.3

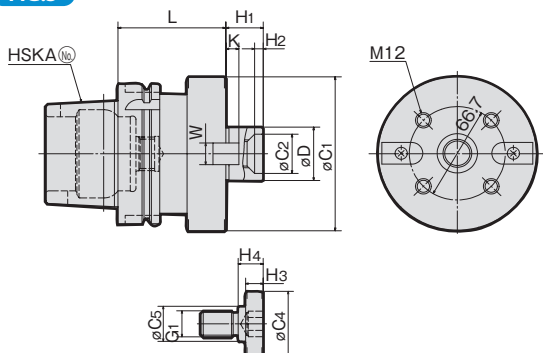
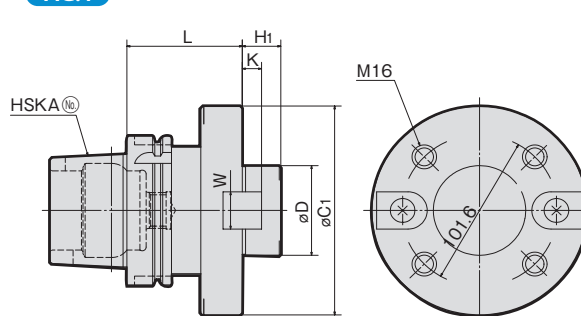


FIG.4



MODEL	CODE	FIG.	øD(h6)	L	øC1	øC2	H1	H2	KEY		G1	CLAMP BOLT				N/W (kg)
									W	K		øC4	øC5	H3	H4	
HSKA63	-FMB25.4 -060	320670	25.4	60	80	—	26	—	9.5	5	M12	33	23	10	12	1.7
	-FMB38.1 -060	320672	38.1		85	28		6	15.9	9	M20	50	27	14	20	1.8
	-FMB27 -060	320674	27		80	—		—	12	6	M12	33	23	10	12	1.7
	-FMB40 -060	320676	40		85	28		6	16	8.5	M20	50	27	14	20	1.8
HSKA100	-FMB25.4 -060	350680	25.4	60	80	—	26	—	9.5	5	M12	33	23	10	12	2.9
	-FMB38.1 -060	350682	38.1	85	28	6		15.9	9	M20	50	27	14	20	3.5	
	-FMB38.1F-075	350684		75		110		—	—	—	—	—	—	—	—	4.8
	-FMB27 -060	350686	27	80	—	—		12	6	M12	33	23	10	12	2.9	
	-FMB40 -060	350688	40	85	28	6		16	8.5	M20	50	27	14	20	3.5	
	-FMB40F -075	350690		3		110		—	—	—	—	—	—	—	—	4.8
	-FMB60 -075	350692	4	60	140	—		25	—	25.4	12.5	—	—	—	—	6.8

注：1. クーラントパイプは付属されております。(固定式)  
2. サンドビッグセコカッタ用

NOTE: 1. Coolant pipe is included.  
2. For Sandvik and Seco cutters.

ご注文例 ORDERING EXAMPLE

① HSKA63 - ② FMB ③ 38.1 - ④ 060

① シャンクサイズ Shank Size  
② 呼称 Name  
③ インロー径 øD øD  
④ GL長さ L G.L. Length

BT series

HSK series

ST series

Versatile Tool

Cutting Tool

Accessories

Data



FIG.1

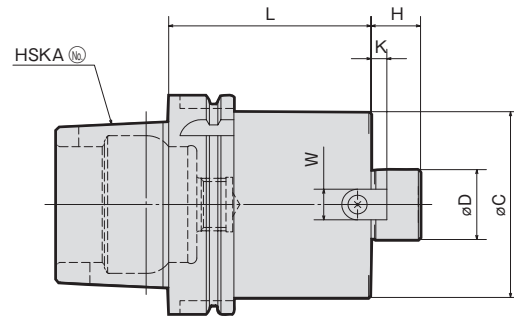
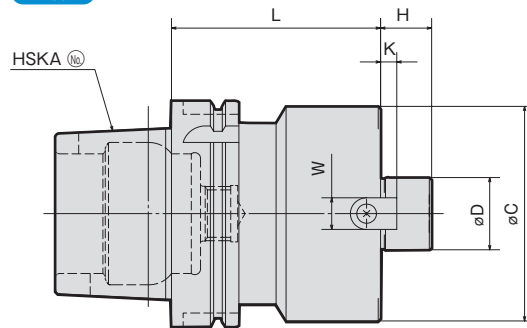


FIG.2



MODEL	CODE	FIG.	øD(hø)	L	øC	H	KEY		CLAMP BOLT	N/W (kg)	
							W	K			
HSKA50	-FMC22 -060	300137	22	60	45	18	10	5	M10 × 30L	0.9	
	-FMC37 -060	300138	27		70	20	12	6	M12 × 35L	1.3	
HSKA63	-FMC25.4-060	320680	25.4	60	70	20	9.5	5	M12 × 35L	1.5	
	-FMC38.1-060	320682	38.1		85	22	15.9	7	M16 × 40L	0.8	
	-FMC22 -060	320684	1		22	45	18	10	5	M10 × 30L	1.1
	-FMC27 -060	320686	2		27	70	20	12	6	M12 × 35L	1.5
	-FMC32 -060				32	85	22	14	7	M16 × 40L	1.8
	-FMC25.4-060				25.4	70	20	9.5	5	M12 × 35L	2.9
HSKA100	-FMC38.1-060		38.1	60	85	22	15.9	7	M16 × 40L	3.5	
	-FMC22 -060	350704	1		22	45	18	10	5	M10 × 30L	2.4
	-FMC27 -060				27	70	20	12	6	M12 × 35L	3.0
	-FMC32 -060				32	85	22	14	7	M16 × 40L	3.4

注：1. クーラントパイプは付属されております。(固定式)  
2. サンドビグ、セコカッタ用

NOTE: 1. Coolant pipe is included.  
2. For Sandvik and Seco cutters.

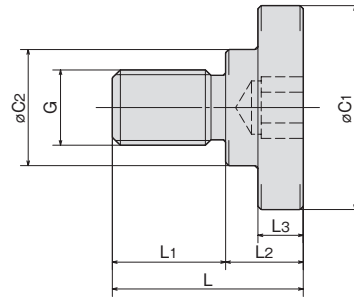
ご注文例 ORDERING EXAMPLE

①	②	③	④
HSKA63	- FMC	22	- 060
① シャンクサイズ	Shank Size		
② 呼称	Name		
③ インロー径 øD	øD		
④ GL長さ L	G.L. Length		



## 正面フライスアーバ用クランプボルト

CLAMP BOLT FOR FACE MILL ARBOR



HSK series

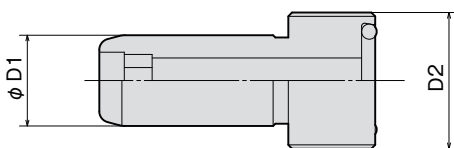
MODEL	CODE	$\phi C1$	$\phi C2$	L	L1	L2	L3	G	ARBOR CODE
MBA - M 8	49771	20	15	23	14	9	7	M 8×P1.25	FMA22.225 SMA16
MBA - M10	49772	28	18	27	16	11	9	M10×P1.5	SMA22 SMB22.225
MBA - M12	49773	33	23	30	18	12	10	M12×P1.75	FMA,B25.4 FMB27 SMA27
MBA - M16	49774	40	23	40	24	16	10	M16×P2.0	FMA31.75 SMA32 SMB31.75
MBA - M20	49775	50	27	50	30	20	14	M20×P2.5	FMA,B38.1 FMB40 SMA40 SMB38.1
MBA - M24	49776	65	37	59	35	24	14	M24×P3.0	FMA50.8



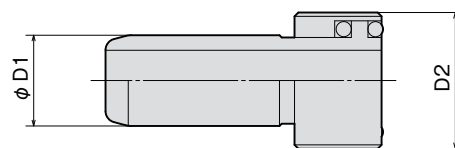
## <HSK シャンク>クーラントパイプ

<HSK SHANK> COOLANT PIPE

固定式 (Fixed Type)



可動式 (Movable Type)



●固定式 (Fixed type)

MODEL	CODE	HSK No.	D1	D2
CLP-032	25180	HSK32	6	M10×1.0
CLP-040	25181	HSK40	8	M12×1.0
CLP-050	25182	HSK50	10	M16×1.0
CLP-063	25183	HSK63	12	M18×1.0
CLP-080	25184	HSK80	14	M20×1.5
CLP-100	25185	HSK100	16	M24×1.5

●可動式 (Movable type)

MODEL	CODE	HSK No.	D1	D2
CLPF-040	25191	HSK40	8	M12×1.0
CLPF-050	25192	HSK50	10	M16×1.0
CLPF-063	25193	HSK63	12	M18×1.0
CLPF-100	25195	HSK100	16	M24×1.5

注1: 固定式・可動式を選択には機械メーカー殿にご確認ください。

NOTE 1: Please confirm it to the machine maker in choice of fixed type or movable type.

ご注文例 ORDERING EXAMPLE

① CLP - ② 032

① 呼称 Name  
② HSK No. HSK No.