

正面フライスアーバA型

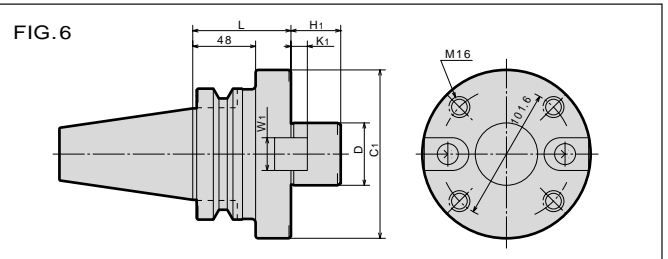
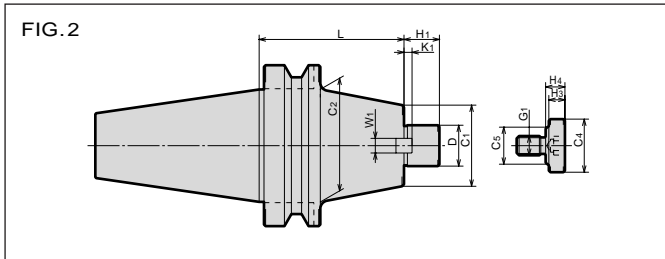
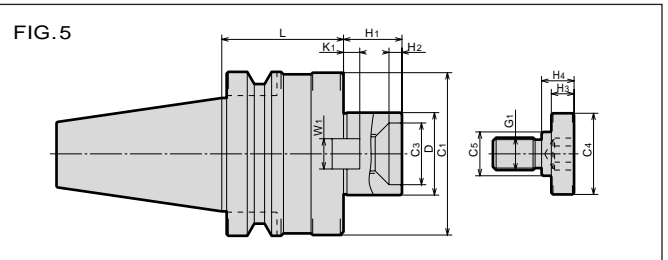
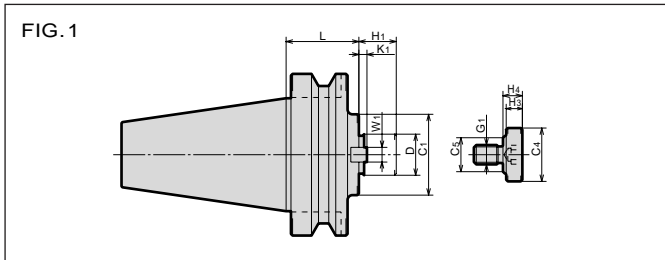
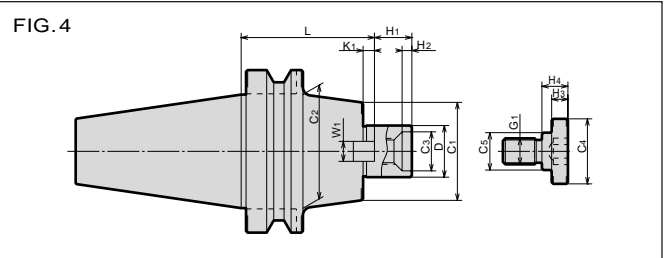
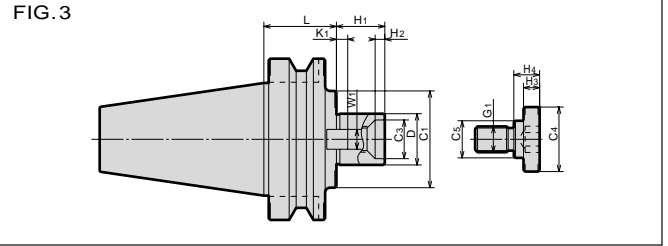
FACE MILL ARBOR (Type A)

BT (No.) - FMA (D) - (L)

SHOWA TOOL CO., LTD.

BT series
BTシリーズ

www.showatool.com



CODE	FIG.	D(h6)	L	C1	C2	C3	H1	H2	KEY		G1	CLAMP BOLT				N/W (kg)	PRICE (Yen)	
									W1	K1		C4	C5	H3	H4			
BT30	-FMA22.225-035 10010	1	22.225	35	40			18		8.0	4	M8	20	15	7	9	0.57	17,300
	-FMA25.4-035 10012	1	25.4	35	50			22		9.5	5	M12	33	23	10	12	0.72	
BT40	-FMA25.4-045 11002	1	25.4	45	50			22		9.5	5	M12	33	23	10	12	1.4	17,300
	-105 11006	2		105													2.6	19,000
	-FMA31.75-045 11008	3	31.75	45	60		24	30	6	12.7	7	M16	40	23	10	15	1.6	17,300
	-090 11010			90												16	2.6	19,000
-FMA38.1-060 11014	3	38.1	60	80		28	34	6	15.9	9	M20	50	27	14	20	2.6	21,300	
BT50	-FMA25.4-045 13002	1	25.4	45	50	70				9.5	5	M12	33	23	10	12	3.9	26,500
	-090 13004	2		90													5.0	29,900
	-150 13006	2		150													6.4	32,200
	-FMA31.75-045 13008	3	31.75	45	60	70	24	30	6	12.7	7	M16	40	23	10	16	4.1	26,500
	-075 13010	4		75													4.9	28,800
	-105 13012	4	105	5.7	32,200													
	-FMA38.1-045 13014	3	38.1	45	80		28	34	6	15.9	9	M20	50	27	14	20	4.4	26,500
	-075 13016	3		75													5.6	28,800
	-FMA50.8-045 13020	3	50.8	45	98		38	36	10	19.05	10	M24	65	37	14	24	5.0	26,500
	-075 13022	5		75													100	6.7
-FMA47.625-075 13024	6	47.625	75	128.57			38		25.4	12.5						8.0	35,700	

BT30-FMA 25.4-035 ご注文例 Ordering Example

GL長さ L G.L. Length
 インロー径 φD Name
 呼称 Name
 シャンクサイズ Shank Size